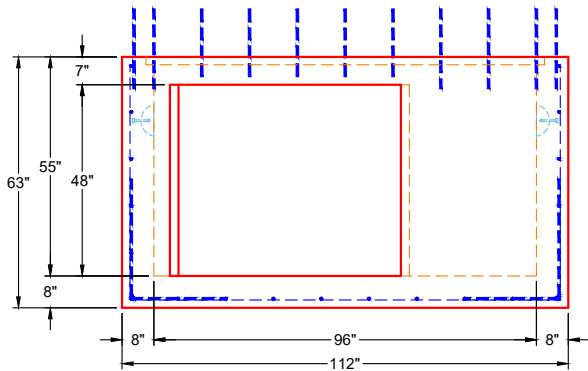
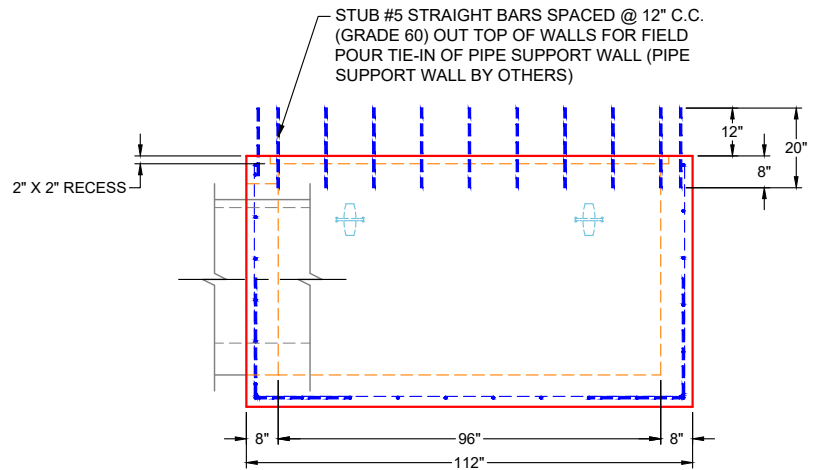


PLAN VIEW



FRONT VIEW



SIDE VIEW

GENERAL NOTES:

1. PER ASTM C-913 SPECIFICATIONS
2. CONCRETE: 5,000 PSI AT 28 DAYS
3. REINFORCEMENT: #5 BAR @ 12" C.C. E.W. (GRADE 60)
4. WEIGHT: 21,980 LBS
5. GRATE TO BE SUPPLIED BY OTHERS
6. 2" X 2" RECESS REQUIRED AROUND INNER TOP SIDE OF WALLS FOR GRATE TO RECESS INTO
7. STUB #5 STRAIGHT BAR SPACED @ 12" C.C. (GRADE 60) OUT TOP OF WALLS FOR FIELD POUR TIE-IN OF PIPE SUPPORT WALL (PIPE SUPPORT WALL BY OTHERS)
8. INTERIOR SUPPORT FOR FRP GRATE TO BE SUPPLIED BY OTHERS

REVISION INFORMATION

REV. DATE:	NO REVISIONS TO DATE



SUBMITTAL DRAWING: 96" X 96" VAULT		
CUSTOMER: MAC CONSTRUCTION & EXCAVATING, INC.		
PROJECT: 860 PZ LANDIS RIDGE 3 MG TANK		
STRUCTURE: OVERFLOW VAULT		
QUOTE/SALES ORDER NO: 25-1718		
CHECKED BY: B. SMITH	DRAWN BY: K. CARDWELL	
DATE: 01/19/26	SCALE: NTS	PG. 1 OF 1