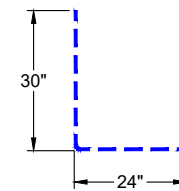


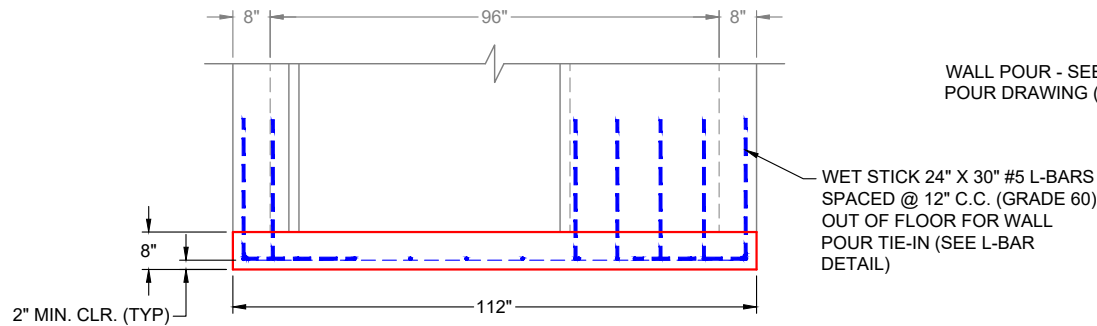
**PLAN VIEW  
(RIGHT SIDE UP)**

**GENERAL NOTES:**

1. PER TO ASTM C-913 (LATEST REVISION) SPECIFICATIONS
2. CONCRETE: 5,000 PSI AT 28 DAYS
3. REINFORCEMENT: #5 BAR @ 12" C.C. E.W. (GRADE 60) - 2" MIN. REBAR CLEARANCE (TYP)
4. TOTAL WEIGHT: 21,980 LBS  
 - FIRST POUR (FLOOR): 8,421 LBS  
 - SECOND POUR (WALLS): 13,559 LBS
5. PRODUCTION TO WET STICK 24" X 30" #5 L-BARS SPACED @ 12" C.C. (GRADE 60) OUT OF FLOOR FOR WALL POUR TIE-IN (SEE L-BAR DETAIL)
6. SEE PG. 2 OF 2 FOR WALL POUR (SECOND POUR)



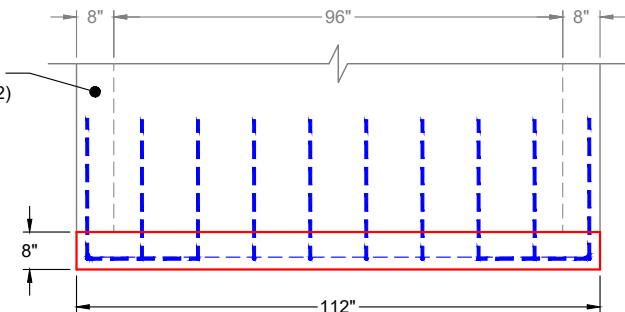
**#5 L-BAR  
33 EA. REQUIRED**



**FRONT VIEW  
(RIGHT SIDE UP)**

WALL POUR - SEE SECOND POUR DRAWING (PG. 2 OF 2)

WET STICK 24" X 30" #5 L-BARS SPACED @ 12" C.C. (GRADE 60) OUT OF FLOOR FOR WALL POUR TIE-IN (SEE L-BAR DETAIL)



**SIDE VIEW  
(RIGHT SIDE UP)**

**PRODUCTION WORK ORDER**

PRODUCT I.D.: BX9696-08BA-VH

DESCRIPTION: 112" X 112" X 8" THICK VAULT BASE FLOOR (FIRST POUR)



**QUALITY CONTROL CHECKLIST**

- ALL DIMENSIONS CORRECT.
- LIFTERS INSTALLED.
- CORRECT THICKNESS.
- REINFORCING CORRECT.
- #5 L-BAR STUBS CORRECT.
- BASE MAT CORRECT.
- PRODUCT SQUARE.

PRODUCT VIEW: RIGHT SIDE UP

CUSTOMER: MAC CONSTRUCTION & EXCAVATING, INC.

PLANT: BEAVER DAM, KY

PROJECT: 860 PZ LANDIS RIDGE 3 MG TANK

WEIGHT: 8,421 LBS (21,980 LBS TOTAL)

STRUCTURE: OVERFLOW VAULT

TOP SECTION JOINT: N / A

ORDER NO: 25-1718

BASE SECTION JOINT: N / A

PE: J.H. ROSS

DRAWING: K. CARDWELL

QC CHECK INITIALS:

DATE: 01/19/26

SCALE: NTS

PG. 1 OF 2

