

Job Name: 25-1718 - 860 PZ Landis Ridge 3 MG Tank  
 Job Location: Louisville, KY  
 Contractor: Mac Construction & Excavating, Inc.

Plant: 100

2/4/2026 6:24:14 AM

Tech: J. Horsley

PC: J. Jarvis



**Structure ID: OCS**

**P1 BX6060-08BAVF**

**BOX BASE 8inW, 8inF, Variable Ht F/n**

- P2) 60" x 60" - CASTING HEIGHT - 0"
- P1) 60" x 60" - BOX BASE 8inW, 8inF, Variable Ht F/n - 46"
- 1) SECONDARY POUR
- 1) 60" x 60" - Conseal CS-102 1.00"
- 1) Hole - 20
- 2) Hole - 8
- 1) Weir n/n - 48"x12"

0 lb  
 11612 lb  
 0 lb  
 0 lb  
 0 lb  
 0 lb  
 0 lb  
 -----  
 0 lb  
 Structure Total: 11612 lb

- Structure Notes:**
1. PER ASTM C-913 SPECIFICATIONS
  2. CONCRETE: 4,500 PSI AT 28 DAYS
  3. REINFORCEMENT: #5 BAR @ 8" C.C. E.W. (GRADE 60) - 2" MIN. REBAR CLEARANCE (TYP)
  4. NO STORM INVERT
  5. NO STEPS
  6. TRASHRACK LFS-6060 SQUARE FLUSH MOUNT GRATE SUPPLIED BY OTHERS
  7. WET STICK 24" X 24" #5 L-BARS SPACED @ 12" C.C. (GRADE 60) OUT OF FLOOR FOR WALL POUR TIE-IN (SEE L-BAR DETAIL)

**FIRST POUR (FLOOR): 3,877 LBS**

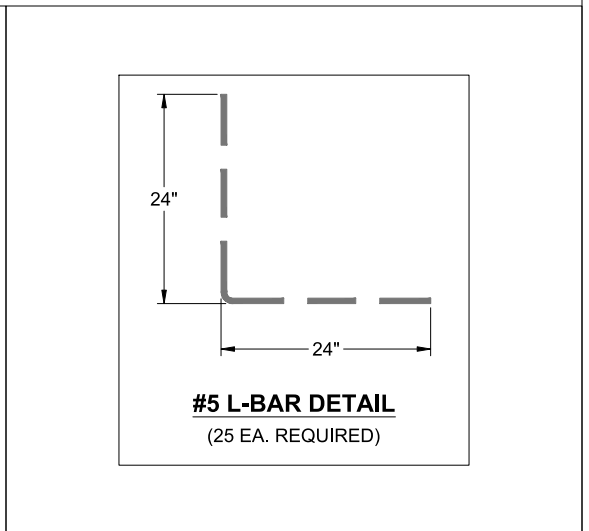
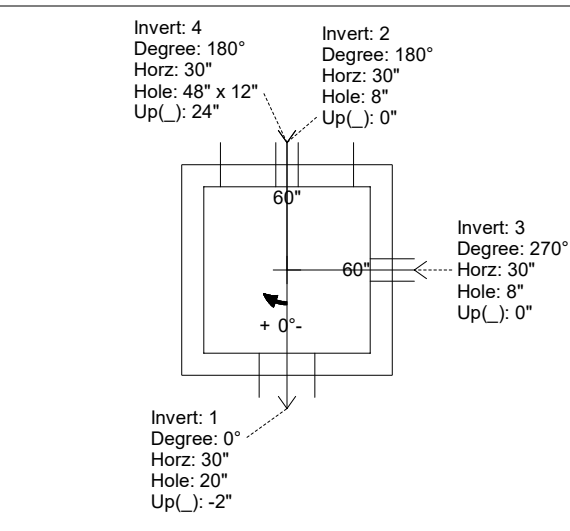
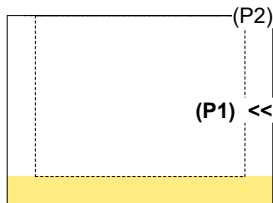
**SECOND POUR (WALLS): 7,735 LBS**

Rim: 750.85' Rim to Invert: 3.85' Slack: 0.2" Sump: 0" Step Position:

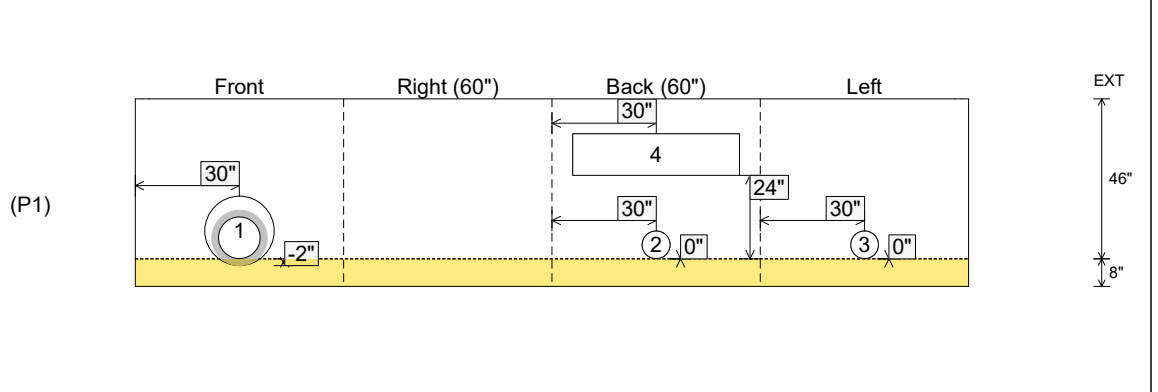
Position	Elev	Angle	Ext. (cw)	Pipe	Pipe OD	Connector	Hole	Horz Size	Up ( )	Offset
Invert 1	747'	0°	38"	12" RCP B WALL	16"	Hole 20	20"	20"	-2"	0"
Invert 2	747'	180°	38"	8" Orifice	8"	Hole 8	8"	8"	0"	0"
Invert 3	747'	270°	38"	8" Orifice	8"	Hole 8	8"	8"	0"	0"
Invert 4	749'	180°	38"	48" x 12" Weir	48" x 12"	Weir 48"x12"	48" x 12"	48"	24"	0"
Invert 5										
Invert 6										
Invert 7										
Invert 8										

RIGHT-SIDE UP VIEW (int. dimensions)

UPSIDE-DOWN VIEW (int. dimensions)



INSIDE WALL DIMENSIONS



Coating (Int):  
 Coating (Ext):

Seam Up: Flat  
 Seam Dn: n/a

Wall Thickness: 8"  
 Floor Height: 8"

Height (Int): 46"  
 Height (Ext): 54"

Weight (Net): 11612 lb  
 Volume (Net): 2.97cu.yd

Job Name: 25-1718 - 860 PZ Landis Ridge 3 MG Tank  
 Job Location: Louisville, KY  
 Contractor: Mac Construction & Excavating, Inc.

Plant: 100

Tech: J. Horsley

2/4/2026 6:24:14 AM

PC: J. Jarvis



**Structure ID: OCS**

**P1 BX6060-08BAVF**

**BOX BASE 8inW, 8inF, Variable Ht F/n**

- P2) 60" x 60" - CASTING HEIGHT - 0"  
 P1) 60" x 60" - BOX BASE 8inW, 8inF, Variable Ht F/n - 46"  
 1) SECONDARY POUR  
 1) 60" x 60" - Conseal CS-102 1.00"  
 1) Hole - 20  
 2) Hole - 8  
 1) Weir n/n - 48"x12"

0 lb  
 11612 lb  
 0 lb  
 0 lb  
 0 lb  
 0 lb  
 0 lb  
 -----  
 0 lb  
 Structure Total: 11612 lb

- Structure Notes:**  
 1. PER ASTM C-913 SPECIFICATIONS  
 2. CONCRETE: 4,500 PSI AT 28 DAYS  
 3. REINFORCEMENT: #5 BAR @ 8" C.C. E.W. (GRADE 60) - 2" MIN. REBAR CLEARANCE (TYP)  
 4. NO STORM INVERT  
 5. NO STEPS  
 6. TRASHRACK LFS-6060 SQUARE FLUSH MOUNT GRATE SUPPLIED BY OTHERS  
 7. LIFTERS: 4 EA. 5CA14 CONAC A-ANCHORS FOR PLANT & FIELD HANDLING - INSTALLED IN 90° & 270° WALLS, MIN. 16" FROM TOP OF WALLS

**FIRST POUR (FLOOR): 3,877 LBS**

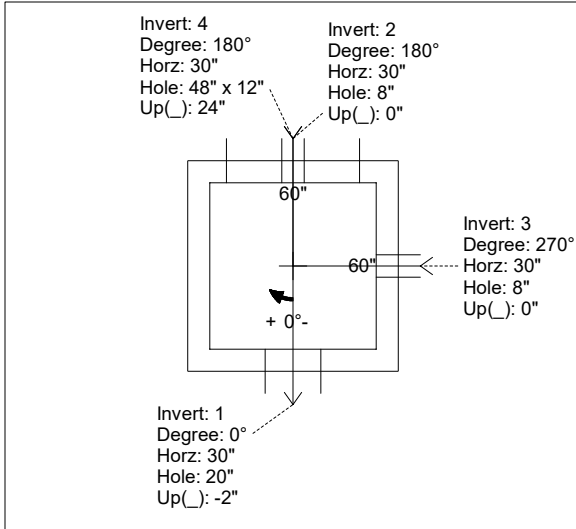
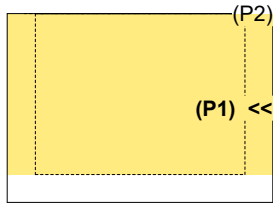
**SECOND POUR (WALLS): 7,735 LBS**

Rim: 750.85' Rim to Invert: 3.85' Slack: 0.2" Sump: 0" Step Position:

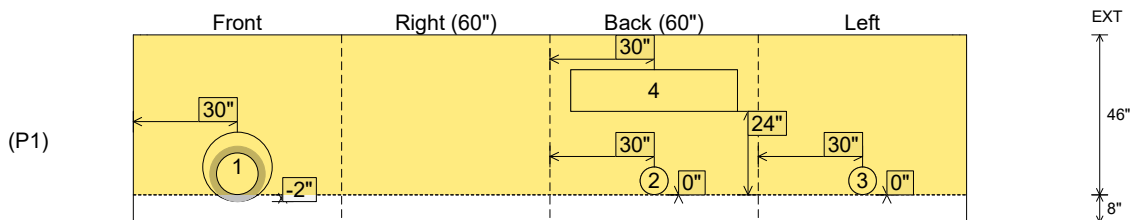
Position	Elev	Angle	Ext. (cw)	Pipe	Pipe OD	Connector	Hole	Horz Size	Up ( )	Offset
Invert 1	747'	0°	38"	12" RCP B WALL	16"	Hole 20	20"	20"	-2"	0"
Invert 2	747'	180°	38"	8" Orifice	8"	Hole 8	8"	8"	0"	0"
Invert 3	747'	270°	38"	8" Orifice	8"	Hole 8	8"	8"	0"	0"
Invert 4	749'	180°	38"	48" x 12" Weir	48" x 12"	Weir 48"x12"	48" x 12"	48"	24"	0"
Invert 5										
Invert 6										
Invert 7										
Invert 8										

RIGHT-SIDE UP VIEW (int. dimensions)

UPSIDE-DOWN VIEW (int. dimensions)



INSIDE WALL DIMENSIONS



Coating (Int):  
 Coating (Ext):

Seam Up: Flat  
 Seam Dn: n/a

Wall Thickness: 8"  
 Floor Height: 8"

Height (Int): 46"  
 Height (Ext): 54"

Weight (Net): 11612 lb  
 Volume (Net): 2.97cu.yd