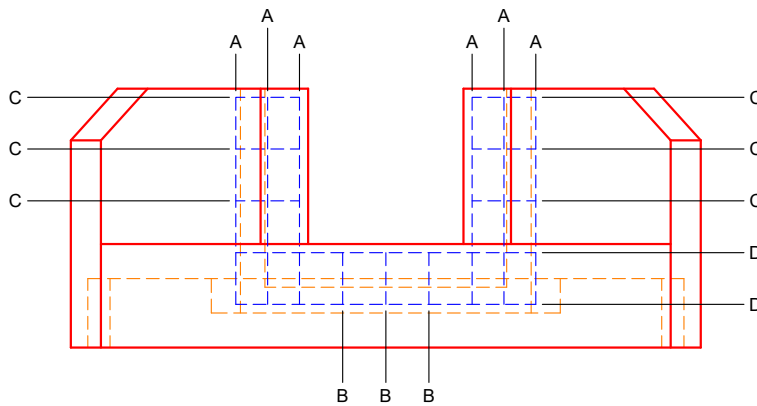
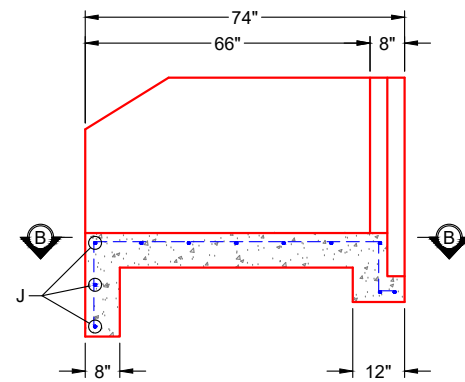


**PLAN VIEW
(RIGHT SIDE UP)**



**FRONT VIEW
(RIGHT SIDE UP)**



**SECTION A-A
(RIGHT SIDE UP)**

GENERAL NOTES:

1. REINFORCEMENT: SEE SHEETS 2, 3, & 4 FOR REBAR INFORMATION - 2" MIN. REBAR CLEARANCE (TYP)
2. CONCRETE: 5,000 PSI AT 28 DAYS
3. WEIGHT: 10,105 LBS

PRODUCTION WORK ORDER

PRODUCT I.D.: HWPCCUS

DESCRIPTION: 36" X 36" BOX CULVERT CUSTOM HW - REBAR LAYOUT



QUALITY CONTROL CHECKLIST

- ALL DIMENSIONS CORRECT.
- LIFTERS INSTALLED.
- OPENING CENTERED.
- REINFORCING CORRECT.
- SURFACE QUALITY ACCEPTABLE.
- EDGES CHAMFERED.
- ALL PATCHWORK ACCEPTABLE.

PRODUCT VIEW: RIGHT SIDE UP

CUSTOMER: MAC CONSTRUCTION & EXCAVATING, INC.

PLANT: BEAVER DAM, KY

PROJECT: 860 PZ LANDIS RIDGE 3 MG TANK

WEIGHT: 10,105 LBS

STRUCTURE: HW3

TOP SECTION JOINT: N / A

ORDER NO: 25-1718

BASE SECTION JOINT: N / A

PE: J.H. ROSS

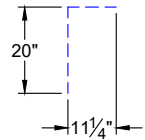
DRAWING: K. CARDWELL

QC CHECK INITIALS:

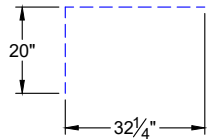
DATE: 01/19/26

SCALE: NTS

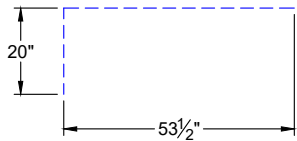
PG. 2 OF 4



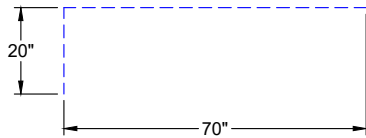
PART "E"
 #5 REBAR (GRADE 60)
 TOTAL LENGTH: 31 1/4"
 (2) REQUIRED



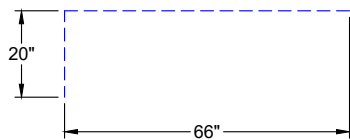
PART "F"
 #5 REBAR (GRADE 60)
 TOTAL LENGTH: 52 1/4"
 (2) REQUIRED



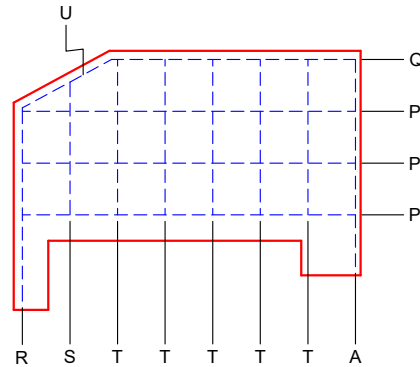
PART "G"
 #5 REBAR (GRADE 60)
 TOTAL LENGTH: 73 1/2"
 (2) REQUIRED



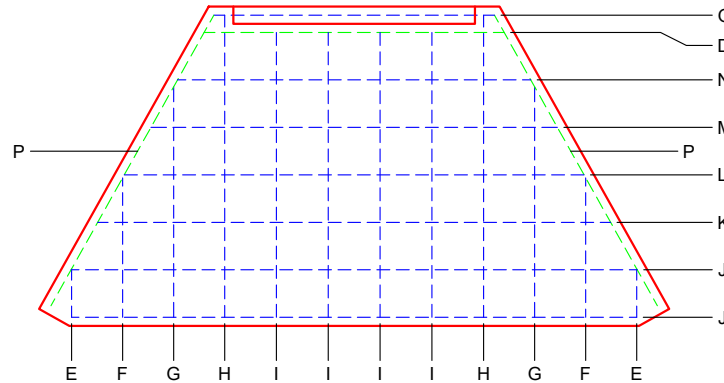
PART "H"
 #5 REBAR (GRADE 60)
 TOTAL LENGTH: 90"
 (2) REQUIRED



PART "I"
 #5 REBAR (GRADE 60)
 TOTAL LENGTH: 86"
 (4) REQUIRED



SECTION C-C
 (RIGHT SIDE UP)



SECTION B-B
 (RIGHT SIDE UP)

GENERAL NOTES:

1. REINFORCEMENT: SEE SHEETS 2, 3, & 4 FOR REBAR INFORMATION - 2" MIN. REBAR CLEARANCE (TYP)
2. CONCRETE: 5,000 PSI AT 28 DAYS
3. WEIGHT: 10,105 LBS

PRODUCTION WORK ORDER

PRODUCT I.D.: HWPCCUS

DESCRIPTION: 36" X 36" BOX CULVERT CUSTOM HW - REBAR LAYOUT



QUALITY CONTROL CHECKLIST

- ALL DIMENSIONS CORRECT.
- LIFTERS INSTALLED.
- OPENING CENTERED.
- REINFORCING CORRECT.
- SURFACE QUALITY ACCEPTABLE.
- EDGES CHAMFERED.
- ALL PATCHWORK ACCEPTABLE.

PRODUCT VIEW: RIGHT SIDE UP

CUSTOMER: MAC CONSTRUCTION & EXCAVATING, INC.

PLANT: BEAVER DAM, KY

PROJECT: 860 PZ LANDIS RIDGE 3 MG TANK

WEIGHT: 10,105 LBS

STRUCTURE: HW3

TOP SECTION JOINT: N / A

ORDER NO: 25-1718

BASE SECTION JOINT: N / A

PE: J.H. ROSS

DRAWING: K. CARDWELL


QC CHECK INITIALS:

DATE: 01/19/26

SCALE: NTS

PG. 3 OF 4

ITEM	LENGTH	SIZE	QTY.
A	48"	#5	8
B	12"	#5	3
C	15"	#5	6
D	70"	#5	2
E	SEE DETAIL	#5	2
F	SEE DETAIL	#5	2
G	SEE DETAIL	#5	2
H	SEE DETAIL	#5	2
I	SEE DETAIL	#5	4
J	131"	#5	4
K	119"	#5	1
L	107"	#5	1
M	95"	#5	1
N	82"	#5	1
O	65"	#5	1
P	78"	#5	6
Q	57"	#5	2
R	47"	#5	2
S	31"	#5	2
T	36"	#5	10
U	24"	#5	2

PRODUCTION WORK ORDER		PRODUCT I.D.: HWPCCUS	DESCRIPTION: 36" X 36" BOX CULVERT CUSTOM HW - REBAR CUTSHEET		
	QUALITY CONTROL CHECKLIST <input type="checkbox"/> ALL DIMENSIONS CORRECT. <input type="checkbox"/> LIFTERS INSTALLED. <input type="checkbox"/> OPENING CENTERED. <input type="checkbox"/> REINFORCING CORRECT. <input type="checkbox"/> SURFACE QUALITY ACCEPTABLE. <input type="checkbox"/> EDGES CHAMFERED. <input type="checkbox"/> ALL PATCHWORK ACCEPTABLE.	PRODUCT VIEW: RIGHT SIDE UP	CUSTOMER: MAC CONSTRUCTION & EXCAVATING, INC.		
		PLANT: BEAVER DAM, KY	PROJECT: 860 PZ LANDIS RIDGE 3 MG TANK		
		WEIGHT: 10,105 LBS	STRUCTURE: HW3		
		TOP SECTION JOINT: N / A	ORDER NO: 25-1718		
		BASE SECTION JOINT: N / A	PE: J.H. ROSS	DRAWING: K. CARDWELL	
		QC CHECK INITIALS:	DATE: 01/19/26	SCALE: NTS	PG. 4 OF 4