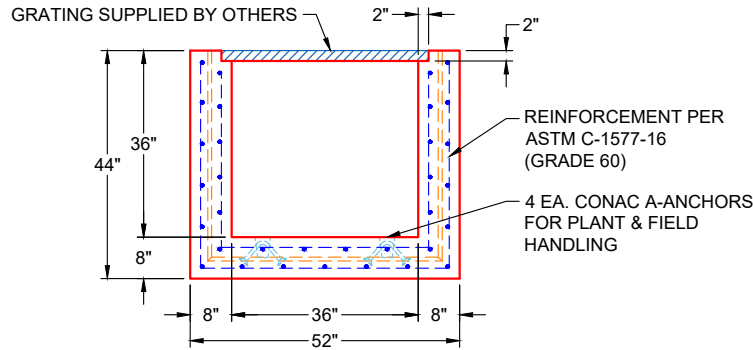
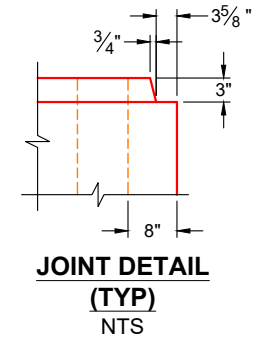


GENERAL NOTES:

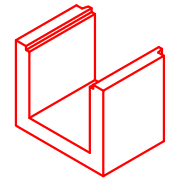
1. MANUFACTURED TO ASTM C-1577-16
2. LOAD REQUIREMENTS: PER AASHTO HL-93
3. REINFORCEMENT PER ASTM C-1577-16 (GRADE 60)
4. COVER DEPTH: 0'-0"
5. CONCRETE: 5,000 PSI AT 28 DAYS
6. JOINT SEALANT: 1" BUTYL MASTIC (CS-102)
EXTERIOR JOINT WRAP: 12" WIDE (CS-212)
7. WEIGHT: 3' X 3' RCBC = 999 LBS / LF
(36" LONG SECTION = 2,997 LBS EA.)
8. GRATING SUPPLIED BY OTHERS



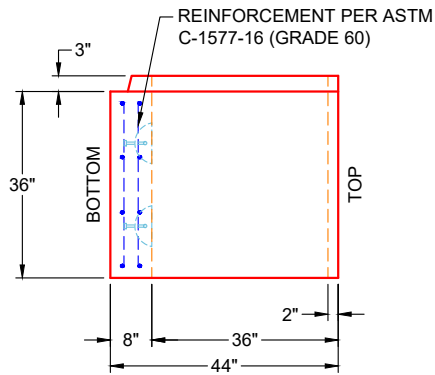
END VIEW
TYPICAL



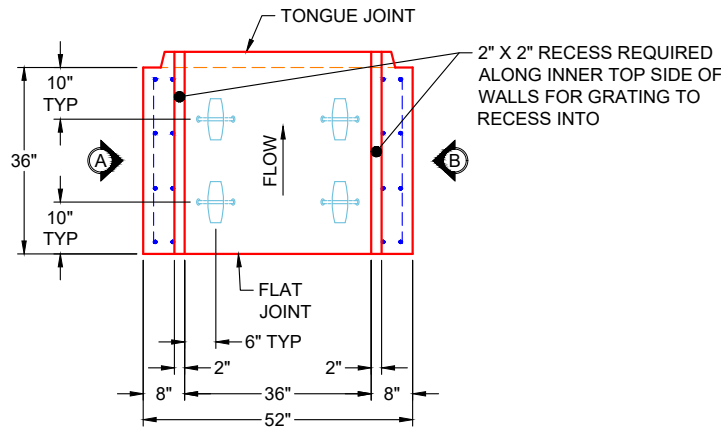
JOINT DETAIL
(TYP)
NTS



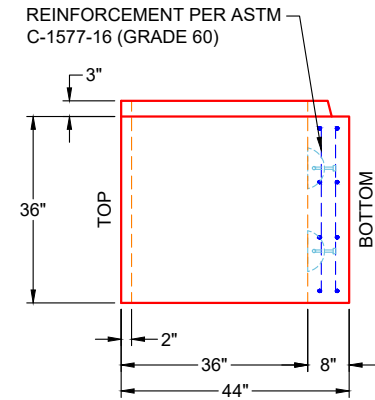
COMPONENT
ISOMETRIC VIEW
NTS



VIEW A
PC 5
(UPRIGHT IN MOLD)



PLAN VIEW
PC 5
(UPRIGHT IN MOLD)



VIEW B
PC 5
(UPRIGHT IN MOLD)

REVISION INFORMATION

| | |
|---------------------|----------------------|
| REV. Δ DATE: | NO REVISIONS TO DATE |
| | |
| | |
| | |
| | |



| | | |
|--|-----------------------|------------|
| SUBMITTAL DRAWING: 36" X 36" X 36" BOX CULVERT (8" WALLS & NO HAUNCH) | | |
| CUSTOMER: MAC CONSTRUCTION & EXCAVATING, INC. | | |
| PROJECT: 860 PZ LANDIS RIDGE 3 MG TANK | | |
| STRUCTURE: 3 X 3 BC PIECE 5 | | |
| QUOTE/SALES ORDER NO: 25-1718 | | |
| CHECKED BY: B. SMITH | DRAWN BY: K. CARDWELL | |
| DATE: 01/19/26 | SCALE: NTS | PG. 1 OF 1 |