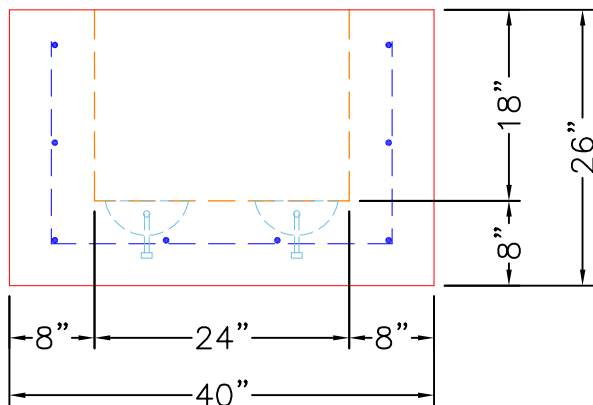
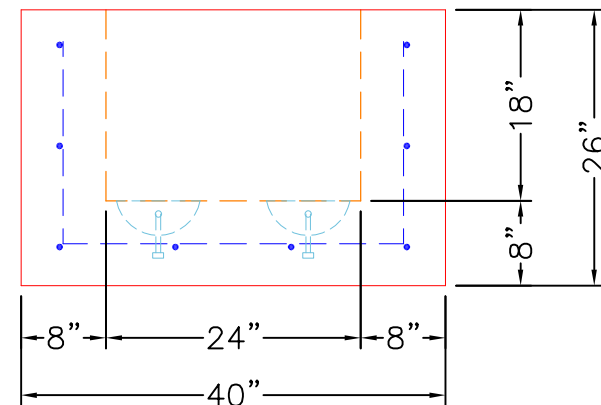


TOP VIEW

2 EA. CONAC 5CA14 ANCHORS
CAST IN FOR PLANT & FIELD
HANDLING.



FRONT VIEW



RIGHT VIEW

GENERAL NOTES:

1. MANUFACTURED TO ASTM C-913 (LATEST REVISION).
2. CONCRETE: 5,000 PSI AT 28 DAYS.
3. REINFORCING: #5 BAR @ 12" C-C E.W. PER ASTM A615 (GRADE 60).
4. WEIGHT: 2,621 LBS

PRODUCTION WORK ORDER

PRODUCT I.D.: BX2424-08BAVFX

DESCRIPTION: 24" X 24" X 18" TALL SUMP PIT



QUALITY CONTROL CHECKLIST

- ALL DIMENSIONS CORRECT.
- LIFTERS INSTALLED.
- OPENING CENTERED.
- REINFORCING CORRECT.
- SURFACE QUALITY ACCEPTABLE.
- EDGES CHAMFERED.
- ALL PATCHWORK ACCEPTABLE.

PRODUCT VIEW: RIGHT SIDE UP

CUSTOMER: CLEARY CONSTRUCTION, INC.

PLANT: BEAVER DAM, KY.

PROJECT: FLOW FOR OUR FUTURE METER VAULTS

WEIGHT: 2,621 LBS.

STRUCTURE: WATER MAIN MASTER METER VAULT

TOP SECTION JOINT: N/A

ORDER NO: 25-1706

BASE SECTION JOINT: N/A

PE: C. GOFF

DRAWING: J. COPPAGE

QC CHECK INITIALS:

DATE: 10/2/25

SCALE: NTS

PG. 1 of 1