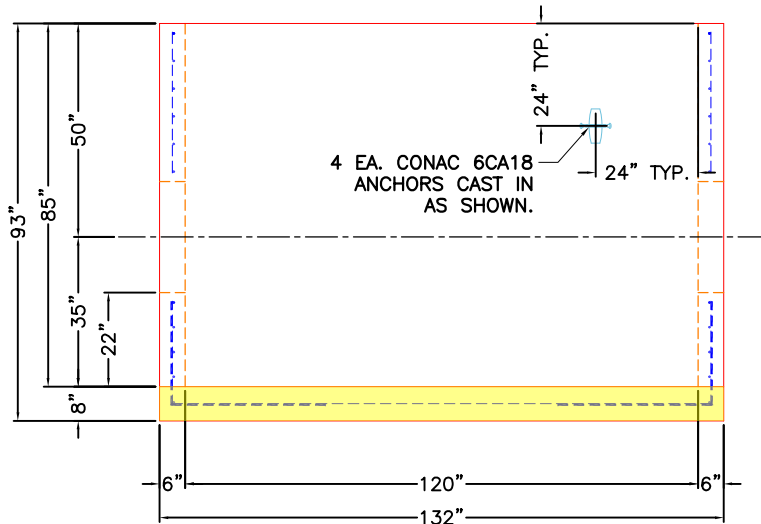


**PLAN VIEW**

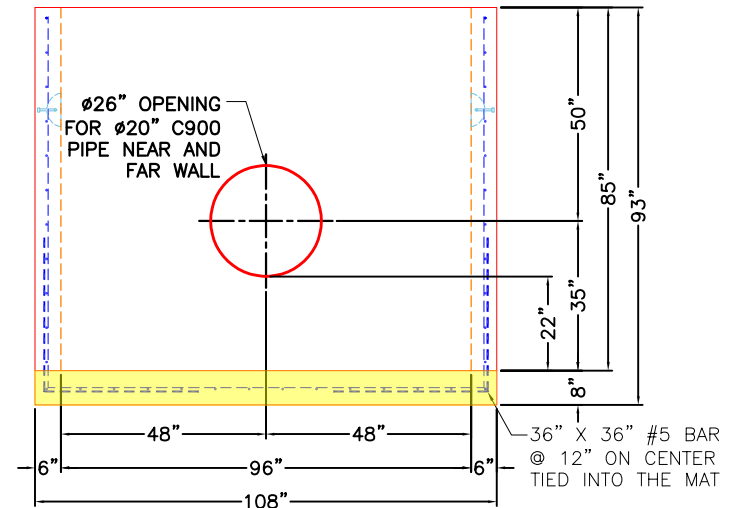


**FRONT VIEW**

**GENERAL NOTES:**

1. MANUFACTURED TO ASTM C-913 (LATEST REVISION).
2. CONCRETE: 5,000 PSI AT 28 DAYS.
3. REINFORCING: SEE REINFORCEMENT DESIGN PROVIDED BY MATT CHILDS ENGINEERING PER ASTM A615 (GRADE 60).
4. WEIGHTS:  
FIRST POUR – 9,570 LBS  
 SECOND POUR – 18,981 LBS  
 TOTAL – 28,551 LBS
5. PRE-ASSEMBLY BY ICAST.
6. LINK SEALS PROVIDED BY OTHERS.

**FIRST POUR DRAWING**



**RIGHT VIEW**

**PRODUCTION WORK ORDER**

PRODUCT I.D.: CVBVF

DESCRIPTION: 96" X 120" X 85" TALL VAULT BASE



QUALITY CONTROL CHECKLIST

- ALL DIMENSIONS CORRECT.
- LIFTERS INSTALLED.
- OPENINGS CORRECT LOCATION.
- REINFORCING CORRECT.
- SURFACE QUALITY ACCEPTABLE.
- EDGES CHAMFERED.
- ALL PATCHWORK ACCEPTABLE.

PRODUCT VIEW: RIGHT SIDE UP

CUSTOMER: CLEARY CONSTRUCTION, INC.

PLANT: BEAVER DAM, KY.

PROJECT: WCWD FLOW FOR OUR FUTURE METER VAULTS

WEIGHT: 28,551 LBS.

STRUCTURE: FORCE MAIN CHECK VALVE VAULT

TOP SECTION JOINT: N/A

ORDER NO: 25-1706

BASE SECTION JOINT: N/A

PC: C. GOFF

DRAWING: J. COPPAGE

QC CHECK INITIALS:

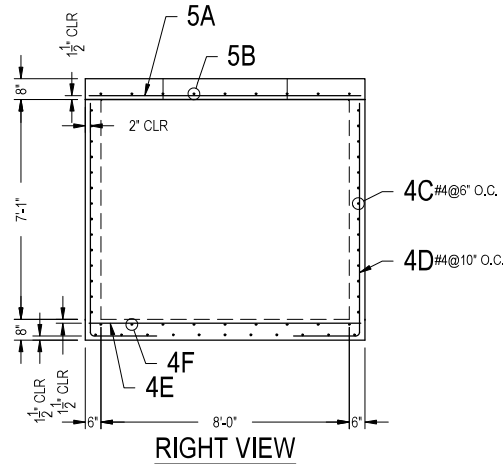
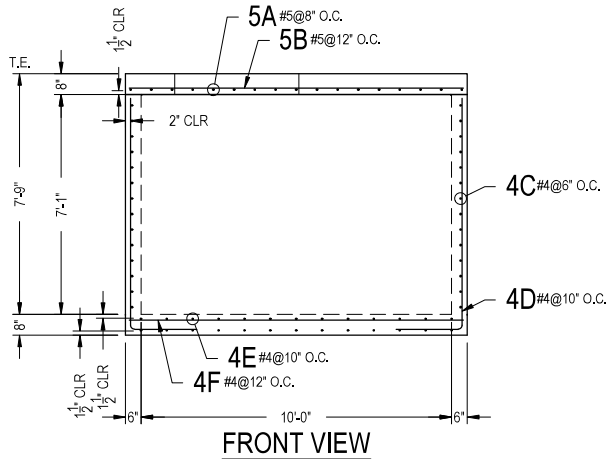
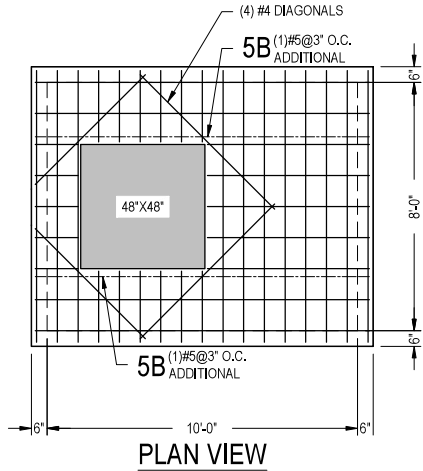
DATE: 10/2/25

SCALE: NTS

PG. 1 of 1

**DESIGN NOTE:**

HS20 LOADING - ASTM C857  
 CONCRETE 28 DAY COMPRESSIVE STRENGTH - 5000 PSI  
 REINFORCEMENT STEEL - 60,000 PSI  
 REBAR MIN SPLICE LENGTHS: #4-22" #5-28" #6-33"  
 PLACE 4-#4 BAR DIAGONAL AROUND OPENING(S)



REINFORCING STEEL SCHEDULE						BENDING DIAGRAM	
MARK	NO.	LENGTH	TYPE	lb/EA.	TOTAL LB		
5A	17	8'-9"	STR.	9.1263	155,1462		
5B	11	10'-9"	STR.	11.2123	123,3353		
4C	14	21'-1" (2)	BENT	14.0837	394,3427		
4D	48	9'-6"	BENT	6.346	304,608		
4E	13	8'-10"	STR.	5.9007	76,7087		
4F	9	10'-10"	STR.	7.2367	65,13		

STEEL REINFORCEMENT SHOWN BELOW SHALL BE CUT AS REQUIRED FOR WALL PENETRATIONS AND PRECAST JOINT LOCATIONS.  
 PLEASE NOTE: DUE TO PRECAST PRODUCTION CONSTRAINTS, NO REINFORCING WILL BE CONTINUOUS ACROSS PRECAST JOINTS.

**25-1706  
 FORCE MAIN CHECK VALVE VAULT**

**FORCE MAIN CHECK  
 VALVE VAULT**



MATT CHILDS ENGINEERING, P.L.L.C.  
 515 E. INTERSTATE 30, #1017  
 ROCKWALL, TX 75087

METER VAULTS  
 8'-0" x 10'-0"  
 CLEAR CONSTRUCTION  
 W/WD FLOW FOR FUTURE

DATE: 6/20/2025

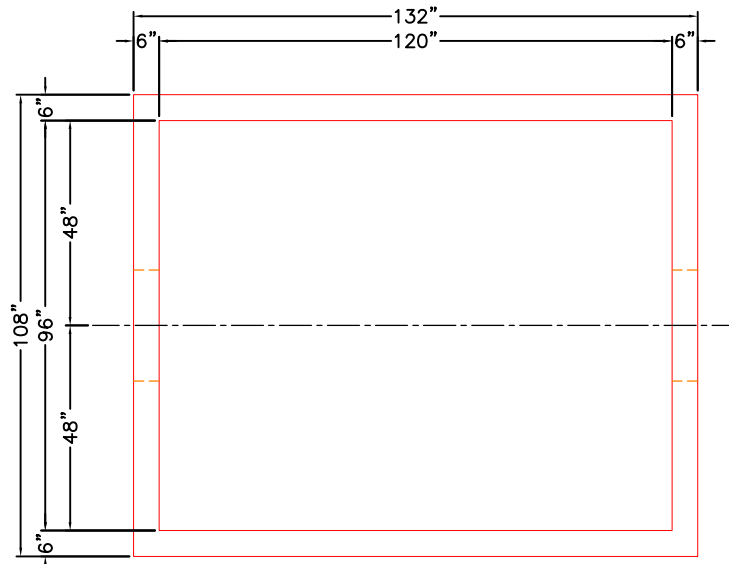
11"x17"

PAGE: 1 OF 1

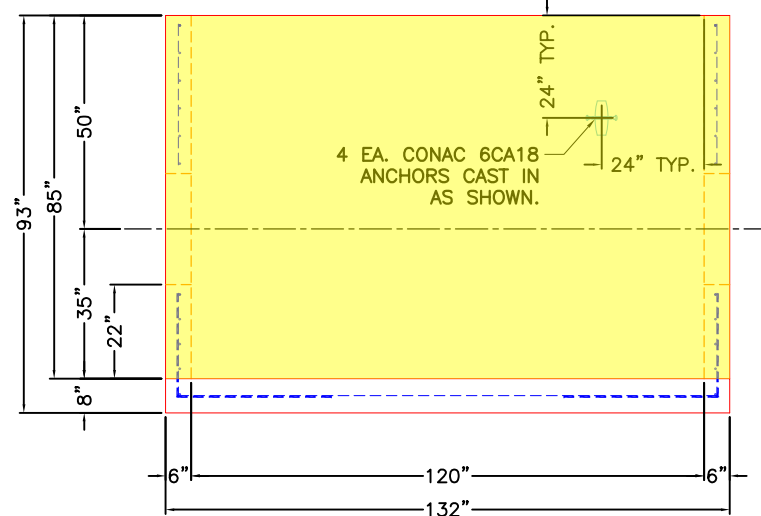
REVISIONS

NO.	DESCRIPTION
A	
B	
C	
D	

DRAWN BY: MBJ  
 SCALE: 1/4" = 1'



**PLAN VIEW**

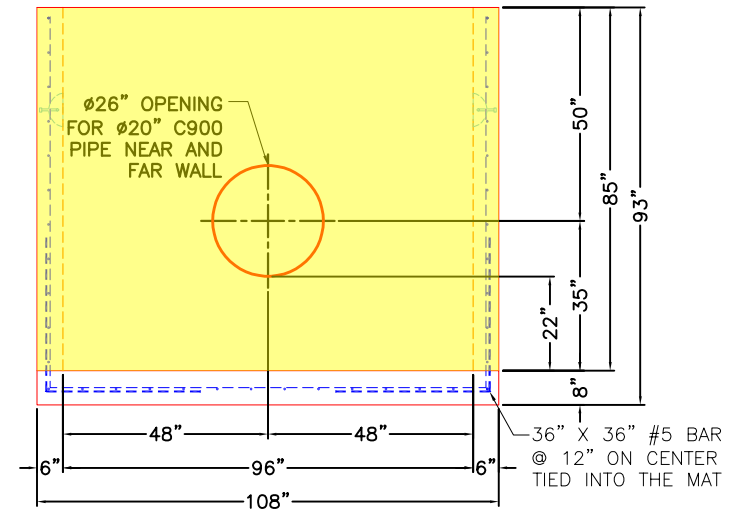


**FRONT VIEW**


**GENERAL NOTES:**

1. MANUFACTURED TO ASTM C-913 (LATEST REVISION).
2. CONCRETE: 5,000 PSI AT 28 DAYS.
3. REINFORCING: SEE REINFORCEMENT DESIGN PROVIDED BY MATT CHILDS ENGINEERING PER ASTM A615 (GRADE 60).
4. WEIGHTS:  
 FIRST POUR – 9,570 LBS  
**SECOND POUR – 18,981 LBS**  
 TOTAL – 28,551 LBS
5. PRE-ASSEMBLY BY ICAST.
6. LINK SEALS PROVIDED BY OTHERS.

**SECOND POUR DRAWING**

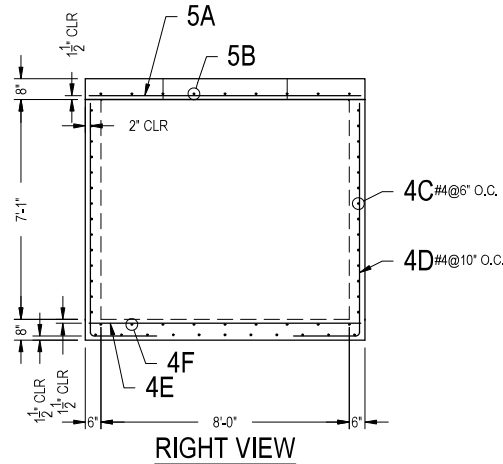
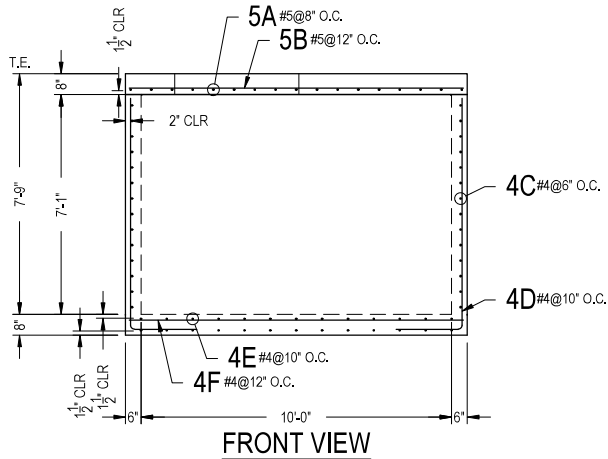
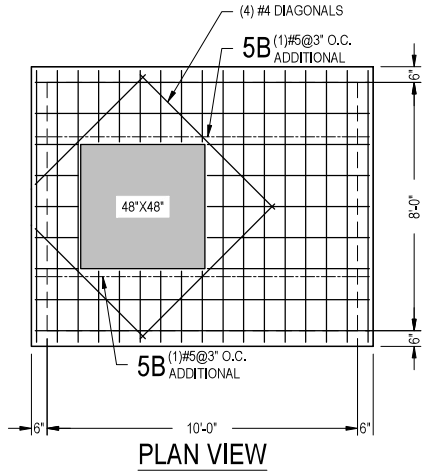


**RIGHT VIEW**

<p>PRODUCTION WORK ORDER</p>		<p>PRODUCT I.D.: CVBVF</p>	<p>DESCRIPTION: 96" X 120" X 85" TALL VAULT BASE</p>		
	<p>QUALITY CONTROL CHECKLIST</p> <p><input type="checkbox"/> ALL DIMENSIONS CORRECT.</p> <p><input type="checkbox"/> LIFTERS INSTALLED.</p> <p><input type="checkbox"/> OPENINGS CORRECT LOCATION.</p> <p><input type="checkbox"/> REINFORCING CORRECT.</p> <p><input type="checkbox"/> SURFACE QUALITY ACCEPTABLE.</p> <p><input type="checkbox"/> EDGES CHAMFERED.</p> <p><input type="checkbox"/> ALL PATCHWORK ACCEPTABLE.</p>		<p>CUSTOMER: CLEARY CONSTRUCTION, INC.</p>		
	<p>PRODUCT VIEW: RIGHT SIDE UP</p>		<p>PROJECT: WCWD FLOW FOR OUR FUTURE METER VAULTS</p>		
	<p>PLANT: BEAVER DAM, KY.</p>		<p>STRUCTURE: FORCE MAIN CHECK VALVE VAULT</p>		
	<p>WEIGHT: 28,551 LBS.</p>		<p>ORDER NO: 25-1706</p>		
	<p>TOP SECTION JOINT: N/A</p>		<p>PC: C. GOFF</p>	<p>DRAWING: J. COPPAGE</p>	
	<p>BASE SECTION JOINT: N/A</p>		<p>DATE: 10/2/25</p>	<p>SCALE: NTS</p>	<p>PG. 1 of 1</p>
<p>QC CHECK INITIALS:</p>					

**DESIGN NOTE:**

HS20 LOADING - ASTM C857  
 CONCRETE 28 DAY COMPRESSIVE STRENGTH - 5000 PSI  
 REINFORCEMENT STEEL - 60,000 PSI  
 REBAR MIN SPLICE LENGTHS: #4-22" #5-28" #6-33"  
 PLACE 4-#4 BAR DIAGONAL AROUND OPENING(S)



REINFORCING STEEL SCHEDULE						BENDING DIAGRAM	
MARK	NO.	LENGTH	TYPE	lb/EA.	TOTAL LB		
5A	17	8'-9"	STR.	9.1263	155,1462		
5B	11	10'-9"	STR.	11.2123	123,3353		
4C	14	21'-1" (2)	BENT	14.0837	394,3427		
4D	48	9'-6"	BENT	6.346	304,608		
4E	13	8'-10"	STR.	5.9007	76,7087		
4F	9	10'-10"	STR.	7.2367	65,13		

STEEL REINFORCEMENT SHOWN BELOW SHALL BE CUT AS REQUIRED FOR WALL PENETRATIONS AND PRECAST JOINT LOCATIONS.  
 PLEASE NOTE: DUE TO PRECAST PRODUCTION CONSTRAINTS, NO REINFORCING WILL BE CONTINUOUS ACROSS PRECAST JOINTS.

**25-1706  
 FORCE MAIN CHECK VALVE VAULT**

**FORCE MAIN CHECK  
 VALVE VAULT**



METER VAULTS  
 8'-0" x 10'-0"  
 CLEAR CONSTRUCTION  
 W/WD FLOW FOR FUTURE

DATE: 6/20/2025

REVISIONS

NO.	DESCRIPTION
A	
B	
C	
D	

DRAWN BY: MBJ  
 SCALE: 1/4" = 1'  
 PAGE: 1 OF 1