

Job Name: 25-1684P7 KYTC Jefferson Co. Call 200 (251007)
 Job Location: I-264 Louisville, Ky.
 Contractor: Cleary Construction, Inc.

Plant: Beaver Dam, Ky.
 3/20/2026 12:55:48 PM

Tech: J. Coppage
 PC: J. Jarvis



Structure ID: 312+92 RT DBI-13G INLET 69

P1 BX1628-08BAVF

BOX BASE 8inW, 8inF, Variable Ht

- P2) 16" x 28" - P.I.P. - BY OTHERS - 8"
- P1) 16" x 28" - BOX BASE 8inW, 8inF, Variable Ht - 26"
- 1) SECONDARY POUR - WALLS
- 2) Hole - 18
- 2) Hole - 4

0 lb
 2751 lb
 0 lb
 0 lb
 0 lb
 0 lb

 Structure Total: 2751 lb

Structure Notes:
 -KYTC STATE PROJECT 251007
 -REINFORCING: #5 BAR @ 12" C/C E.W. (TYP.)
 -DBI 13G FRAME & GRATE BY OTHERS.
 -CS-102 BUTYL REQUIRED (SUPPLIED BY ICAST).
 -#5 BAR STUBBED OUT OF TOP OF TRANSITION SLAB 5"
 AT 12" C/C FOR FIELD POURED CURB & GUTTER.
 -KYTC CERTIFICATIONS REQUIRED.

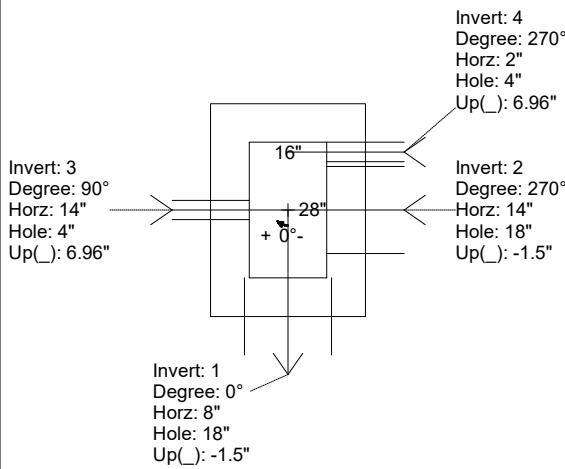
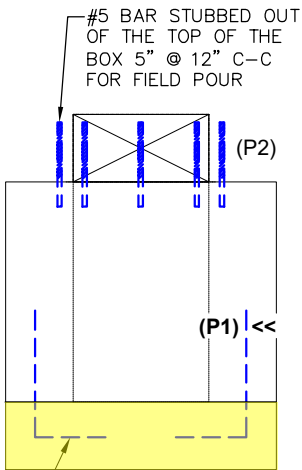
FIRST POUR DRAWING

Rim: 594.8' Rim to Invert: 2.88' Slack: 0.56" Sump: 0" Step Position:

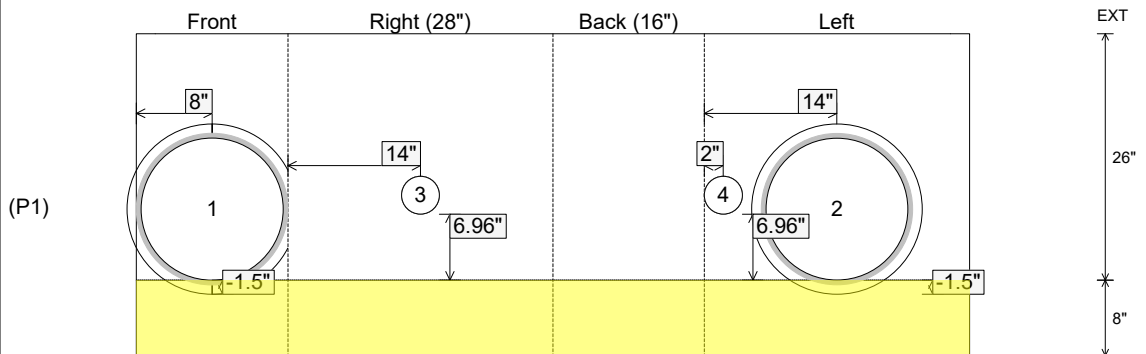
Position	Elev	Angle	Ext. (cw)	Pipe	Pipe OD	Connector	Hole	Horz Size	Up ()	Offset
Invert 1	591.92'	0°	16"	15" CMP	16"	Hole 18	18"	17"	-1.5"	0"
Invert 2	591.92'	270°	22"	15" CMP	16"	Hole 18	18"	18"	-1.5"	0"
Invert 3	592.5'	90°	22"	4" WEEP HOLE	4"	Hole 4	4"	4"	6.96"	0"
Invert 4	592.5'	270°	10"	4" WEEP HOLE	4"	Hole 4	4"	4"	6.96"	-12"
Invert 5										
Invert 6										
Invert 7										
Invert 8										

RIGHT-SIDE UP VIEW (int. dimensions)

WEIGHTS:
FIRST POUR - 945 LBS.
SECOND POUR - 1,806 LBS.
TOTAL - 2,751 LBS.



INSIDE WALL DIMENSIONS



Coating (Int):
 Coating (Ext):

Seam Up: Flat
 Seam Dn: n/a

Wall Thickness: 8"
 Floor Height: 8"

Height (Int): 26"
 Height (Ext): 34"

Weight (Net): 2751 lb
 Volume (Net): 0.7cu.yd

Job Name: 25-1684P7 KYTC Jefferson Co. Call 200 (251007)
 Job Location: I-264 Louisville, Ky.
 Contractor: Cleary Construction, Inc.

Plant: Beaver Dam, Ky.
 3/20/2026 12:55:48 PM

Tech: J. Coppage
 PC: J. Jarvis



Structure ID: 312+92 RT DBI-13G INLET 69

P1 BX1628-08BAVF

BOX BASE 8inW, 8inF, Variable Ht

- P2) 16" x 28" - P.I.P. - BY OTHERS - 8"
- P1) 16" x 28" - BOX BASE 8inW, 8inF, Variable Ht - 26"
- 1) SECONDARY POUR - WALLS
- 2) Hole - 18
- 2) Hole - 4

0 lb
 2751 lb
 0 lb
 0 lb
 0 lb
 0 lb

 Structure Total: 2751 lb

Structure Notes:
 -KYTC STATE PROJECT 251007
 -REINFORCING: #5 BAR @ 12" C/C E.W. (TYP.)
 -DBI 13G FRAME & GRATE BY OTHERS.
 -CS-102 BUTYL REQUIRED (SUPPLIED BY ICAST).
 -#5 BAR STUBBED OUT OF TOP OF TRANSITION SLAB 5"
 AT 12" C/C FOR FIELD POURED CURB & GUTTER.
 -KYTC CERTIFICATIONS REQUIRED.

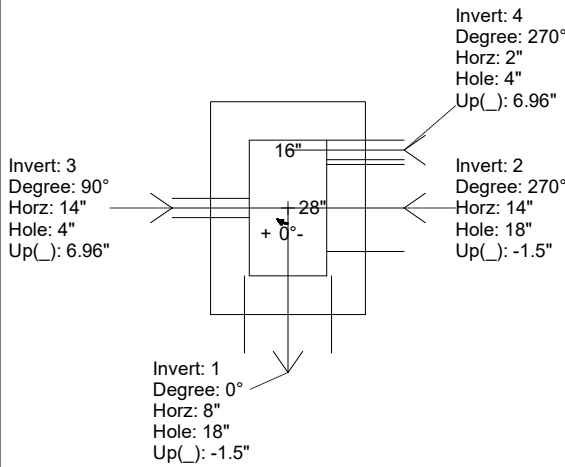
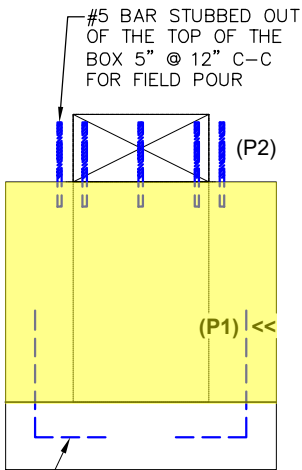
SECOND POUR DRAWING

Rim: 594.8' Rim to Invert: 2.88' Slack: 0.56" Sump: 0" Step Position:

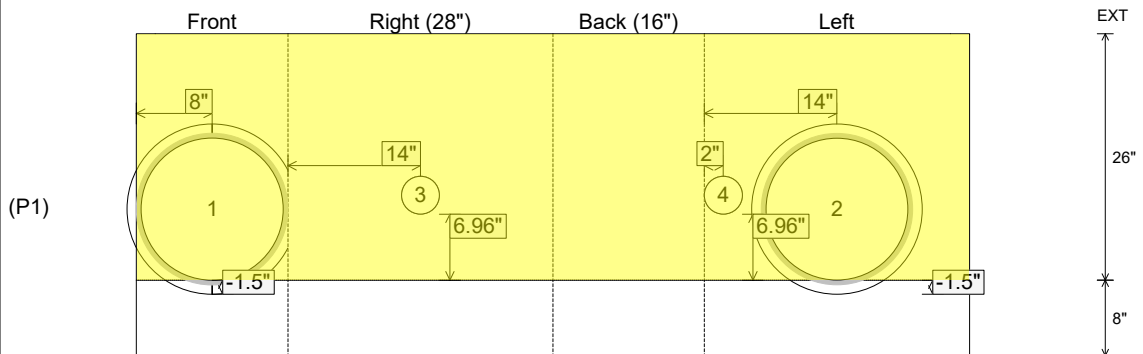
Position	Elev	Angle	Ext. (cw)	Pipe	Pipe OD	Connector	Hole	Horz Size	Up ()	Offset
Invert 1	591.92'	0°	16"	15" CMP	16"	Hole 18	18"	17"	-1.5"	0"
Invert 2	591.92'	270°	22"	15" CMP	16"	Hole 18	18"	18"	-1.5"	0"
Invert 3	592.5'	90°	22"	4" WEEP HOLE	4"	Hole 4	4"	4"	6.96"	0"
Invert 4	592.5'	270°	10"	4" WEEP HOLE	4"	Hole 4	4"	4"	6.96"	-12"
Invert 5										
Invert 6										
Invert 7										
Invert 8										

RIGHT-SIDE UP VIEW (int. dimensions)

WEIGHTS:
FIRST POUR - 945 LBS.
SECOND POUR - 1,806 LBS.
TOTAL - 2,751 LBS.



INSIDE WALL DIMENSIONS



Coating (Int):
 Coating (Ext):

Seam Up: Flat
 Seam Dn: n/a

Wall Thickness: 8"
 Floor Height: 8"

Height (Int): 26"
 Height (Ext): 34"

Weight (Net): 2751 lb
 Volume (Net): 0.7cu.yd