

Job Name: 25-1684P7 KYTC Jefferson Co. Call 200 (251007)  
 Job Location: I-264 Louisville, Ky.  
 Contractor: Cleary Construction, Inc.

Plant: Beaver Dam, Ky.  
 3/19/2026 1:04:24 PM

Tech: J. Coppage  
 PC: J. Jarvis



**Structure ID: 306+05 RT DBI TYPE 3 INLET 63**

**P1 BX3636-08BA24**

**BOX BASE 8inW, 8inF**

P2) 36" x 36" - P.I.P. - BY OTHERS - 8"  
 P1) 36" x 36" - BOX BASE 8inW, 8inF - 24"  
 1) Hole - 18

0 lb  
 4480 lb  
 0 lb  
 Structure Total: 4480 lb

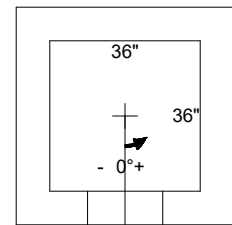
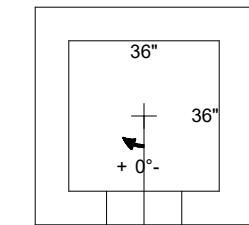
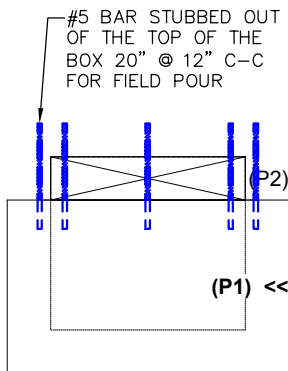
**Structure Notes:**  
 -KYTC STATE PROJECT 251007  
 -REINFORCING: #5 BAR @ 12" C/C E.W. (TYP.)  
 -FRAME & GRATES BY OTHERS.  
 -KYTC CERTIFICATIONS REQUIRED.  
 -#5 BAR EXTENDED OUT OF TOP OF BOX 20" AT 12" C/C.

Rim: 588.5' Rim to Invert: 2.69' Slack: 0.28" Sump: 0" Step Position:

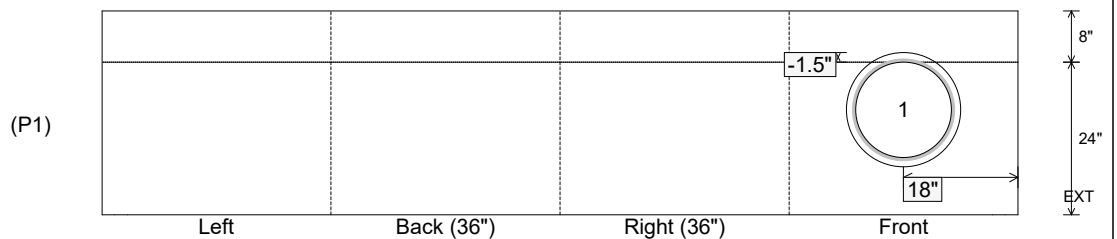
Position	Elev	Angle	Ext. (cw)	Pipe	Pipe OD	Connector	Hole	Horz Size	Up (↓)	Offset
Invert 1	585.81'	0°	26"	15" CMP	16"	Hole 18	18"	18"	-1.5"	0"
Invert 2										
Invert 3										
Invert 4										
Invert 5										
Invert 6										
Invert 7										
Invert 8										

RIGHT-SIDE UP VIEW (int. dimensions)

UPSIDE-DOWN VIEW (int. dimensions)



INSIDE WALL DIMENSIONS



Coating (Int):  
 Coating (Ext):

Seam Up: Flat  
 Seam Dn: n/a

Wall Thickness: 8"  
 Floor Height: 8"

Height (Int): 24"  
 Height (Ext): 32"

Weight (Net): 4480 lb  
 Volume (Net): 1.14cu.yd