

Job Name: 25-1684P7 KYTC Jefferson Co. Call 200 (251007)
 Job Location: I-264 Louisville, Ky.
 Contractor: Cleary Construction, Inc.

Plant: Beaver Dam, Ky.
 3/19/2026 1:05:02 PM

Tech: J. Coppage
 PC: J. Jarvis



Structure ID: 304+78 RT JB-A INLET 59

P2 BXLD2436FL8-S

BX FLAT LID 8inW SOLID

- P2) 24" x 36" - BX FLAT LID 8inW SOLID - 8"
- P1) 24" x 36" - BOX BASE 8inW, 8inF, Variable Ht - 27"
- 1) 24" x 36" - Conseal CS-102 1.00"
- 1) Hole - 26
- 2) Hole - 18
- 1) Hole - 22

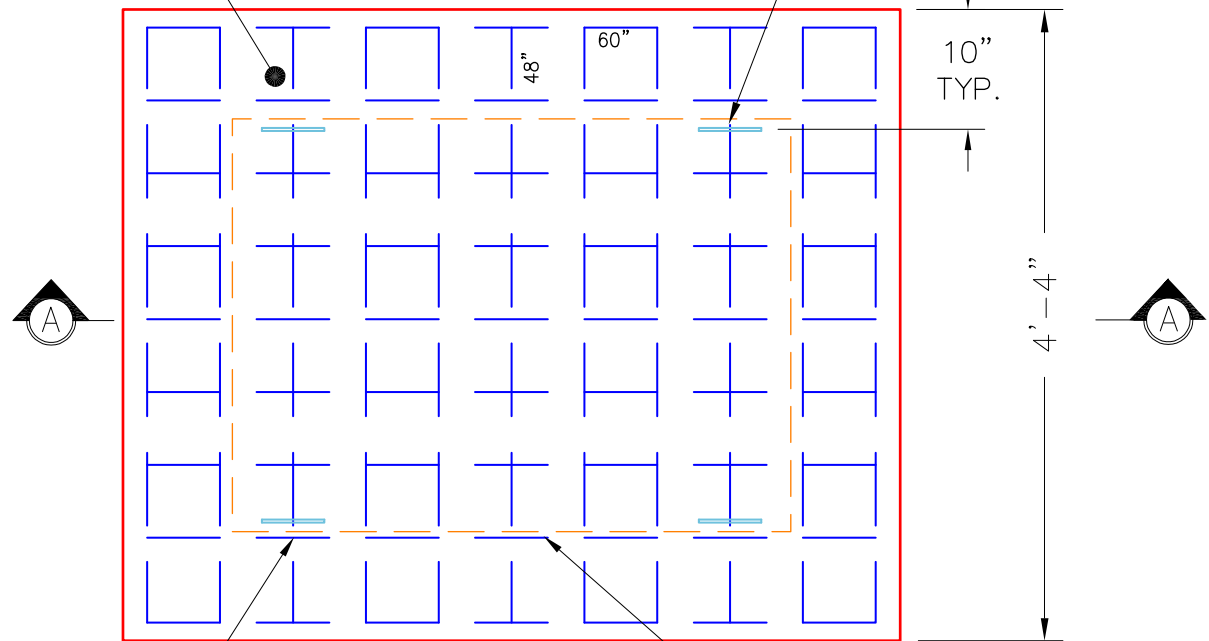
1396 lb
 3171 lb
 0 lb
 0 lb
 0 lb
 0 lb
 Structure Total: 4567 lb

Structure Notes:
 -KYTC STATE PROJECT 251007
 -REINFORCING: #5 BAR @ 12" C/C E.W. (TYP.)
 -CS-102 BUTYL REQUIRED (SUPPLIED BY ICAST).
 -KYTC CERTIFICATIONS REQUIRED.

FLOATED FINISH ON TOP SURFACE

****KYTC CERTS REQUIRED****

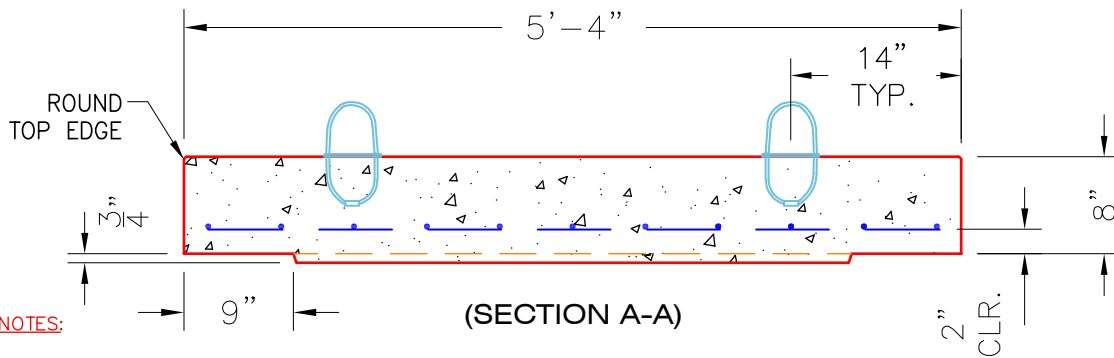
4 EA. CONAC .8 TON $8\frac{1}{16}$ " (6MM) WIRE ROPE ANCHORS REQUIRED—MINIMUM.



#4 BAR @ 6" C/C E.W. (TYP.)

(PLAN VIEW)

$\frac{3}{4}$ " DEEP X 9" WIDE RECESS REQUIRED



- NOTES:**
- CONCRETE: 4500 PSI @ 28 DAYS.
 - MANUFACTURE TO KYTC SPECIFICATIONS.
 - REINFORCING: #4 BAR @ 6" C/C E.W.—GRADE 60. (BOTTOM LAYER ONLY)
 - 4 EA. CONAC WIRE LOOP LIFTERS REQUIRED.

#4 BAR CUT LIST
 9 EA. @ 60"
 11 EA. @ 48"

Coating (Int): Coating (Ext):	Seam Up: Flat Seam Dn: Flat	Wall Thickness: 8"	Height (Ext): 8"	Weight (Net): 1396 lb Volume (Net): 0.36cu.yd
----------------------------------	--------------------------------	--------------------	------------------	--