

Job Name: 25-1684P7 KYTC Jefferson Co. Call 200 (251007)
 Job Location: I-264 Louisville, Ky.
 Contractor: Cleary Construction, Inc.

Plant: Beaver Dam, Ky.
 3/20/2026 12:55:47 PM

Tech: J. Coppage
 PC: J. Jarvis



Structure ID: 303+95 RT DBI-13S INLET 56

P1 BX1660-08BAVF

BOX BASE 8inW, 8inF, Variable Ht

- P2) 16" x 60" - P.I.P. - BY OTHERS - 8"
- P1) 16" x 60" - BOX BASE 8inW, 8inF, Variable Ht - 19"
- 1) SECONDARY POUR - WALLS
- 1) DOGHOUSE INVRTD - 22"x20"
- 2) Hole - 18
- 2) Hole - 4

0 lb
 3466 lb
 0 lb
 0 lb
 0 lb
 0 lb
 0 lb
 Structure Total: 3466 lb

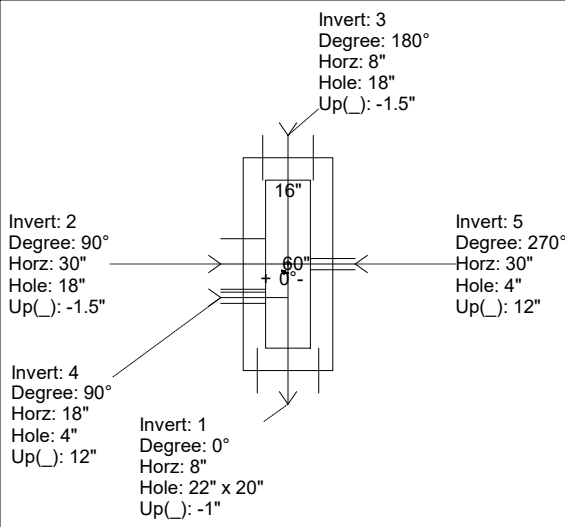
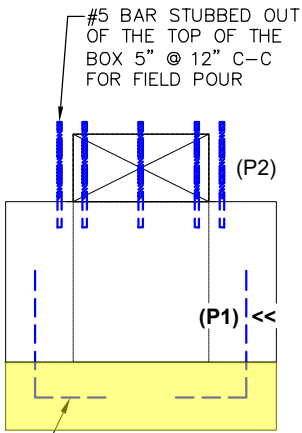
Structure Notes:
 -KYTC STATE PROJECT 251007
 -REINFORCING: #5 BAR @ 12" C/C E.W. (TYP.)
 -DBI 13S FRAME & GRATE BY OTHERS.
 -CS-102 BUTYL REQUIRED (SUPPLIED BY ICAST).
 -#5 BAR STUBBED OUT OF TOP OF BOX 5" AT 12" C/C FOR FIELD POURED CURB & GUTTER.
 -KYTC CERTIFICATIONS REQUIRED.

FIRST POUR DRAWING

Rim: 587.8' Rim to Invert: 2.3' Slack: 0.6" Sump: 0" Step Position:

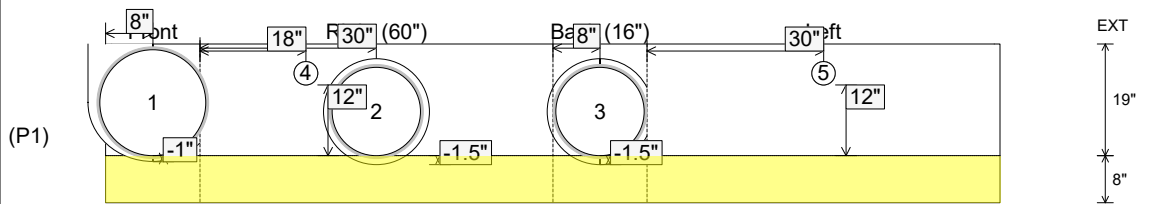
Position	Elev	Angle	Ext. (cw)	Pipe	Pipe OD	Connector	Hole	Horz Size	Up ()	Offset
Invert 1	585.5'	0°	16"	18" CMP	19"	DOGHOUSE INVRTD 22"x20"	22" x 20"	19"	-1"	0"
Invert 2	585.5'	90°	38"	15" CMP	16"	Hole 18	18"	18"	-1.5"	0"
Invert 3	585.5'	180°	16"	15" CMP	16"	Hole 18	18"	17"	-1.5"	0"
Invert 4	586.5'	90°	26"	4" WEEP HOLE	4"	Hole 4	4"	4"	12"	-12"
Invert 5	586.5'	270°	38"	4" WEEP HOLE	4"	Hole 4	4"	4"	12"	0"
Invert 6										
Invert 7										
Invert 8										

RIGHT-SIDE UP VIEW (int. dimensions)



WEIGHTS:
FIRST POUR - 1,633 LBS.
SECOND POUR - 1,833 LBS.
TOTAL - 3,466 LBS.

INSIDE WALL DIMENSIONS



Coating (Int):
 Coating (Ext):

Seam Up: Flat
 Seam Dn: n/a

Wall Thickness: 8"
 Floor Height: 8"

Height (Int): 19"
 Height (Ext): 27"

Weight (Net): 3466 lb
 Volume (Net): 0.88cu.yd

Job Name: 25-1684P7 KYTC Jefferson Co. Call 200 (251007)
 Job Location: I-264 Louisville, Ky.
 Contractor: Cleary Construction, Inc.

Plant: Beaver Dam, Ky.
 3/20/2026 12:55:47 PM

Tech: J. Coppage
 PC: J. Jarvis



Structure ID: 303+95 RT DBI-13S INLET 56

P1 BX1660-08BAVF

BOX BASE 8inW, 8inF, Variable Ht

- P2) 16" x 60" - P.I.P. - BY OTHERS - 8"
- P1) 16" x 60" - BOX BASE 8inW, 8inF, Variable Ht - 19"
- 1) SECONDARY POUR - WALLS
- 1) DOGHOUSE INVRTD - 22"x20"
- 2) Hole - 18
- 2) Hole - 4

Structure Total: 3466 lb

Structure Notes:
 -KYTC STATE PROJECT 251007
 -REINFORCING: #5 BAR @ 12" C/C E.W. (TYP.)
 -DBI 13S FRAME & GRATE BY OTHERS.
 -CS-102 BUTYL REQUIRED (SUPPLIED BY ICAST).
 -#5 BAR STUBBED OUT OF TOP OF BOX 5" AT 12" C/C FOR FIELD POURED CURB & GUTTER.
 -KYTC CERTIFICATIONS REQUIRED.

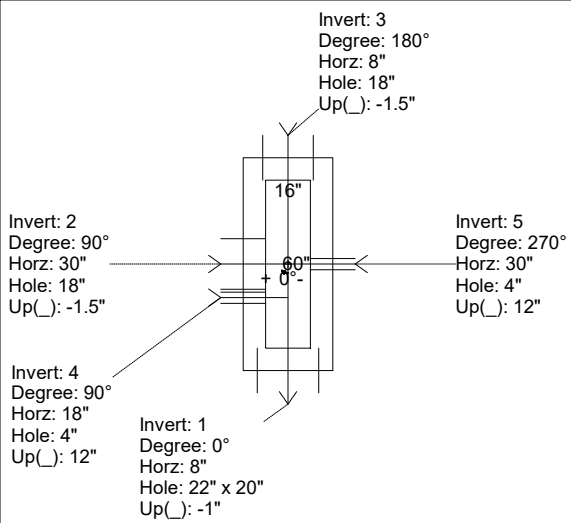
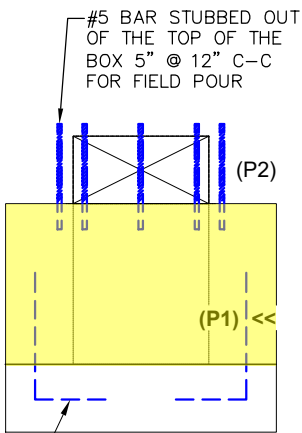
SECOND POUR DRAWING

Rim: 587.8' Rim to Invert: 2.3' Slack: 0.6" Sump: 0" Step Position:

Position	Elev	Angle	Ext. (cw)	Pipe	Pipe OD	Connector	Hole	Horz Size	Up ()	Offset
Invert 1	585.5'	0°	16"	18" CMP	19"	DOGHOUSE INVRTD 22"x20"	22" x 20"	19"	-1"	0"
Invert 2	585.5'	90°	38"	15" CMP	16"	Hole 18	18"	18"	-1.5"	0"
Invert 3	585.5'	180°	16"	15" CMP	16"	Hole 18	18"	17"	-1.5"	0"
Invert 4	586.5'	90°	26"	4" WEEP HOLE	4"	Hole 4	4"	4"	12"	-12"
Invert 5	586.5'	270°	38"	4" WEEP HOLE	4"	Hole 4	4"	4"	12"	0"
Invert 6										
Invert 7										
Invert 8										

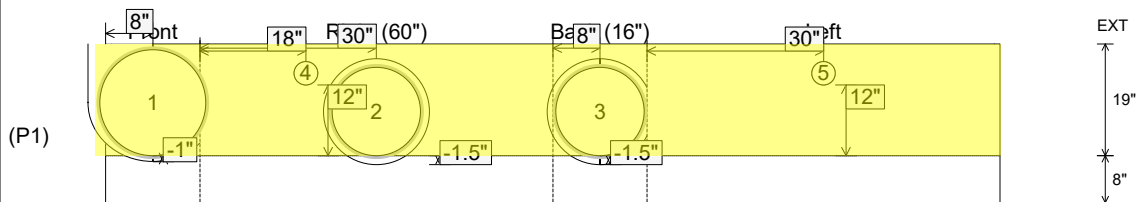
RIGHT-SIDE UP VIEW (int. dimensions)

WEIGHTS:
FIRST POUR - 1,633 LBS.
SECOND POUR - 1,833 LBS.
TOTAL - 3,466 LBS.



18" X 10" #5 "L" BAR @ 12" ON CENTER TIED INTO THE MAT

INSIDE WALL DIMENSIONS



Coating (Int):
 Coating (Ext):

Seam Up: Flat
 Seam Dn: n/a

Wall Thickness: 8"
 Floor Height: 8"

Height (Int): 19"
 Height (Ext): 27"

Weight (Net): 3466 lb
 Volume (Net): 0.88cu.yd