

Job Name: 25-1684P7 KYTC Jefferson Co. Call 200 (251007)  
 Job Location: I-264 Louisville, Ky.  
 Contractor: Cleary Construction, Inc.

Plant: Beaver Dam, Ky.  
 3/20/2026 12:55:46 PM

Tech: J. Coppage  
 PC: J. Jarvis



**Structure ID: 303+12 RT DBI-13G INLET 55**

**P1 BX1628-08BAVF**

**BOX BASE 8inW, 8inF, Variable Ht**

- P2) 16" x 28" - P.I.P. - BY OTHERS - 8"
- P1) 16" x 28" - BOX BASE 8inW, 8inF, Variable Ht - 19"
- 1) SECONDARY POUR - WALLS
- 1) Hole - 18
- 2) Hole - 4

0 lb  
 2315 lb  
 0 lb  
 0 lb  
 0 lb  
 -----  
 Structure Total: 2315 lb

**Structure Notes:**  
 -KYTC STATE PROJECT 251007  
 -REINFORCING: #5 BAR @ 12" C/C E.W. (TYP.)  
 -DBI 13G FRAME & GRATE BY OTHERS.  
 -CS-102 BUTYL REQUIRED (SUPPLIED BY ICAST).  
 -#5 BAR STUBBED OUT OF TOP OF BOX 5" AT 12" C/C FOR FIELD POURED CURB & GUTTER.  
 -KYTC CERTIFICATIONS REQUIRED.

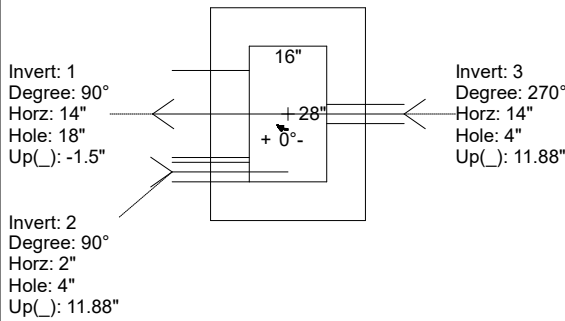
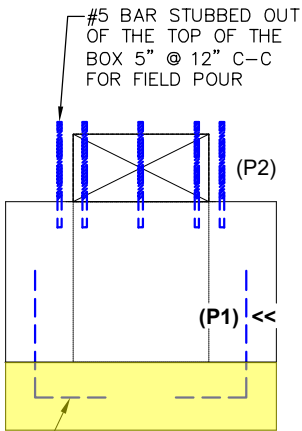
**FIRST POUR DRAWING**

Rim: 588.28' Rim to Invert: 2.27' Slack: 0.24" Sump: 0" Step Position:

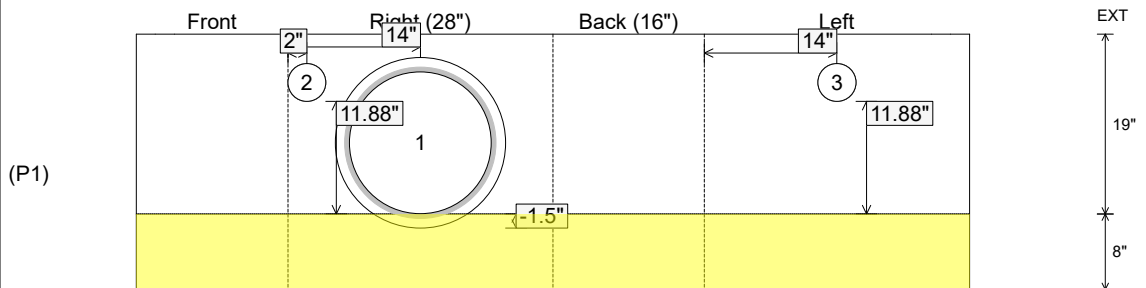
| Position | Elev    | Angle | Ext. (cw) | Pipe         | Pipe OD | Connector | Hole | Horz Size | Up ( ) | Offset |
|----------|---------|-------|-----------|--------------|---------|-----------|------|-----------|--------|--------|
| Invert 1 | 586.01' | 90°   | 22"       | 15" CMP      | 16"     | Hole 18   | 18"  | 18"       | -1.5"  | 0"     |
| Invert 2 | 587'    | 90°   | 10"       | 4" WEEP HOLE | 4"      | Hole 4    | 4"   | 4"        | 11.88" | -12"   |
| Invert 3 | 587'    | 270°  | 22"       | 4" WEEP HOLE | 4"      | Hole 4    | 4"   | 4"        | 11.88" | 0"     |
| Invert 4 |         |       |           |              |         |           |      |           |        |        |
| Invert 5 |         |       |           |              |         |           |      |           |        |        |
| Invert 6 |         |       |           |              |         |           |      |           |        |        |
| Invert 7 |         |       |           |              |         |           |      |           |        |        |
| Invert 8 |         |       |           |              |         |           |      |           |        |        |

**RIGHT-SIDE UP VIEW (int. dimensions)**

**WEIGHTS:**  
**FIRST POUR - 945 LBS.**  
**SECOND POUR - 1,370 LBS.**  
**TOTAL - 2,315 LBS.**



**INSIDE WALL DIMENSIONS**



Coating (Int):  
 Coating (Ext):

Seam Up: Flat  
 Seam Dn: n/a

Wall Thickness: 8"  
 Floor Height: 8"

Height (Int): 19"  
 Height (Ext): 27"

Weight (Net): 2315 lb  
 Volume (Net): 0.59cu.yd

Job Name: 25-1684P7 KYTC Jefferson Co. Call 200 (251007)  
 Job Location: I-264 Louisville, Ky.  
 Contractor: Cleary Construction, Inc.

Plant: Beaver Dam, Ky.  
 3/20/2026 12:55:46 PM

Tech: J. Coppage  
 PC: J. Jarvis



**Structure ID: 303+12 RT DBI-13G INLET 55**

**P1 BX1628-08BAVF**

**BOX BASE 8inW, 8inF, Variable Ht**

- P2) 16" x 28" - P.I.P. - BY OTHERS - 8"
- P1) 16" x 28" - BOX BASE 8inW, 8inF, Variable Ht - 19"
- 1) SECONDARY POUR - WALLS
- 1) Hole - 18
- 2) Hole - 4

0 lb  
 2315 lb  
 0 lb  
 0 lb  
 0 lb  
 -----  
 Structure Total: 2315 lb

**Structure Notes:**  
 -KYTC STATE PROJECT 251007  
 -REINFORCING: #5 BAR @ 12" C/C E.W. (TYP.)  
 -DBI 13G FRAME & GRATE BY OTHERS.  
 -CS-102 BUTYL REQUIRED (SUPPLIED BY ICAST).  
 -#5 BAR STUBBED OUT OF TOP OF BOX 5" AT 12" C/C FOR FIELD POURED CURB & GUTTER.  
 -KYTC CERTIFICATIONS REQUIRED.

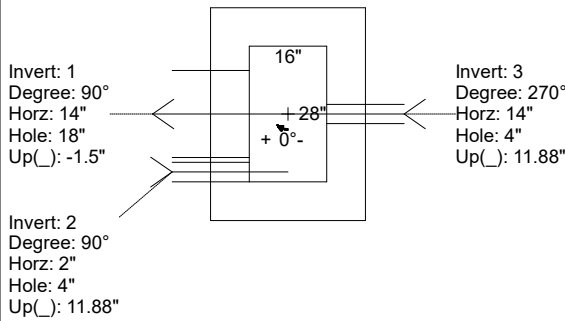
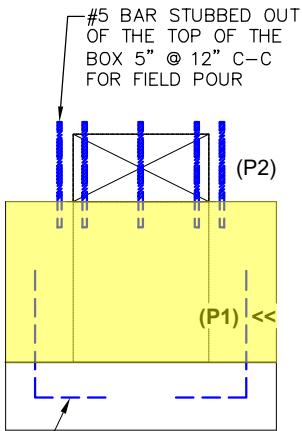
**SECOND POUR DRAWING**

Rim: 588.28' Rim to Invert: 2.27' Slack: 0.24" Sump: 0" Step Position:

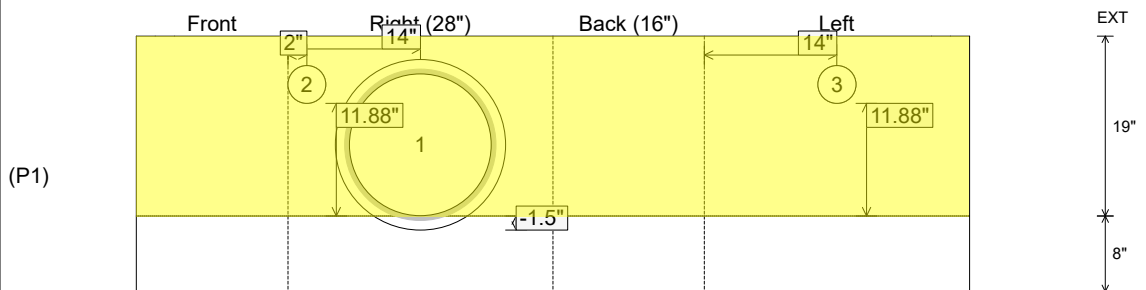
| Position | Elev    | Angle | Ext. (cw) | Pipe         | Pipe OD | Connector | Hole | Horz Size | Up ( ) | Offset |
|----------|---------|-------|-----------|--------------|---------|-----------|------|-----------|--------|--------|
| Invert 1 | 586.01' | 90°   | 22"       | 15" CMP      | 16"     | Hole 18   | 18"  | 18"       | -1.5"  | 0"     |
| Invert 2 | 587'    | 90°   | 10"       | 4" WEEP HOLE | 4"      | Hole 4    | 4"   | 4"        | 11.88" | -12"   |
| Invert 3 | 587'    | 270°  | 22"       | 4" WEEP HOLE | 4"      | Hole 4    | 4"   | 4"        | 11.88" | 0"     |
| Invert 4 |         |       |           |              |         |           |      |           |        |        |
| Invert 5 |         |       |           |              |         |           |      |           |        |        |
| Invert 6 |         |       |           |              |         |           |      |           |        |        |
| Invert 7 |         |       |           |              |         |           |      |           |        |        |
| Invert 8 |         |       |           |              |         |           |      |           |        |        |

**RIGHT-SIDE UP VIEW (int. dimensions)**

**WEIGHTS:**  
**FIRST POUR - 945 LBS.**  
**SECOND POUR - 1,370 LBS.**  
**TOTAL - 2,315 LBS.**



**INSIDE WALL DIMENSIONS**



Coating (Int):  
 Coating (Ext):

Seam Up: Flat  
 Seam Dn: n/a

Wall Thickness: 8"  
 Floor Height: 8"

Height (Int): 19"  
 Height (Ext): 27"

Weight (Net): 2315 lb  
 Volume (Net): 0.59cu.yd