

Job Name: 25-1684P7 KYTC Jefferson Co. Call 200 (251007)
 Job Location: I-264 Louisville, Ky.
 Contractor: Cleary Construction, Inc.

Plant: Beaver Dam, Ky.
 3/19/2026 1:05:00 PM

Tech: J. Coppage
 PC: J. Jarvis



Structure ID: 132+10 LT JB-A INLET 41

P2 BX024024-08LD08

CB FLAT TOP 8"W SOLID

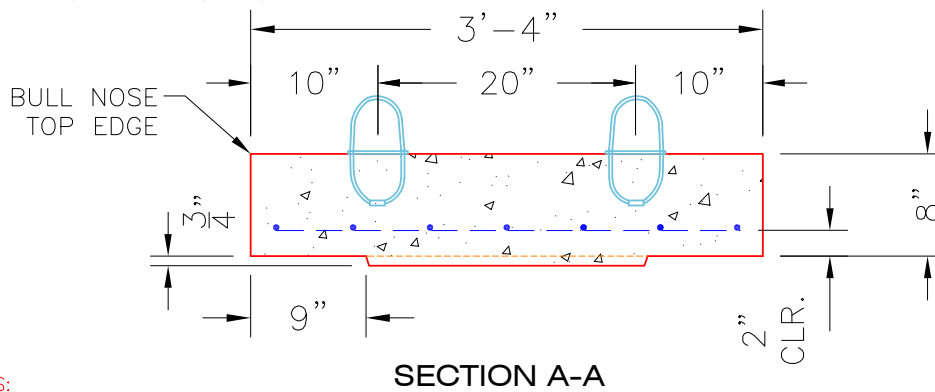
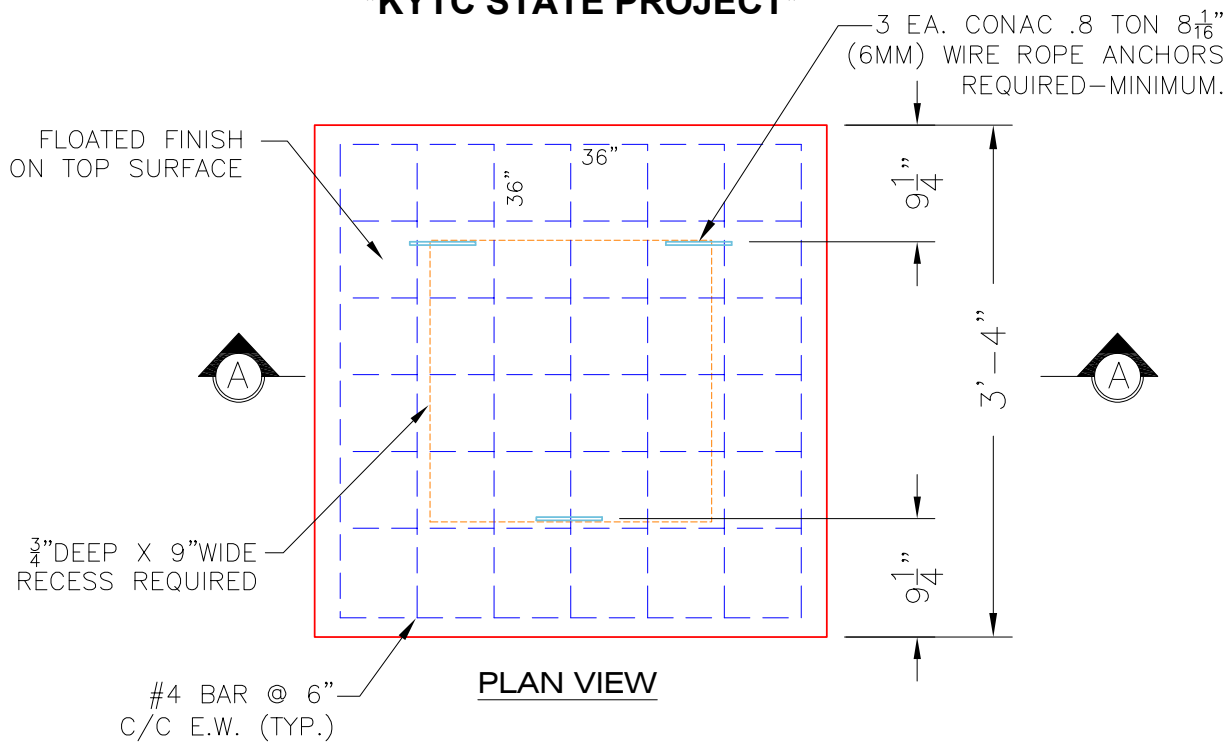
- P2) 24" x 24" - CB FLAT TOP 8"W SOLID - 8"
- P1) 24" x 24" - BOX BASE 8inW, 8inF, Variable Ht - 20"
- 1) 24" x 24" - Conseal CS-102 1.00"
- 2) Hole - 18

1074 lb
 2451 lb
 0 lb
 0 lb

 Structure Total: 3525 lb

Structure Notes:
 -KYTC STATE PROJECT 251007
 -REINFORCING: #5 BAR @ 12" C/C E.W. (TYP.)
 -CS-102 BUTYL REQUIRED (SUPPLIED BY ICAST).
 -KYTC CERTIFICATIONS REQUIRED.

KYTC STATE PROJECT



NOTES:

- CONCRETE: 4500 PSI @ 28 DAYS.
- MANUFACTURE TO KYTC SPECIFICATIONS.
- REINFORCING: #4 BAR @ 6" C/C E.W. - GRADE 60.
 (BOTTOM LAYER ONLY)
- 3 EA. CONAC WIRE LOOP LIFTERS REQUIRED.
- KYTC CERTIFICATIONS REQUIRED.

[#4 BAR CUT LIST](#)
 14 EA. @ 36"

| | | | | |
|----------------------------------|--------------------------------|--------------------|------------------|--|
| Coating (Int): Coating (Ext): | Seam Up: Flat Seam Dn: Flat | Wall Thickness: 8" | Height (Ext): 8" | Weight (Net): 1074 lb Volume (Net): 0.27cu.yd |
|----------------------------------|--------------------------------|--------------------|------------------|--|