

Job Name: 25-1684P4 KYTC Jefferson Co. Call 200 (251007)
 Job Location: I-264 Louisville, Ky.
 Contractor: Cleary Construction, Inc.

Plant: Beaver Dam, Ky.
 1/22/2026 6:51:57 AM

Tech: J. Horsley
 PC: J. Jarvis



Structure ID: JB 04 - JB-A

P2 BX3660-8LD8S

BX FLAT LID 8inW SOLID F/F

- P2) 36" x 60" - BX FLAT LID 8inW SOLID F/F - 8"
- P1) 36" x 60" - BOX BASE 8inW, 8inF, Variable Ht F/n - 56"
- 1) 36" x 60" - Conseal CS-102 1.00"
- 2) Hole - 52

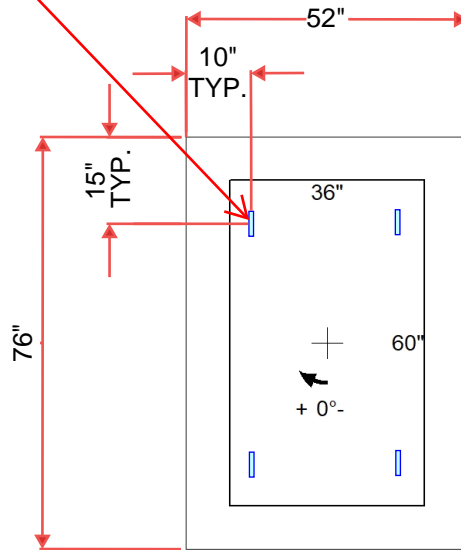
2653 lb
 8222 lb
 0 lb
 0 lb

 Structure Total: 10875 lb

Structure Notes:
 ** KYTC STATE PROJECT **
 1. PER KYTC JUNCTION BOX /ASTM C913 SPEC'S.
 2. CONCRETE = 4,000 PSI AT 28 DAYS.
 3. SOLID TOP SLAB - NO CASTING.

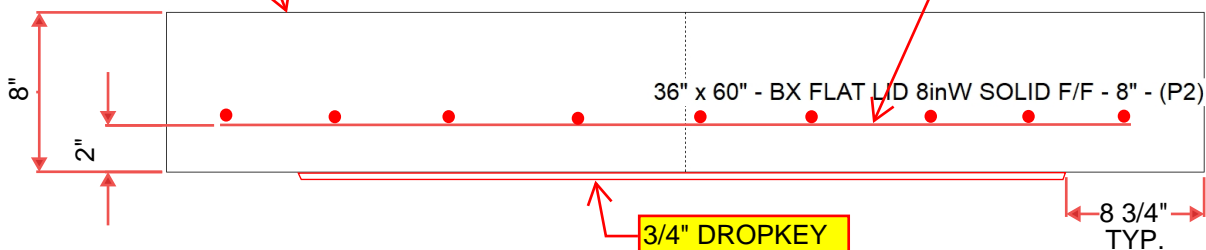
REINFORCING PER ASTM A615 (GRADE 60).
 - TOP SLAB (As .62) #5 BARS AT 6" C.C.E.W.
 - WALLS (As .31) #5 BARS AT 12" C.C.E.W.
 - FLOOR (As .31) #5 BARS AT 12" C.C.E.W.

4 ea. CONAC WRA016
 WIRE ROPE LIFTERS



FLOAT FINISH
 ON TOP SURFACE

#5 BARS
 AT 6" C.C.E.W.



Coating (Int):
 Coating (Ext):

Seam Up: Flat
 Seam Dn: Flat

Wall Thickness: 8"

Height (Ext): 8"

Weight (Net): 2653 lb
 Volume (Net): 0.68cu.yd