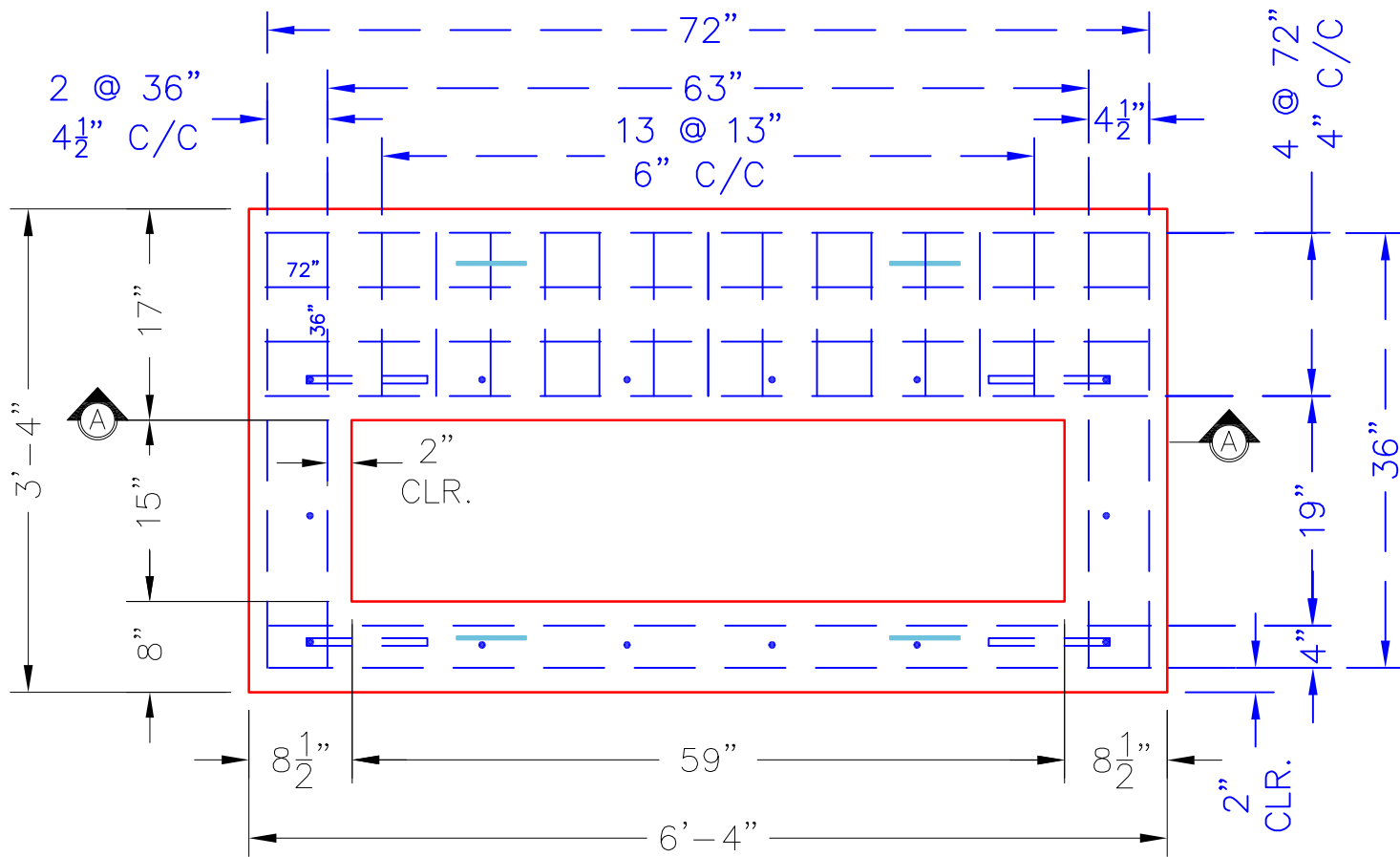


KYTC STATE PROJECT



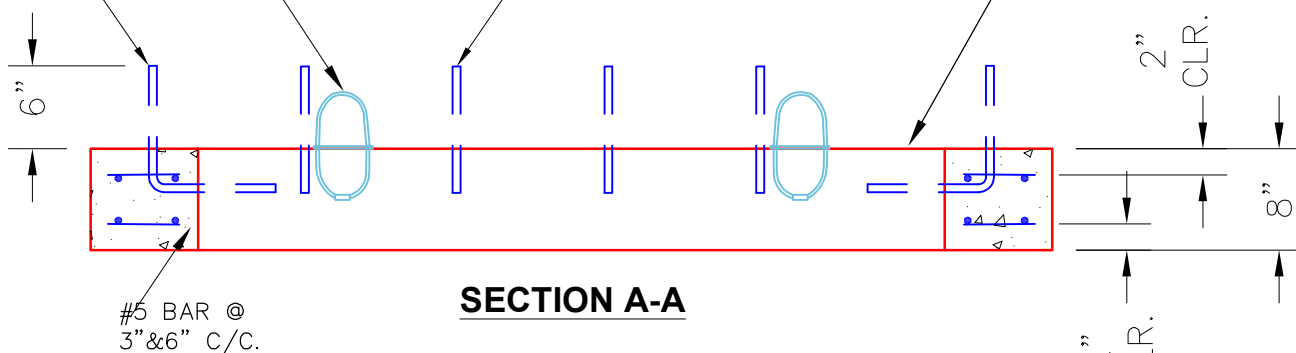
PLAN VIEW

4 EA. CONAC .8 TON 8 1/16"
(6MM) WIRE ROPE ANCHORS
REQUIRED—MINIMUM.

#5 "L" BAR—4 EA.
@ CORNERS

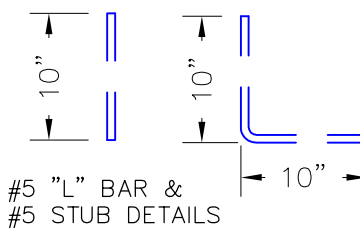
#5 STUBS AT 12" C/C
(10 EA. @ 10")

15"X59" OPENING
OFFSET AS SHOWN.



NOTES:

- CONCRETE: 4500 PSI @ 28 DAYS.
- MANUFACTURED TO KDOT ASTM C-913 SPECIFICATIONS.
- REINFORCING: #5 BAR AS SHOWN—GRADE 60.
- KYTC CERTIFICATIONS REQUIRED.
- 4 EA. CONAC WIRE LOOP LIFTS REQUIRED (MIN.)



- #5 BAR CUT LIST**
- 12 EA. @ 72" LG.
 - 8 EA. @ 36" LG.
 - 4 EA. @ 20" LG.
 - 8 EA @ 10" LG.

PRODUCTION WORK ORDER

PRODUCT I.D.:
BX024060-08LD08-1559

DESCRIPTION:
DBI 13S TRANSITION SLAB 24"X60" TO 15"X59"



QUALITY CONTROL CHECKLIST

- ALL DIMENSIONS CORRECT.
- LIFTERS INSTALLED.
- OPENING CENTERED.
- REINFORCING CORRECT.
- SURFACE QUALITY ACCEPTABLE.
- TOP EDGES ROUNDED.
- ALL PATCHWORK ACCEPTABLE.

PRODUCT VIEW: RIGHT SIDE UP

PLANT: BEAVER DAM, KY.

WEIGHT: 1,460 LBS.

TOP SECTION JOINT: N/A

BASE SECTION JOINT: N/A

QC CHECK INITIALS:

CUSTOMER: CLEARY CONSTRUCTION, INC.

PROJECT: KYTC JEFFERSON CO. (251007)

STRUCTURE ID.: 5144+07 LT DBI-13S (SEC. P2)

SALES ORDER NO.: 25-1684

P.C.: T. RYAN

DRAWING: N. RICHARDS

DATE: 07/11/25

SCALE: NTS

PG. 1 of 1