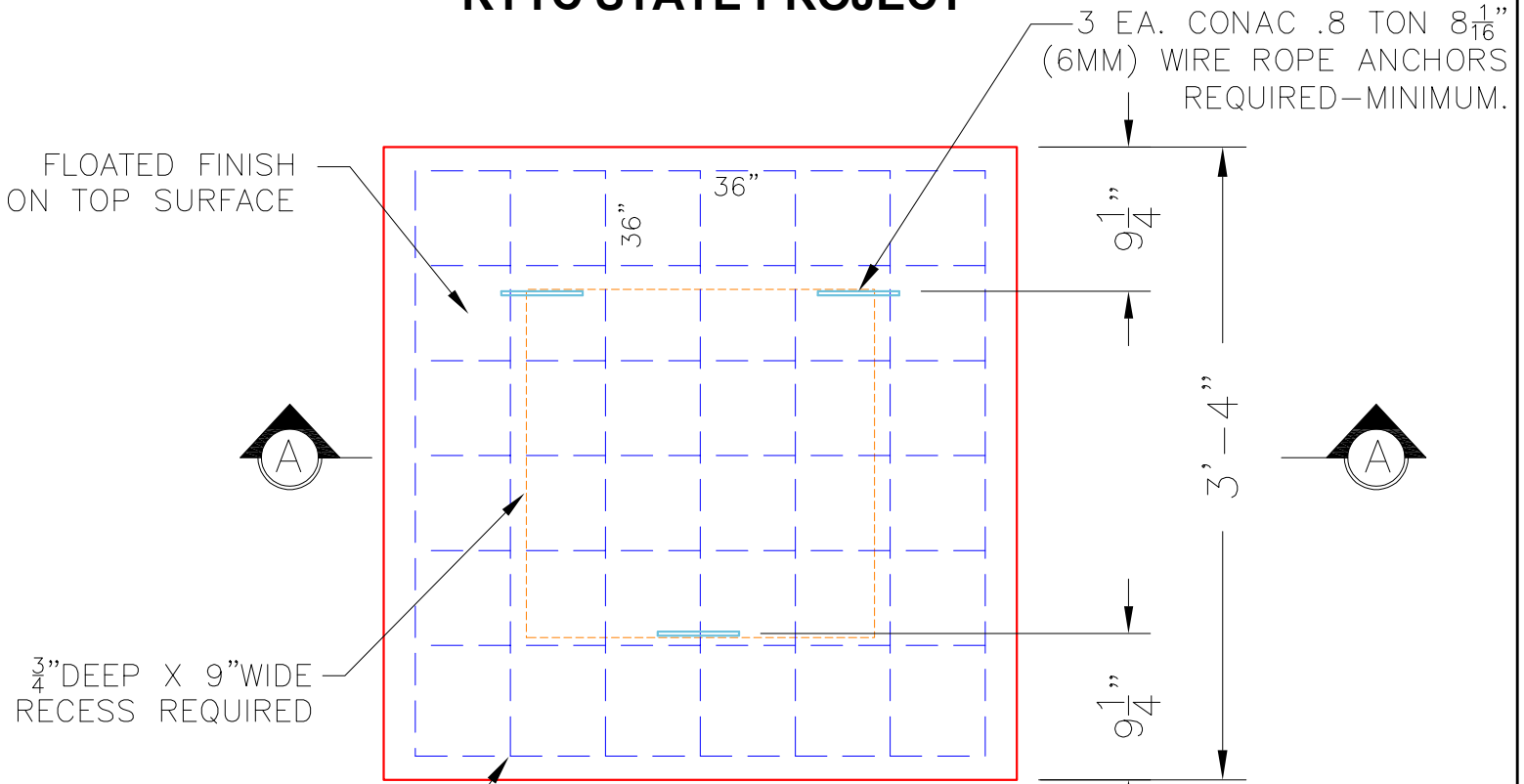


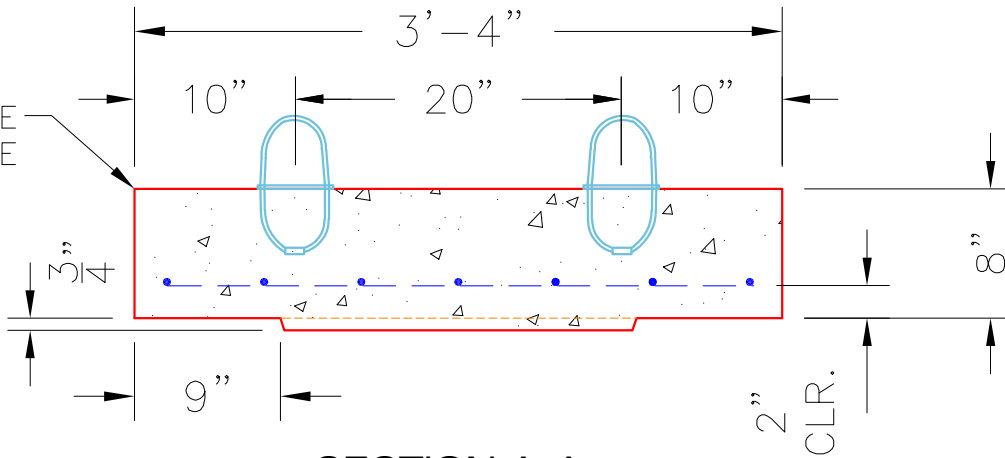
KYTC STATE PROJECT



PLAN VIEW

#4 BAR @ 6"
C/C E.W. (TYP.)

BULL NOSE
TOP EDGE



SECTION A-A

NOTES:

- CONCRETE: 4500 PSI @ 28 DAYS.
- MANUFACTURE TO KYTC SPECIFICATIONS.
- REINFORCING: #4 BAR @ 6" C/C E.W.-GRADE 60.
(BOTTOM LAYER ONLY)
- 3 EA. CONAC WIRE LOOP LIFTERS REQUIRED.
- KYTC CERTIFICATIONS REQUIRED.

#4 BAR CUT LIST
14 EA. @ 36"

PRODUCTION WORK ORDER

PRODUCT I.D.:
BX024024-08LD08S

DESCRIPTION:
JUNCTION BOX TOP SLAB 24" X 24" X 8"



QUALITY CONTROL CHECKLIST

- ALL DIMENSIONS CORRECT.
- LIFTERS INSTALLED.
- NO OPENINGS.
- REINFORCING CORRECT.
- 3/4" RECESS INSTALLED..
- TOP EDGE ROUNDED.
- ANY PATCHWORK ACCEPTABLE.

PRODUCT VIEW: RIGHT SIDE UP

PLANT: BEAVER DAM, KY.

WEIGHT: 1,121 LBS.

TOP SECTION JOINT: NOT REQ'D.

BOTTOM JOINT: 3/4" RECESS

QC CHECK INITIALS:

CUSTOMER: CLEARLY CONSTRUCTION, INC.

PROJECT: KYTC JEFFERSON CO. (251007)

STRUCTURE ID.: 5137+49 RT JB-A (SEC. P2)

SALES ORDER NO.: 25-1684

P.C.: T. RYAN

DRAWING: N. RICHARDS

DATE: 07/11/25

SCALE: NTS

PG. 1 of 1