

Job Name: 25-1684 P3 KYTC Jefferson Co. Call 200 (251007)
 Job Location: I-264 Louisville, Ky.
 Contractor: Cleary Construction, Inc.

Plant: Beaver Dam, Ky.
 1/14/2026 9:49:32 AM

Tech: J. Coppage
 PC: J. Jarvis



Structure ID: 5116+07 JB-A

P2 BX3660-8LD8S

BX FLAT LID 8inW SOLID

- P2) 36" x 60" - BX FLAT LID 8inW SOLID - 8"
- P1) 36" x 60" - BOX BASE 8inW, 8inF - 48"
- 1) 36" x 60" - Conseal CS-102 1.00"
- 2) Hole - 46

2653 lb
 7639 lb
 0 lb
 0 lb

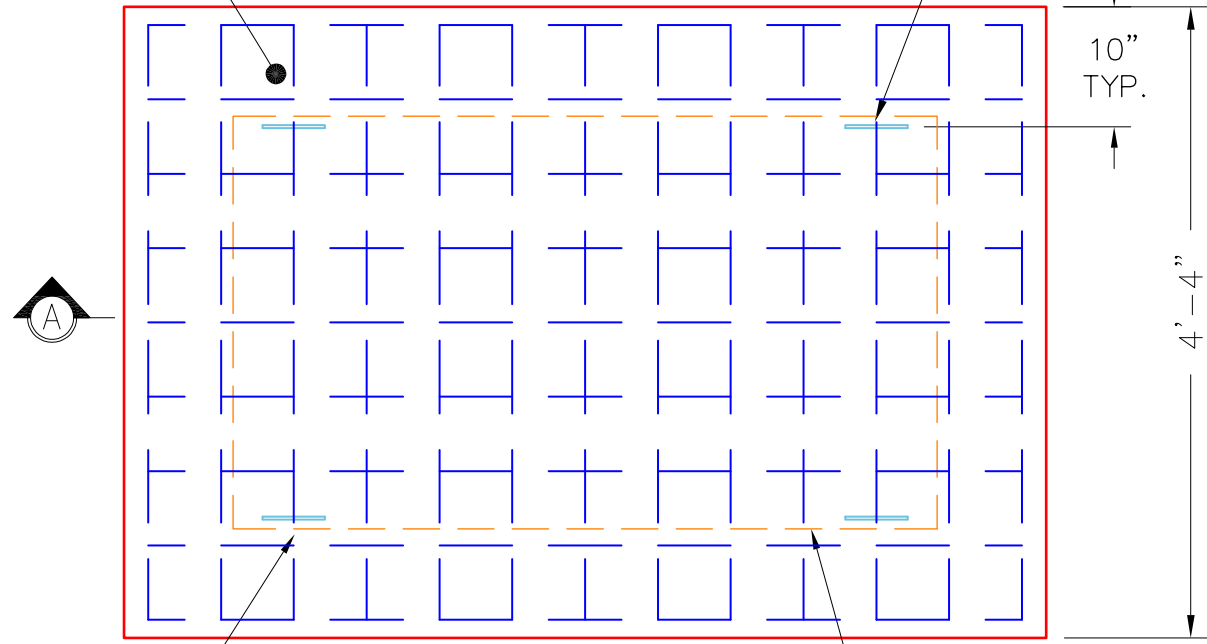
 Structure Total: 10292 lb

Structure Notes:
 -KYTC STATE PROJECT 251007
 -REINFORCING: #5 BAR @ 12" C/C E.W. (TYP.)
 -CS-102 BUTYL REQUIRED (SUPPLIED BY ICAST).
 -KYTC CERTIFICATIONS REQUIRED.

FLOATED FINISH
 ON TOP SURFACE

****KYTC CERTS REQUIRED****

4 EA. CONAC .8 TON 8¹/₁₆"
 (6MM) WIRE ROPE ANCHORS
 REQUIRED—MINIMUM.

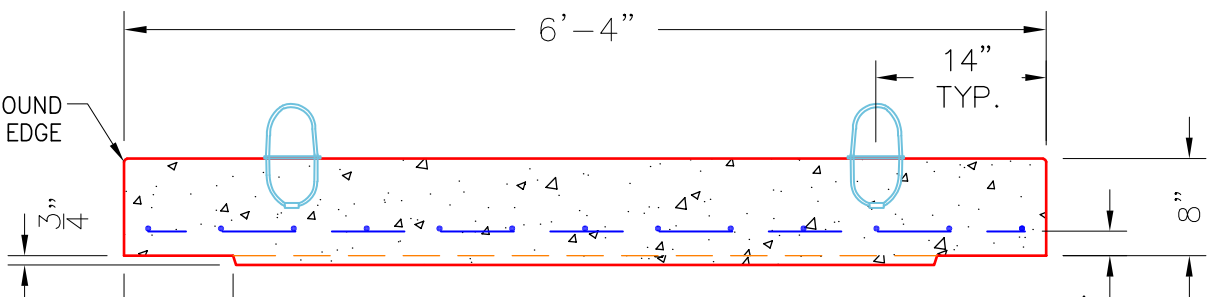


#4 BAR @ 6"
 C/C E.W. (TYP.)

(PLAN VIEW)

3/4" DEEP X 9" WIDE
 RECESS REQUIRED

ROUND
 TOP EDGE



(SECTION A-A)

NOTES:

- CONCRETE: 4500 PSI @ 28 DAYS.
- MANUFACTURE TO KYTC SPECIFICATIONS.
- REINFORCING: #4 BAR @ 6" C/C E.W.—GRADE 60.
 (BOTTOM LAYER ONLY)
- 4 EA. CONAC WIRE LOOP LIFTERS REQUIRED.

#4 BAR CUT LIST
 9 EA. @ 72"
 13 EA. @ 48"

Coating (Int): Coating (Ext):	Seam Up: Flat Seam Dn: Flat	Wall Thickness: 8"	Height (Ext): 8"	Weight (Net): 2653 lb Volume (Net): 0.68cu.yd
----------------------------------	--------------------------------	--------------------	------------------	--