

Job Name: 25-1684 P3 KYTC Jefferson Co. Call 200 (251007)  
 Job Location: I-264 Louisville, Ky.  
 Contractor: Cleary Construction, Inc.

Plant: Beaver Dam, Ky.  
 1/14/2026 9:49:30 AM

Tech: J. Coppage  
 PC: J. Jarvis



**Structure ID: 5116+07 JB-A - B**

**P2 BX3648\_08LD08**

**CB FLAT TOP 8"W SOLID**

- P2) 36" x 48" - CB FLAT TOP 8"W SOLID - 8"
- P1) 36" x 48" - BOX BASE 8inW, 8inF - 48"
- 1) 36" x 48" - Conseal CS-102 1.00"
- 2) Hole - 46

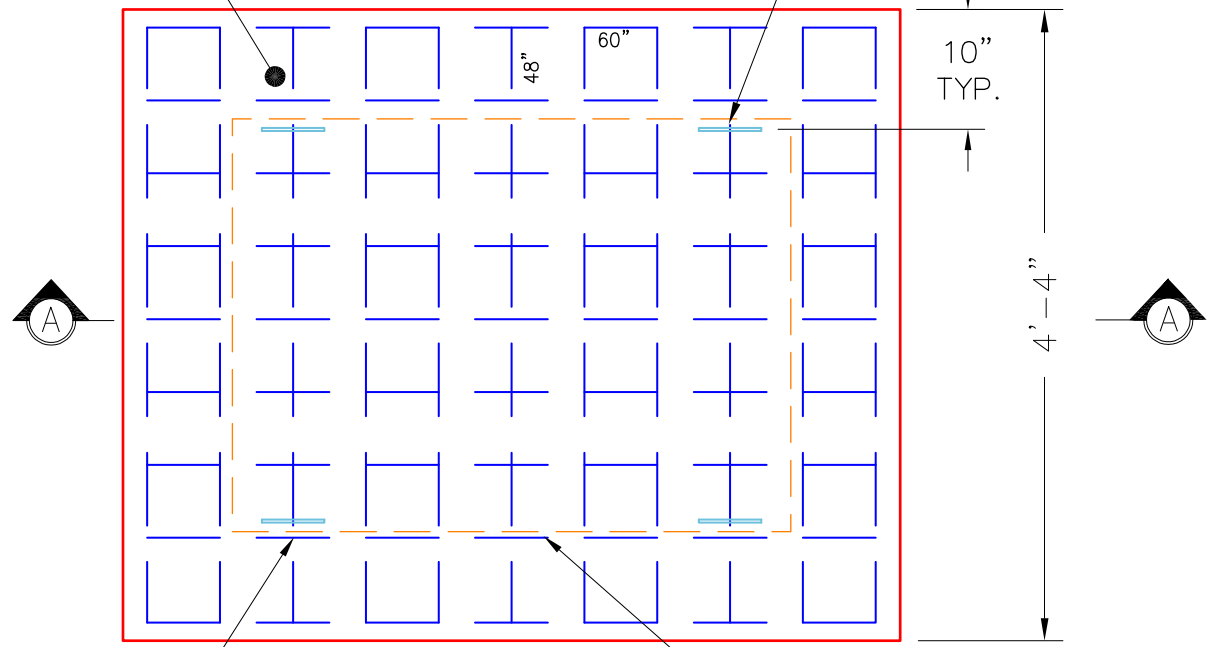
2234 lb  
 6447 lb  
 0 lb  
 0 lb  
 -----  
 Structure Total: 8681 lb

**Structure Notes:**  
 -KYTC STATE PROJECT 251007  
 -REINFORCING: #5 BAR @ 12" C/C E.W. (TYP.)  
 -CS-102 BUTYL REQUIRED (SUPPLIED BY ICAST).  
 -KYTC CERTIFICATIONS REQUIRED.

FLOATED FINISH ON TOP SURFACE

**\*\*KYTC CERTS REQUIRED\*\***

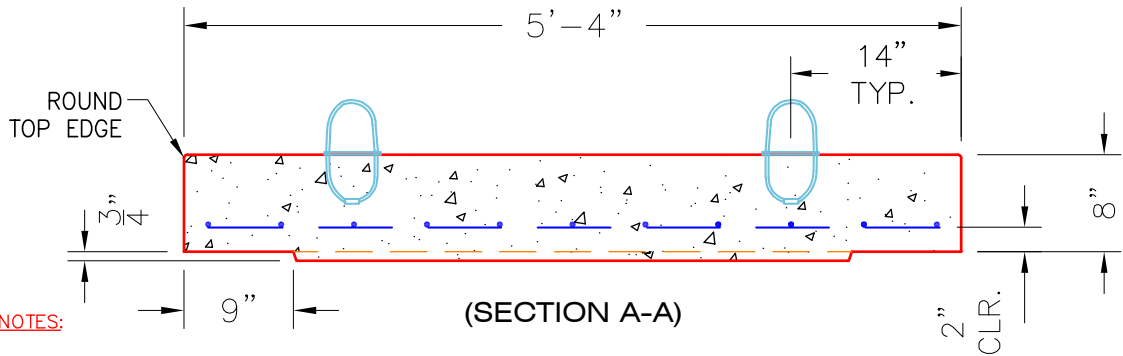
4 EA. CONAC .8 TON  $8\frac{1}{16}$ " (6MM) WIRE ROPE ANCHORS REQUIRED - MINIMUM.



#4 BAR @ 6" C/C E.W. (TYP.)

(PLAN VIEW)

$\frac{3}{4}$ " DEEP X 9" WIDE RECESS REQUIRED



- NOTES:**
- CONCRETE: 4500 PSI @ 28 DAYS.
  - MANUFACTURE TO KYTC SPECIFICATIONS.
  - REINFORCING: #4 BAR @ 6" C/C E.W. - GRADE 60. (BOTTOM LAYER ONLY)
  - 4 EA. CONAC WIRE LOOP LIFTERS REQUIRED.

**#4 BAR CUT LIST**  
 9 EA. @ 60"  
 11 EA. @ 48"

Coating (Int): Coating (Ext):	Seam Up: Flat Seam Dn: Flat	Wall Thickness: 8"	Height (Ext): 8"	Weight (Net): 2234 lb Volume (Net): 0.57cu.yd
----------------------------------	--------------------------------	--------------------	------------------	--