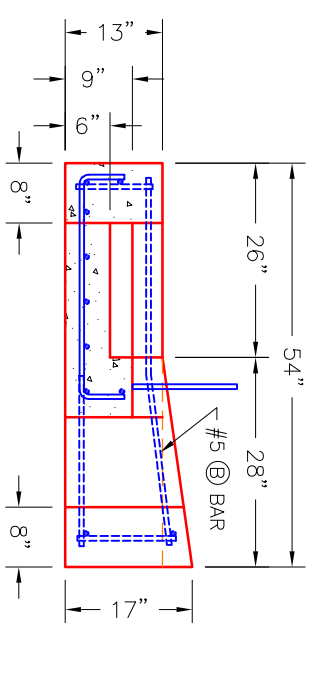
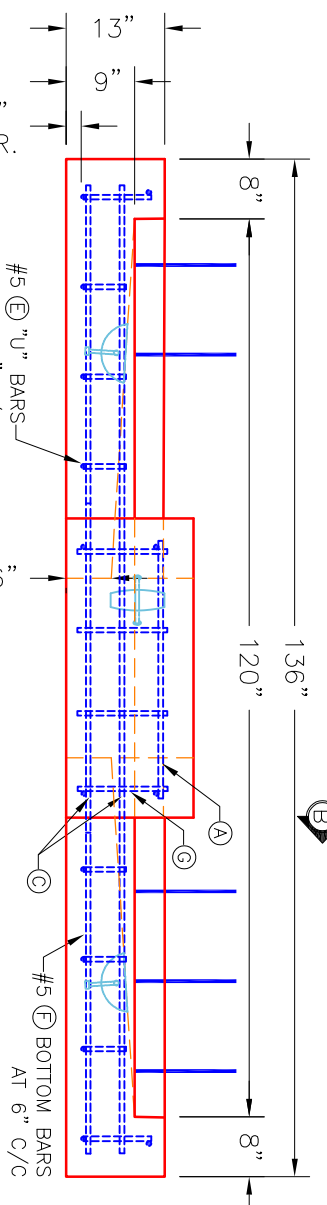
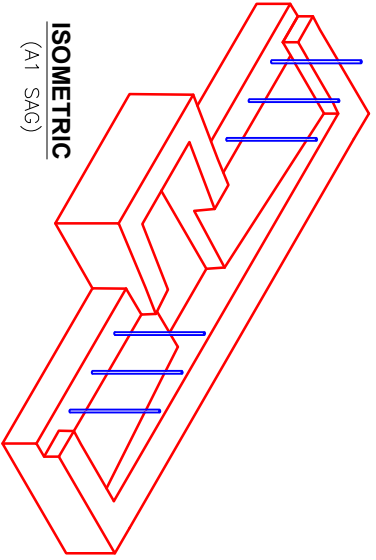
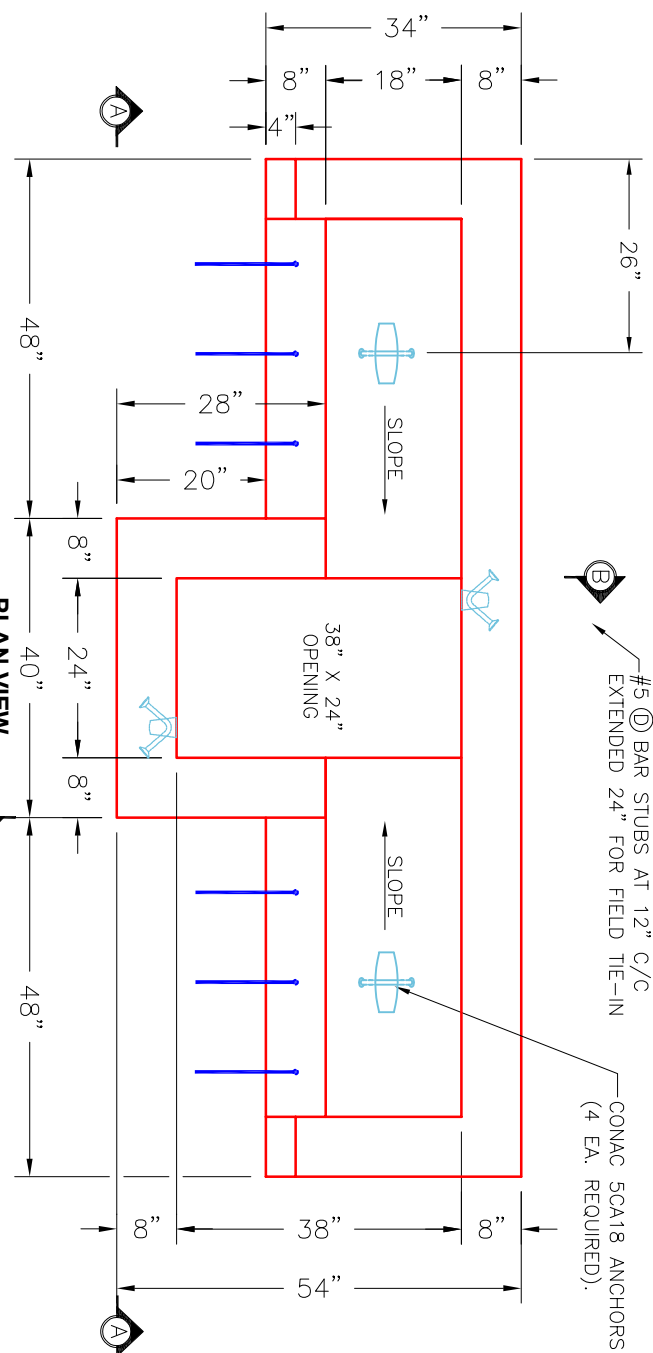


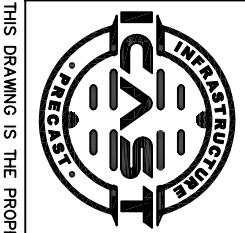
KYTC STATE PRODUCT

REINFORCING CUT LIST					
BAR	QTY.	MATERIAL	LENGTH	SHAPE	TOTAL WEIGHT
A	3	#5 BAR	34"	STR.	9 LBS.
B	2	#5 BAR	48"	STR.	8 LBS.
C	3	#5 BAR	132"	STR.	34 LBS.
D	6	#5 1" BAR	30"	BENT	44 LBS.
E	10	#5 "U" BAR	42"	BENT	30 LBS.
F	5	#5 BAR	100"	STR.	44 LBS.
G	8	#5 BAR	12"	STR.	8 LBS.



- ~NOTES:
1. CONCRETE: 4,500 PSI KYTC APPROVED.
 2. REINFORCING: #5 BAR-SEE CHART (GRADE 60)
 3. REINFORCING BARS TO BE TACK WELDED OR TIED.
 4. LIFTING ANCHOR POCKETS TO BE GROUTED AFTER SETTING BY CONTRACTOR.
 5. DRAWING TO BE USED IN CONJUNCTION WITH KYTC STD. DRAWINGS RDB-230-09, RDB-231-11, RDB-240-02, AND THE STANDARD SPECIFICATIONS FOR ROAD AND BRIDGE CONSTRUCTION.
 6. TOP PHASE CAN BE SUPPLIED AS RIGHT HAND, LEFT HAND & SAG. "A" DESIGNATES SAG & "B" DESIGNATES GRADE CONDITION. "1" DESIGNATES REBAR STUBS ON ONE SIDE AND "2" DESIGNATES REBAR STUBS ON BOTH SIDES AS SHOWN.

PRODUCTION WORK ORDER		DESCRIPTION: KYTC MBI A1 TYPE 9 10' TOP PHASE (SAG)	
PRODUCT I.D.: CMBBIT9-A1SAG	PRODUCT VIEW: RIGHT SIDE UP	CUSTOMER: CLEARY CONSTRUCTION, INC.	
PLANT: BEAVER DAM, KY.	WEIGHT: 4,000 LBS.	PROJECT: JEFFERSON CO. (251007)	
TOP SECTION JOINT: N/A	BOTTOM SECTION JOINT: SHIP-LAP GROOVE	STRUCTURE I.D.: 18+23 MBI A1 (SEC. P2)	
QC CHECK INITIALS:	PC: J. JARVIS	SALES ORDER NO.: 25-1684	
	DRAWING: N. RICHARDS	DATE: 12/12/25	
	SCALE: NTS	PG. 1 of 1	



- QUALITY CONTROL CHECKLIST
- ALL DIMENSIONS CORRECT.
 - LIFTERS INSTALLED.
 - CASTING AT CORRECT LOCATION.
 - REINFORCING CORRECT.
 - LIGHT BRUSH FINISH ACCEPTABLE.
 - KYTC STANDARD THROAT CORRECT.
 - ALL PATCHWORK ACCEPTABLE.

THIS DRAWING IS THE PROPERTY OF INFRASTRUCTURE PRECAST, INC. ANY USE OR DUPLICATION OF THIS DRAWING WITHOUT PRIOR AUTHORIZATION IS STRICTLY PROHIBITED.