

Job Name: 25-1675 - Campbellville Middle School Ph 2
Job Location: Campbellville, KY 72718
Contractor: Rising Sun Development Company

PC: J. Jarvis
 TECH: J. Coppage
 Plant: Beaver Dam, KY



Structure ID: 6
 Spec: Storm
 Type: STM.MH
 Size: 48"

Rim: 808.4'
 Invert: 799.64'
 Rim to Invert: 8.76'

Sump: 2.55"
 Floor (Top): 799.428"
 Floor Height: 6"

Floor (Bot): 798.928'
 Overall Height: 9.417'
 Slack: 0.67"

- Structure Notes:**
1. PER ASTM C-478 SPECIFICATIONS
 2. CONCRETE: 4,500 PSI AT 28 DAYS
 3. REINFORCEMENT: PER ASTM A615
 4. NO STORM INVERT
 5. STEPS AT 91 DEGREES
 6. HOE MCB-315-B FRAME & BAR GRATE SUPPLIED BY ICAST

STRUCTURE SUMMARY:

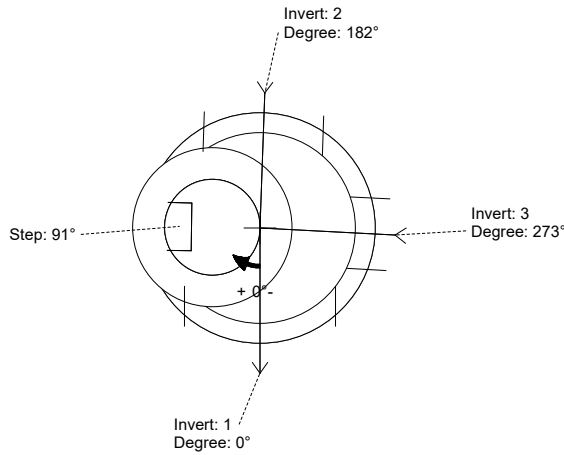
- P4) 24" - CASTING HEIGHT - 7"
- P3) 24" - GRADE RING F/F - 4"
- P2) 48" - ECC CONE w/ 24" HOLE F/G - 36"
- P1) 48" - MH BASE T/n - 60"

1) CASTING - HOE MCB-315-B Fr./Bar Grate

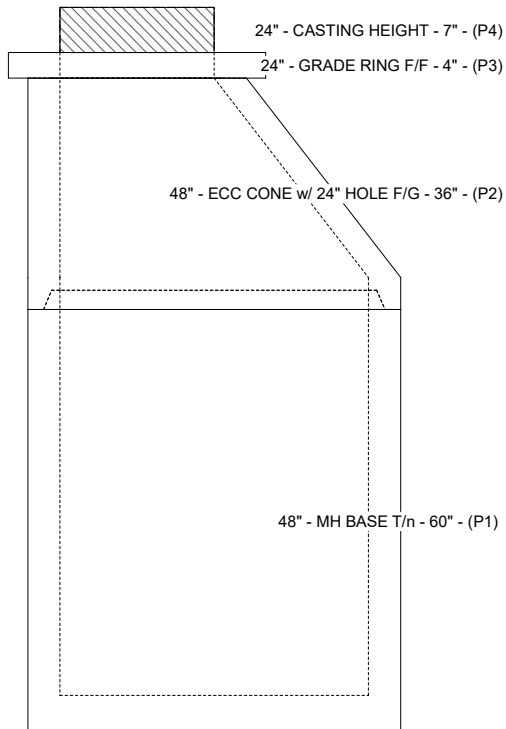
- 1) 48" - Conseal CS-102 1.00"
- 1) Hole - 38
- 1) Hole - 30
- 1) Hole - 18
- 8) MH Step ML-10-TDS-NCR - 10"

0 lb
 270 lb
 3000 lb
 4563 lb
 255 lb
 0 lb
 0 lb
 0 lb
 0 lb
 0 lb

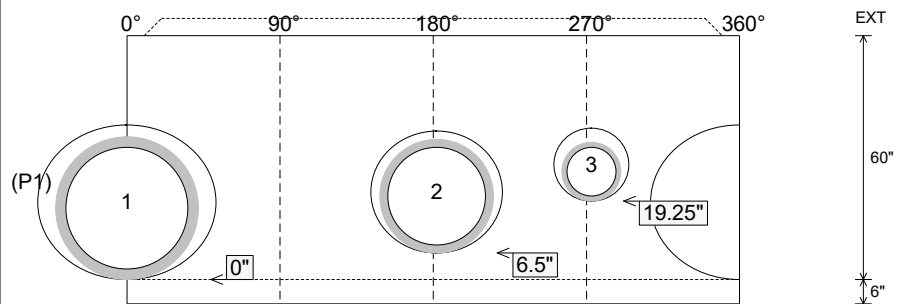
 Structure Total: 8088 lb



Position	Elev	Angle	Pipe	Pipe OD	Hole	Connector	Up (")	Ref
Rim	808.4'							
Reducer								
Invert 1	799.64'	0°	30" ADS N-12	35.1"	38"	Hole 38	0"	P1
Invert 2	800.14'	182°	24" ADS N-12	28"	30"	Hole 30	6.5"	P1
Invert 3	801.14'	273°	12" ADS N-12	14.5"	18"	Hole 18	19.25"	P1
Invert 4								
Invert 5								
Invert 6								
Invert 7								
Invert 8								



Cast (Int. Dim.) - Interior Dimensions



Submittal Drawing
 4/23/2026 1:09:23 PM

SUBMITTAL
 APPROVED BY: