

Job Name: 25-1675 - Campbellville Middle School Ph 2
Job Location: Campbellville, KY 72718
Contractor: Rising Sun Development Company

PC: J. Jarvis
 TECH: J. Coppage
 Plant: Beaver Dam, KY



Structure ID: 4
 Spec: Storm
 Type: STM.MH
 Size: 48"

Rim: 809.78'
 Invert: 801.98'
 Rim to Invert: 7.8'

Sump: 2"
 Floor (Top): 801.813'
 Floor Height: 6"

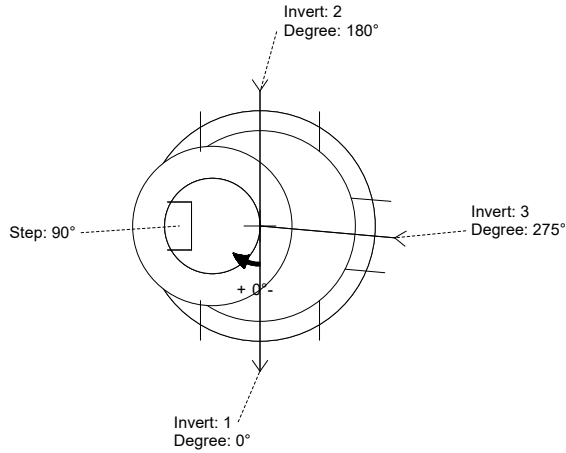
Floor (Bot): 801.313'
 Overall Height: 8.417'
 Slack: 0.6"

Structure Notes:

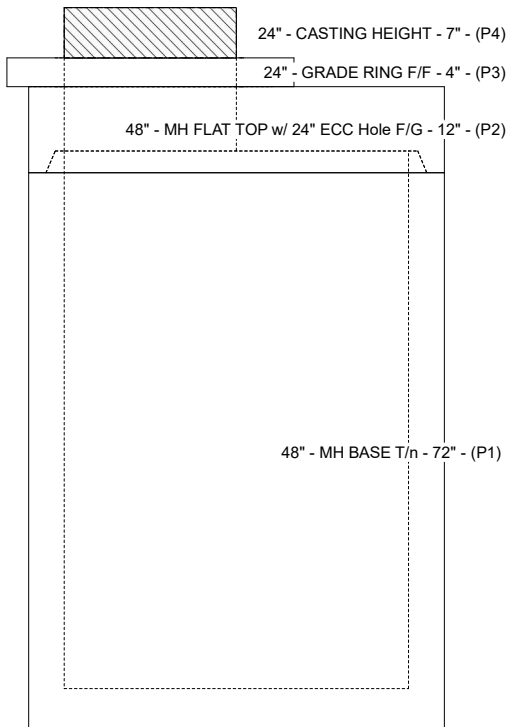
- PER ASTM C-478 SPECIFICATIONS
- CONCRETE: 4,500 PSI AT 28 DAYS
- REINFORCEMENT:
 - FLAT LID: #4 BAR @ 10" C.C. E.W. (GRADE 60)
 - BASE: PER ASTM A615
- NO STORM INVERT
- STEPS AT 90 DEGREES
- HOE MCB-315-B FRAME & BAR GRATE SUPPLIED BY ICAST

STRUCTURE SUMMARY:

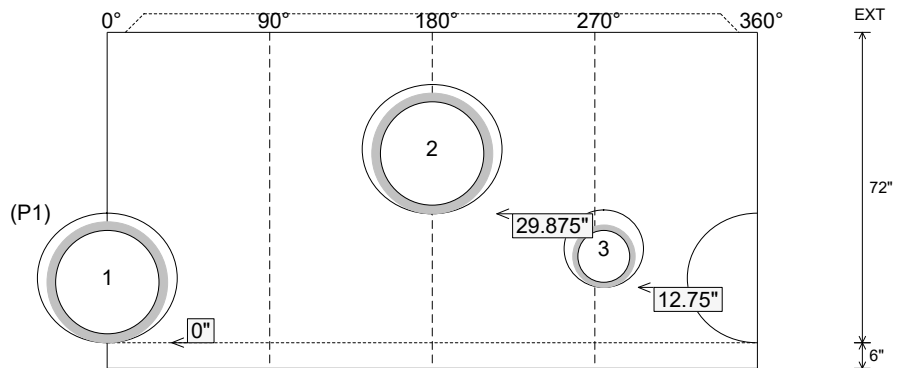
P4) 24" - CASTING HEIGHT - 7"	0 lb
P3) 24" - GRADE RING F/F - 4"	270 lb
P2) 48" - MH FLAT TOP w/ 24" ECC Hole F/G - 12"	1561 lb
P1) 48" - MH BASE T/n - 72"	5619 lb
1) CASTING - HOE MCB-315-B Fr./Bar Grate	255 lb
1) 48" - Conseal CS-102 1.00"	0 lb
2) Hole - 30	0 lb
1) Hole - 18	0 lb
6) MH Step ML-10-TDS-NCR - 10"	0 lb
Structure Total:	7705 lb



Position	Elev	Angle	Pipe	Pipe OD	Hole	Connector	Up (L)	Ref
Rim	809.78'							
Reducer								
Invert 1	801.98'	0°	24" ADS N-12	28"	30"	Hole 30	0"	P1
Invert 2	804.47'	180°	24" ADS N-12	28"	30"	Hole 30	29.875"	P1
Invert 3	802.98'	275°	12" ADS N-12	14.5"	18"	Hole 18	12.75"	P1
Invert 4								
Invert 5								
Invert 6								
Invert 7								
Invert 8								



Cast (Int. Dim.) - Interior Dimensions



Submittal Drawing
 4/23/2026 1:09:23 PM

SUBMITTAL
 APPROVED BY: