

Job Name: 25-1675 - Campbellsville Middle School Ph 2
 Job Location: Campbellsville, KY 72718
 Contractor: Rising Sun Development Company

Plant: Beaver Dam, KY
 4/23/2026 3:19:43 PM

Tech: J. Coppage
 PC: J. Jarvis



Structure ID: 4

P1 MH048BA72

MH BASE T/n

- P4) 24" - CASTING HEIGHT - 7"
- P3) 24" - GRADE RING F/F - 4"
- P2) 48" - MH FLAT TOP w/ 24" ECC Hole F/G - 12"
- P1) 48" - MH BASE T/n - 72"
- 1) CASTING - HOE MCB-315-B Fr./Bar Grate
- 1) 48" - Conseal CS-102 1.00"
- 2) Hole - 30
- 1) Hole - 18
- 6) MH Step ML-10-TDS-NCR - 10"

0 lb
 270 lb
 1561 lb
 5619 lb
 255 lb
 0 lb
 0 lb
 0 lb
 0 lb

 Structure Total: 7705 lb

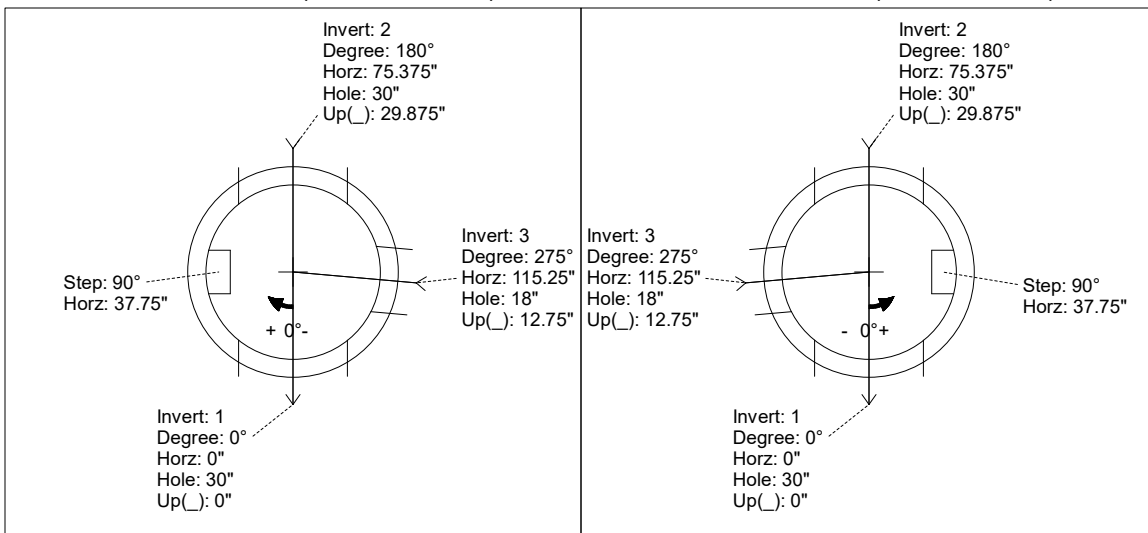
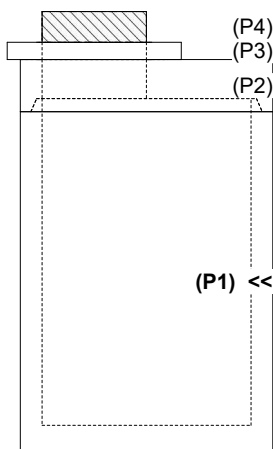
- Structure Notes:**
1. PER ASTM C-478 SPECIFICATIONS
 2. CONCRETE: 4,500 PSI AT 28 DAYS
 3. REINFORCEMENT: PER ASTM A615
 4. NO STORM INVERT
 5. STEPS AT 90 DEGREES
 6. HOE MCB-315-B FRAME & BAR GRATE SUPPLIED BY ICAST

Rim: 809.78' Rim to Invert: 7.8' Slack: 0.6" Sump: 2" Step Position: 90°

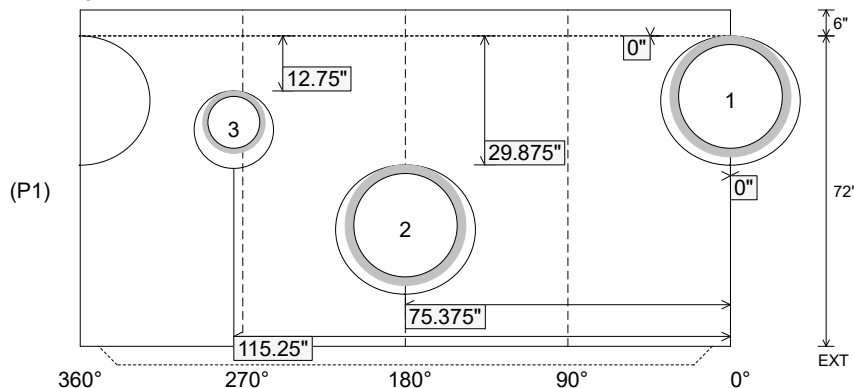
Position	Elev	Angle	Ext. (cw)	Pipe	Pipe OD	Connector	Hole	Horz Size	Up (↓)	Offset
Invert 1	801.98'	0°	0"	24" ADS N-12	28"	Hole 30	30"	32.406"	0"	0"
Invert 2	804.47'	180°	91.125"	24" ADS N-12	28"	Hole 30	30"	32.406"	29.875"	0"
Invert 3	802.98'	275°	139.25"	12" ADS N-12	14.5"	Hole 18	18"	18.451"	12.75"	0"
Invert 4										
Invert 5										
Invert 6										
Invert 7										
Invert 8										

RIGHT-SIDE UP VIEW (int. dimensions)

UPSIDE-DOWN VIEW (int. dimensions)



INSIDE WALL DIMENSIONS



Coating (Int):
 Coating (Ext):

Seam Up: Tongue
 Seam Dn: n/a

Wall Thickness: 5"
 Floor Height: 6"

Height (Int): 72"
 Height (Ext): 78"

Weight (Net): 5619 lb
 Volume (Net): 1.44cu.yd