

Job Name: 25-1675 - Campbellsville Middle School Ph 2
 Job Location: Campbellsville, KY 72718
 Contractor: Rising Sun Development Company

Plant: Beaver Dam, KY
 4/23/2026 3:20:40 PM

Tech: J. Coppage
 PC: J. Jarvis



Structure ID: 16

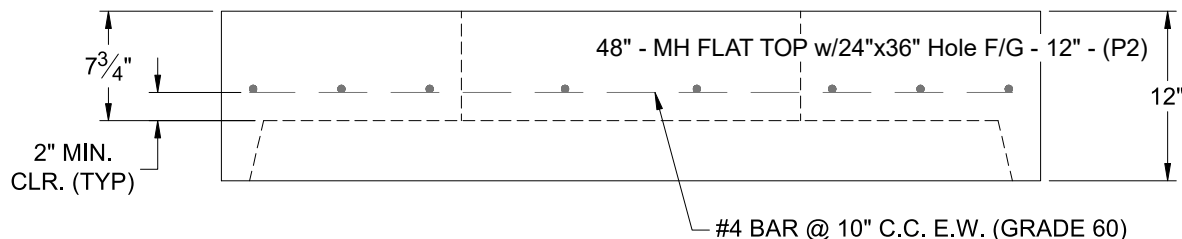
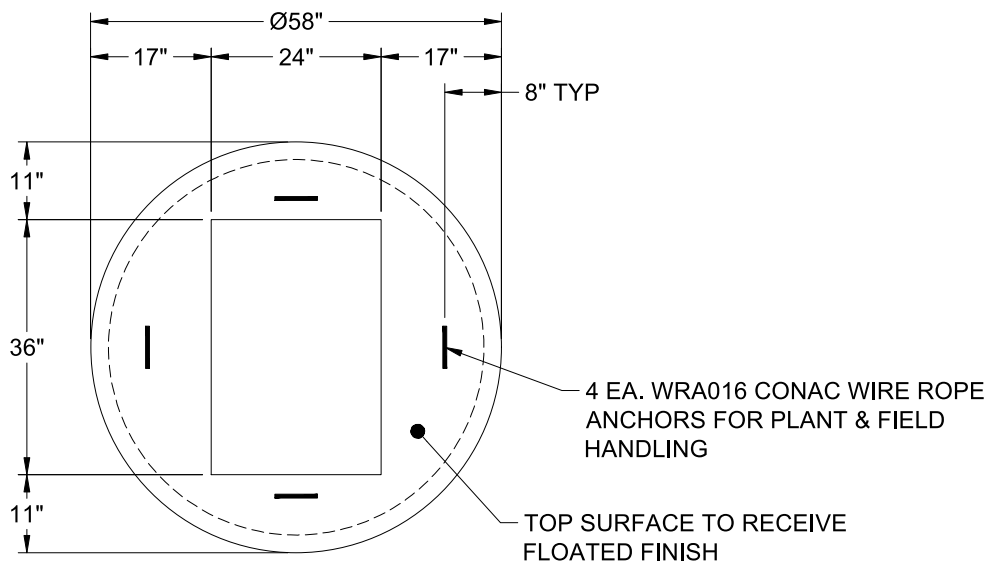
P2 MH048LD12-24X36RECT

MH FLAT TOP w/24"x36" Hole F/G

- P3) 24" x 36" - CASTING HEIGHT - 6"
- P2) 48" - MH FLAT TOP w/24"x36" Hole F/G - 12"
- P1) 48" - MH BASE Custom Ht T/n - 26"
- 1) CASTING - HOE 525 LV SET (F/G/H)
- 1) 48" - Conseal CS-102 1.00"
- 1) 24" x 36" - Conseal CS-102 1.00"
- 1) Hole - 20
- 2) MH Step ML-10-TDS-NCR - 10"

	0 lb
	1300 lb
	3011 lb
	442 lb
	0 lb
	0 lb
	0 lb
	0 lb
Structure Total:	4753 lb

- Structure Notes:
1. PER ASTM C-478 SPECIFICATIONS
 2. CONCRETE: 4,500 PSI AT 28 DAYS
 3. REINFORCEMENT: #4 BAR @ 10" C.C. E.W. (GRADE 60) - 2" MIN. REBAR CLEARANCE (TYP)
 4. HOE-525-LV FRAME, L-VANE GRATE, & CURB HOOD SUPPLIED BY ICAST
 5. LIFTERS: 4 EA. WRA016 CONAC WIRE ROPE ANCHORS FOR PLANT & FIELD HANDLING
 6. TOP SURFACE TO RECEIVE FLOATED FINISH



Coating (Int):
 Coating (Ext):

Seam Up: Flat
 Seam Dn: Groove

Wall Thickness: 5"

Height (Ext): 12"

Weight (Net): 1300 lb
 Volume (Net): 0.46cu.yd