

Job Name: 25-1670 Closplint Cluster Sewer System
 Job Location: Baxter, KY
 Contractor: Highland Services

Plant: Beaver Dam

Tech: J. Coppage

11/17/2025 9:11:13 AM

PC: T. Ryan



Structure ID: SSMH

P2 MH048LD12ECC

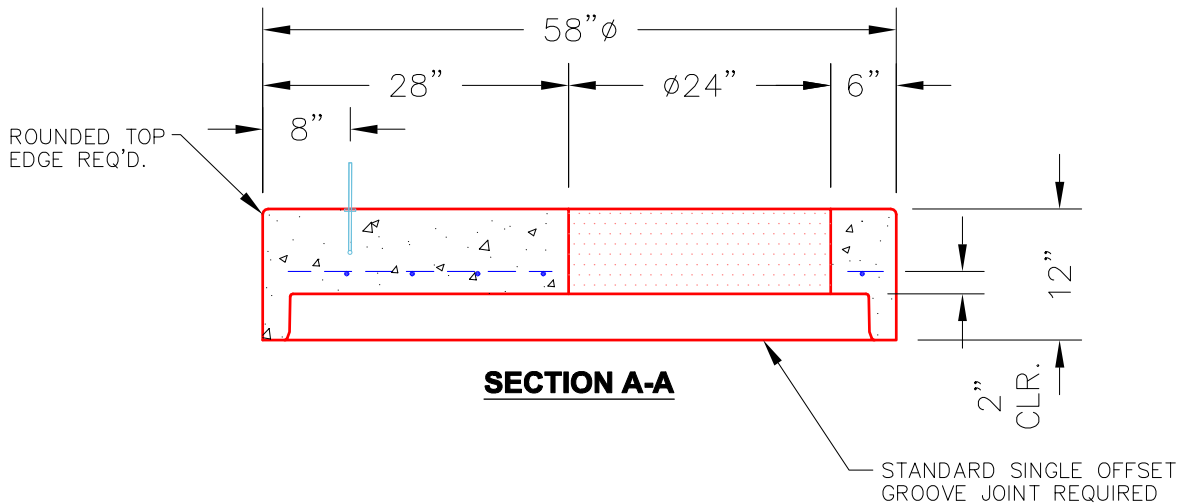
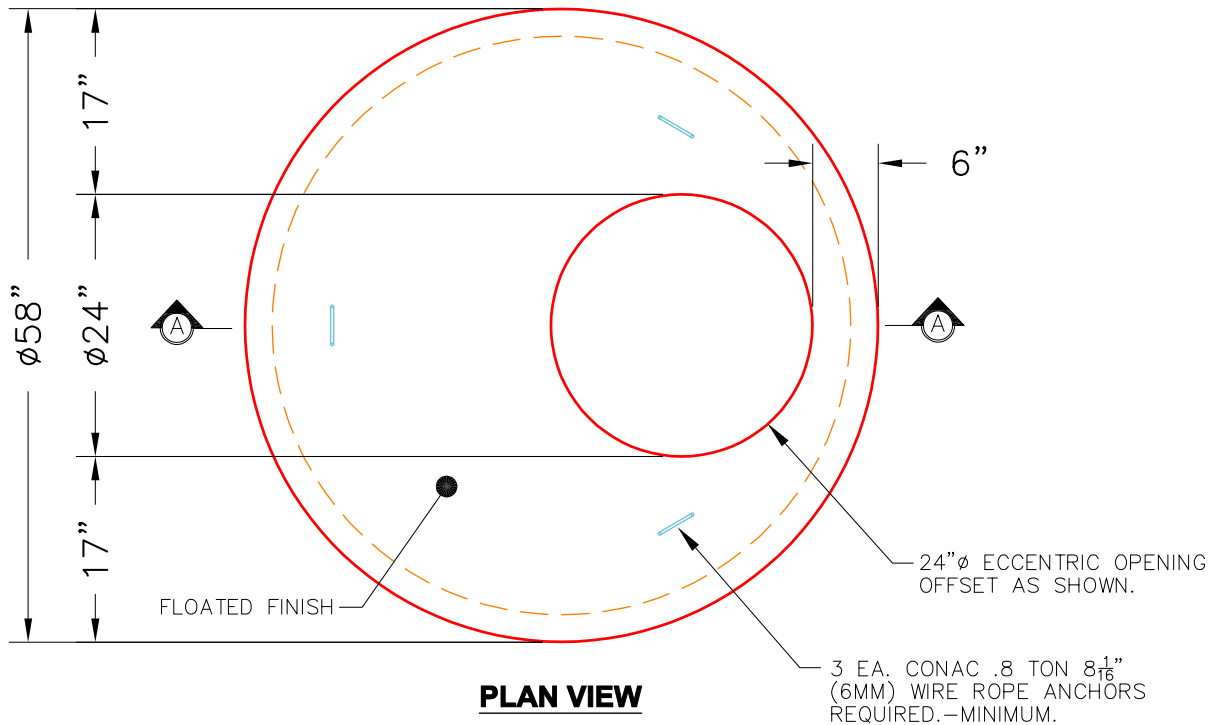
MH FLAT TOP w/ 24" ECC Hole

- P3) 24" - CASTING HEIGHT - 7"
- P2) 48" - MH FLAT TOP w/ 24" ECC Hole - 12"
- P1) 48" - MH BASE w/FLANGE - 24"
- 1) 48" - MH INVERT CHANNEL - FULL HEIGHT
- 1) JOINT WRAP - 12" WD x 048" MAC WRAP
- 1) 48" - Conseal CS-102 1.00" (Double)
- 2) PSX - 12-08 NYLO
- 1) MH Step ML-10-TDS-NCR - 10"

	0 lb
	1561 lb
	4468 lb
	1440 lb
	0 lb
	0 lb
	16 lb
	0 lb
Structure Total:	7485 lb

Structure Notes:

1. JR HOE MC-315 SAN PROVIDED BY ICAST.
2. PER ASTM C478 SPECIFICATIONS.
3. CONCRETE = 4,000 PSI AT 28 DAYS.
4. REINFORCING PER ASTM A615 (GRADE 60).
 - CONE (As .12)
 - RISER/WALLS (As .12)
 - FLOOR (As .31) #5 BARS AT 12" C.C.E.W.



Coating (Int): Coating (Ext):	Seam Up: Flat Seam Dn: Groove	Wall Thickness: 5"	Height (Ext): 12"	Weight (Net): 1561 lb Volume (Net): 0.42cu.yd
----------------------------------	----------------------------------	--------------------	-------------------	--