

Job Name: 25-1670 Closplint Cluster Sewer System  
 Job Location: Baxter, KY  
 Contractor: Highland Services

Plant: Beaver Dam  
 11/17/2025 9:09:35 AM

Tech: J. Coppage  
 PC: T. Ryan



**Structure ID: 7000 GAL SEPTIC TANK**

**P1 CVBVF**

**BOX BASE 6inW, 6inF, Variable Ht**

- P2) 108" x 192" - CB FLAT TOP 6"W w/(2) 18" HOLES - 8"
- P1) 108" x 192" - BOX BASE 6inW, 6inF, Variable Ht - 96"
- 1) JOINT WRAP - 0.065"x6"x50' CONSEAL CS212
- 1) JOINT WRAP PRIMER - CONSEAL CS-75 (1 gal.)
- 1) SECONDARY POUR
- 1) ASSEMBLY REQUIRED
- 2) PSX - 12-06 NYLO

16091 lb  
 42371 lb  
 0 lb  
 0 lb  
 0 lb  
 0 lb  
 16 lb  
 -----  
 Structure Total: 58478 lb

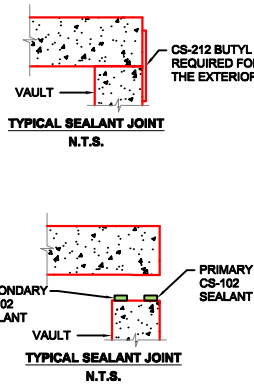
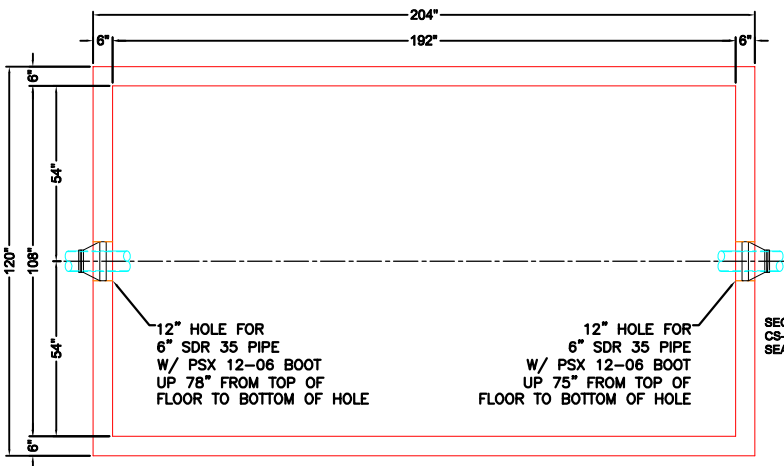
Structure Notes:

1. (CASTINGS PROVIDED BY OTHERS)
2. PER ASTM C913 SPECIFICATIONS.
3. CONCRETE = 4,500 PSI AT 28 DAYS.
4. REINFORCING PER ASTM A615 (GRADE 60).  
 TOP SLAB:  
 (As .62) #5 BARS AT 6" C.C.E.W.
- RISER/WALLS:  
 HORIZONTALS (As .68) #6 BARS AT 6" C.C.  
 VERTICALS (As .14) #4 BARS AT 12" C.C.
- FLOOR  
 LONG BAR (As .48) #5 BARS AT 8" C.C.  
 SHORT BAR (As .36) #5 BARS AT 10" C.C.

**FIRST POUR DRAWING**

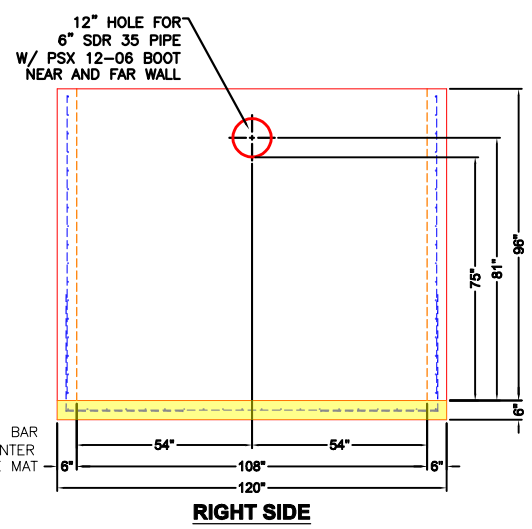
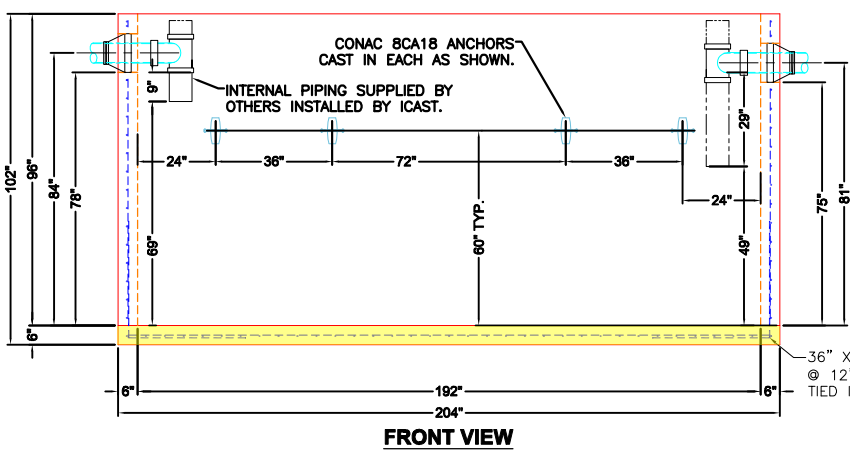
Rim: 1538.61' Rim to Invert: 2.17' Slack: 0.04" Sump: 78" Step Position:

Position	Elev	Angle	Ext. (cw)	Pipe	Pipe OD	Connector	Hole	Horz Size	Up (L)	Offset
Invert 1	1536.44'	0°	60"	6" PVC SDR35	6.25"	PSX 12-06 NYLO	12"	12"	75"	0"
Invert 2	1536.69'	180°	60"	6" PVC SDR35	6.25"	PSX 12-06 NYLO	12"	12"	78"	0"
Invert 3										
Invert 4										
Invert 5										
Invert 6										
Invert 7										
Invert 8										



GENERAL NOTES:

1. MANUFACTURED TO ASTM C-913 (LATEST REVISION).
2. CONCRETE: 4,500 PSI AT 28 DAYS.
3. REINFORCING:  
 HORIZONTALS #6 BAR @ 6" C-C  
 VERTICALS #4 BAR @ 12" C-C  
 PER ASTM A615 (GRADE 60).
4. WEIGHT:  
**FIRST POUR = 12,325 LBS**  
 SECOND POUR = 30,046 LBS  
 TOTAL = 42,371 LBS
5. CASTINGS: PROVIDED BY OTHERS.



Coating (Int): Coating (Ext):	Seam Up: Flat Seam Dn: n/a	Wall Thickness: 6" Floor Height: 6"	Height (Int): 96" Height (Ext): 102"	Weight (Net): 42371 lb Volume (Net): 10.82cu.yd
----------------------------------	-------------------------------	--	---	--

Job Name: 25-1670 Closplint Cluster Sewer System  
 Job Location: Baxter, KY  
 Contractor: Highland Services

Plant: Beaver Dam  
 11/17/2025 9:09:35 AM

Tech: J. Coppage  
 PC: T. Ryan



**Structure ID: 7000 GAL SEPTIC TANK**

**P1 CVBVF**

**BOX BASE 6inW, 6inF, Variable Ht**

- P2) 108" x 192" - CB FLAT TOP 6"W w/(2) 18" HOLES - 8"
- P1) 108" x 192" - BOX BASE 6inW, 6inF, Variable Ht - 96"
- 1) JOINT WRAP - 0.065"x6"x50' CONSEAL CS212
- 1) JOINT WRAP PRIMER - CONSEAL CS-75 (1 gal.)
- 1) SECONDARY POUR
- 1) ASSEMBLY REQUIRED
- 2) PSX - 12-06 NYLO

16091 lb  
 42371 lb  
 0 lb  
 0 lb  
 0 lb  
 0 lb  
 16 lb  
 -----  
 Structure Total: 58478 lb

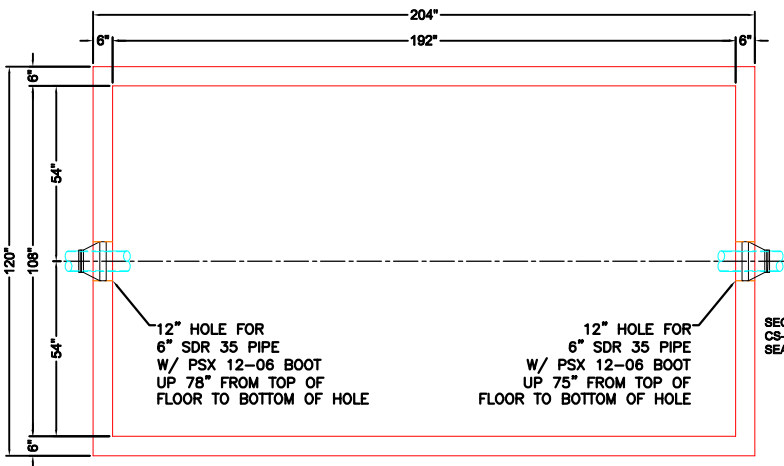
Structure Notes:

1. (CASTINGS PROVIDED BY OTHERS)
2. PER ASTM C913 SPECIFICATIONS.
3. CONCRETE = 4,500 PSI AT 28 DAYS.
4. REINFORCING PER ASTM A615 (GRADE 60).  
 TOP SLAB:  
 (As .62) #5 BARS AT 6" C.C.E.W.
- RISER/WALLS:  
 HORIZONTALS (As .68) #6 BARS AT 6" C.C.  
 VERTICALS (As .14) #4 BARS AT 12" C.C.
- FLOOR  
 LONG BAR (As .48) #5 BARS AT 8" C.C.  
 SHORT BAR (As .36) #5 BARS AT 10" C.C.

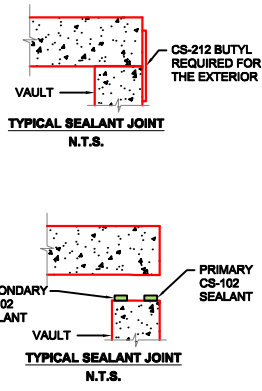
**SECOND POUR DRAWING**

Rim: 1538.61' Rim to Invert: 2.17' Slack: 0.04" Sump: 78" Step Position:

Position	Elev	Angle	Ext. (cw)	Pipe	Pipe OD	Connector	Hole	Horz Size	Up (L)	Offset
Invert 1	1536.44'	0°	60"	6" PVC SDR35	6.25"	PSX 12-06 NYLO	12"	12"	75"	0"
Invert 2	1536.69'	180°	60"	6" PVC SDR35	6.25"	PSX 12-06 NYLO	12"	12"	78"	0"
Invert 3										
Invert 4										
Invert 5										
Invert 6										
Invert 7										
Invert 8										

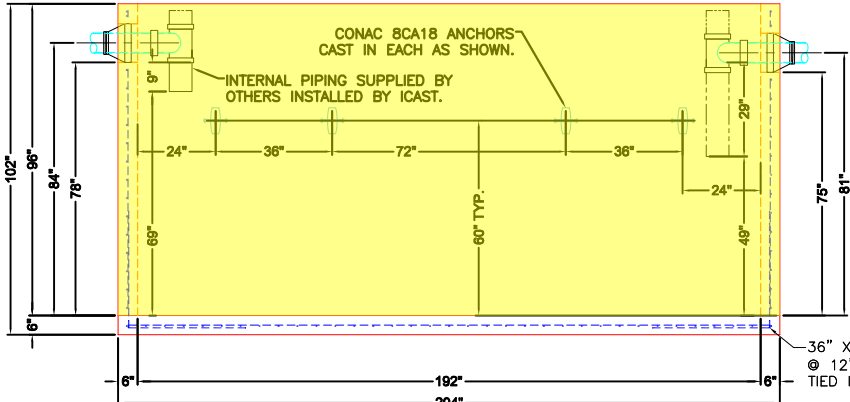


**TOP VIEW**

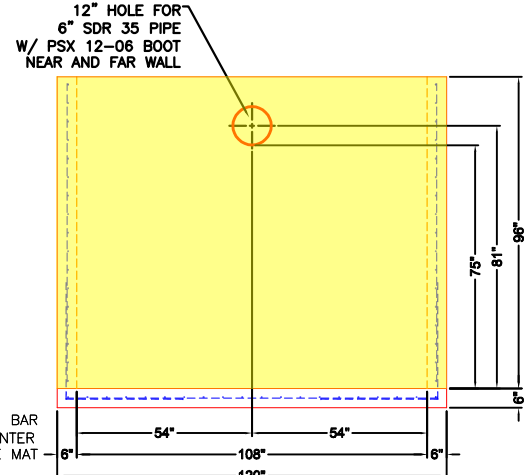


GENERAL NOTES:

1. MANUFACTURED TO ASTM C-913 (LATEST REVISION).
2. CONCRETE: 4,500 PSI AT 28 DAYS.
3. REINFORCING:  
 HORIZONTALS #6 BAR @ 6" C-C  
 VERTICALS #4 BAR @ 12" C-C  
 PER ASTM A615 (GRADE 60).
4. WEIGHT:  
 FIRST POUR = 12,325 LBS  
**SECOND POUR = 30,046 LBS**  
 TOTAL = 42,371 LBS
5. CASTINGS: PROVIDED BY OTHERS.



**FRONT VIEW**



**RIGHT SIDE**

Coating (Int): Coating (Ext):	Seam Up: Flat Seam Dn: n/a	Wall Thickness: 6" Floor Height: 6"	Height (Int): 96" Height (Ext): 102"	Weight (Net): 42371 lb Volume (Net): 10.82cu.yd
----------------------------------	-------------------------------	--	---	--