

Job Name: 25-1664 Springfield WWTP  
 Job Location: Springfield, TN  
 Contractor: Smith Contractors, Inc.

Plant: Beaver Dam

Tech: J. Coppage

2/2/2026 12:06:06 PM

PC: C. Goff



**Structure ID: SULPHUR-SSMH-2 5+18.88**

**P1 MH072BAVFX**

**MH BASE Custom Ht, w/XYPEX**

- P6) 24" - CASTING HEIGHT - 6"
- P5) 48" - ECC XYPEX CONE w/ 24" HOLE - 36"
- P4) 48" - MH RISER w/XYPEX - 72"
- P3) 48" - MH RISER w/XYPEX - 72"
- P2) 72" - XYPEX MH FT REDUCER 48" HOLE - 15"
- P1) 72" - MH BASE Custom Ht, w/XYPEX - 76"
- 1) JOINT WRAP - 0.065"x6"x50' CONSEAL CS212
- 1) JOINT WRAP PRIMER - CONSEAL CS-75 (1 gal.)
- 1) 72" - MH INVERT CHANNEL w/XYPEX - FULL HEIGHT
- 1) 72" - Conseal CS-102 1.00" (Double)
- 3) 48" - Conseal CS-102 1.00" (Double)
- 2) Kor-N-Seal2 - S206-36
- 446.38 SqFt) MASTERSEAL 610 - Two Coats [EXT]

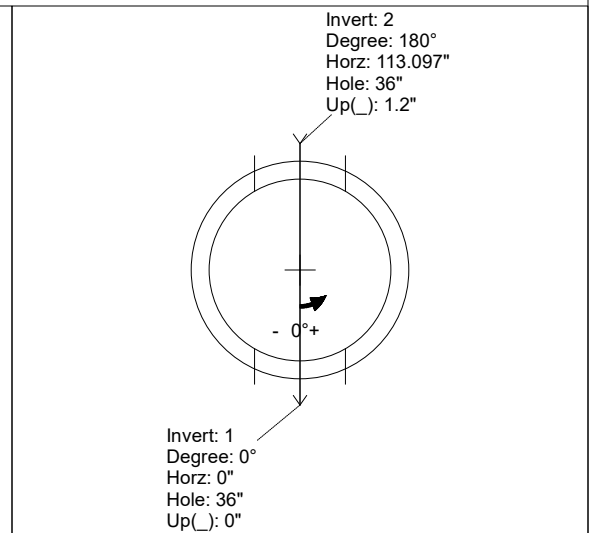
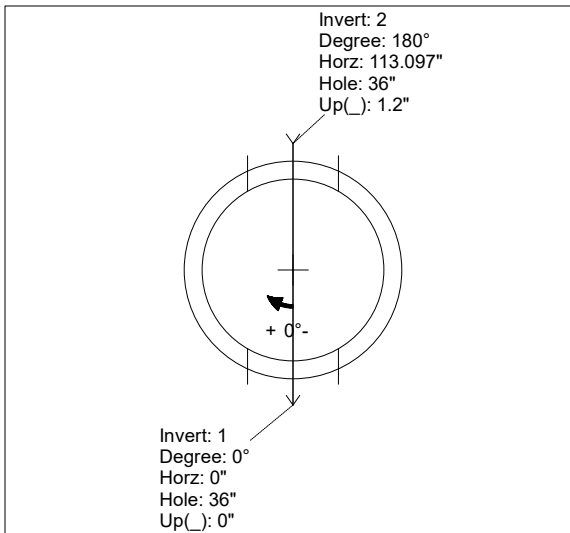
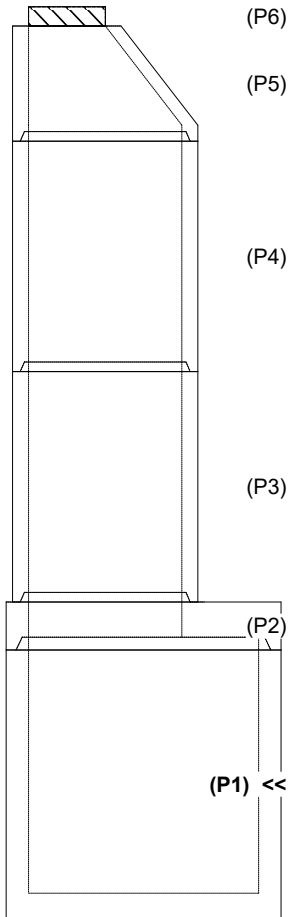
0 lb	<b>Structure Notes:</b> 1. JBS-1155 SANITARY BY ICAST. 2. PER ASTM C478 SPECIFICATIONS. 3. CONCRETE = 5,000 PSI AT 28 DAYS. 4. REINFORCING PER ASTM A615 (GRADE 60). - CONE (As .12) - TRANS. SLAB - AS SHOWN BY WINFORD PETRONE - RISER/WALLS (As .12) - FLOOR - AS SHOWN BY WINFORD PETRONE
2251 lb	
5030 lb	
5030 lb	
3864 lb	
13736 lb	
0 lb	
0 lb	
5422 lb	
0 lb	
0 lb	
13 lb	
0 lb	
-----	
Structure Total: 35346 lb	

Rim: 517.72' Rim to Invert: 22.87' Slack: 0.44" Sump: 3" Step Position:

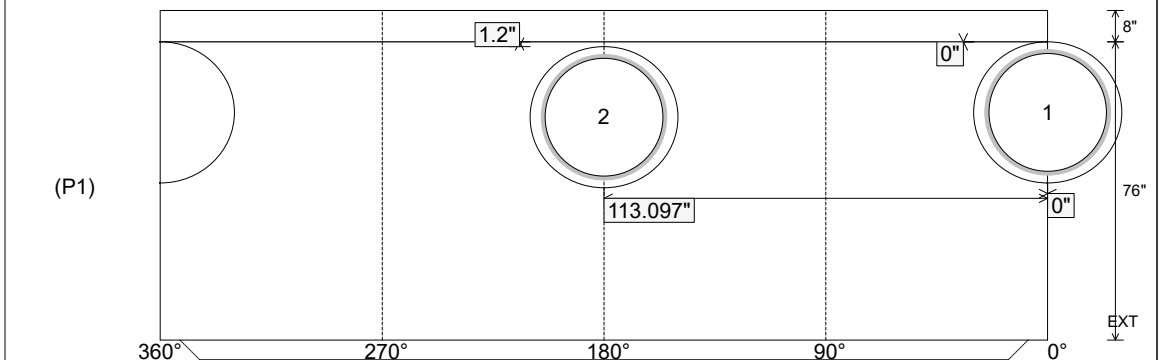
Position	Elev	Angle	Ext. (cw)	Pipe	Pipe OD	Connector	Hole	Horz Size	Up ( )	Offset
Invert 1	494.85'	0°	0"	30" DI	32"	Kor-N-Seal2 S206-36	36"	37.699"	0"	0"
Invert 2	494.95'	180°	135.088"	30" DI	32"	Kor-N-Seal2 S206-36	36"	37.699"	1.2"	0"
Invert 3										
Invert 4										
Invert 5										
Invert 6										
Invert 7										
Invert 8										

RIGHT-SIDE UP VIEW (int. dimensions)

UPSIDE-DOWN VIEW (int. dimensions)



INSIDE WALL DIMENSIONS



Coating (Int):  
 Coating (Ext): MASTERSEAL 610

Seam Up: Tongue  
 Seam Dn: n/a

Wall Thickness: 7"  
 Floor Height: 8"

Height (Int): 76"  
 Height (Ext): 84"

Weight (Net): 13736 lb  
 Volume (Net): 3.51cu.yd

Job Name: 25-1664 Springfield WWTP  
 Job Location: Springfield, TN  
 Contractor: Smith Contractors, Inc.

Plant: Beaver Dam

Tech: J. Coppage

2/2/2026 12:06:06 PM

PC: C. Goff



**Structure ID: SULPHUR-SSMH-2 5+18.88**

**P1 MH072BAVFX**

**MH BASE Custom Ht, w/XYPEX**

- P6) 24" - CASTING HEIGHT - 6"
- P5) 48" - ECC XYPEX CONE w/ 24" HOLE - 36"
- P4) 48" - MH RISER w/XYPEX - 72"
- P3) 48" - MH RISER w/XYPEX - 72"
- P2) 72" - XYPEX MH FT REDUCER 48" HOLE - 15"
- P1) 72" - MH BASE Custom Ht, w/XYPEX - 76"
- 1) JOINT WRAP - 0.065"x6"x50' CONSEAL CS212
- 1) JOINT WRAP PRIMER - CONSEAL CS-75 (1 gal.)
- 1) 72" - MH INVERT CHANNEL w/XYPEX - FULL HEIGHT
- 1) 72" - Conseal CS-102 1.00" (Double)
- 3) 48" - Conseal CS-102 1.00" (Double)
- 2) Kor-N-Seal2 - S206-36
- 446.38 SqFt) MASTERSEAL 610 - Two Coats [EXT]

Structure Notes:  
 1. JBS-1155 SANITARY BY ICAST.  
 2. PER ASTM C478 SPECIFICATIONS.  
 3. CONCRETE = 5,000 PSI AT 28 DAYS.  
 4. REINFORCING PER ASTM A615 (GRADE 60).  
 - CONE (As .12)  
 - TRANS. SLAB - AS SHOWN BY WINFORD PETRONE  
 - RISER/WALLS (As .12)  
 - FLOOR - AS SHOWN BY WINFORD PETRONE

INVERT CHANNEL DRAWING  
 FULL HEIGHT INVERT

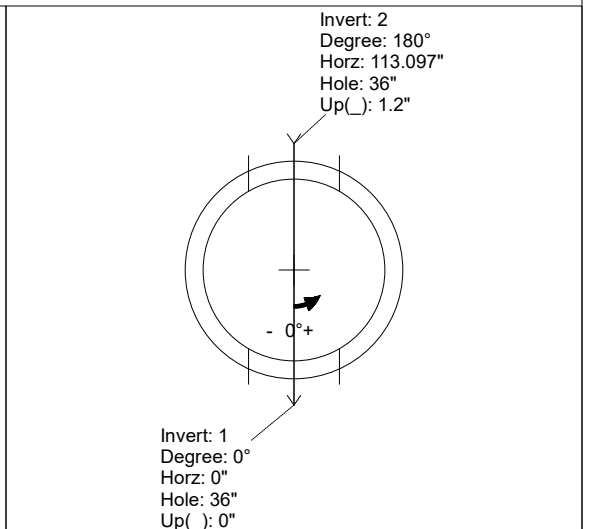
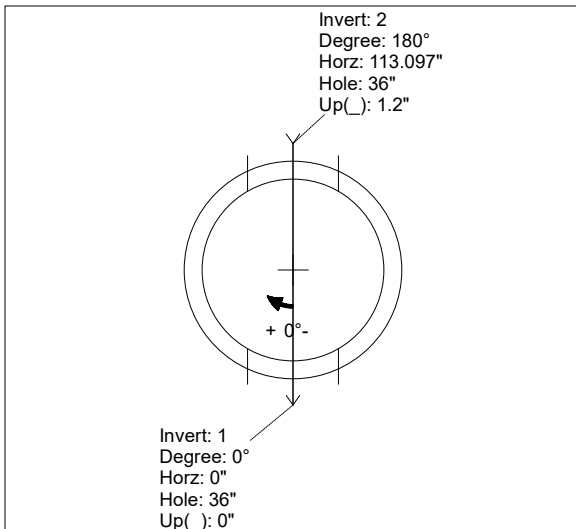
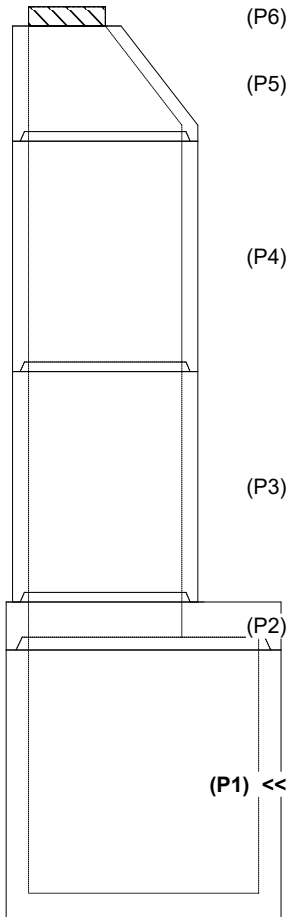
0 lb  
 2251 lb  
 5030 lb  
 5030 lb  
 3864 lb  
 13736 lb  
 0 lb  
 0 lb  
 5422 lb  
 0 lb  
 0 lb  
 13 lb  
 0 lb  
 -----  
 Structure Total: 35346 lb

Rim: 517.72' Rim to Invert: 22.87' Slack: 0.44" Sump: 3" Step Position:

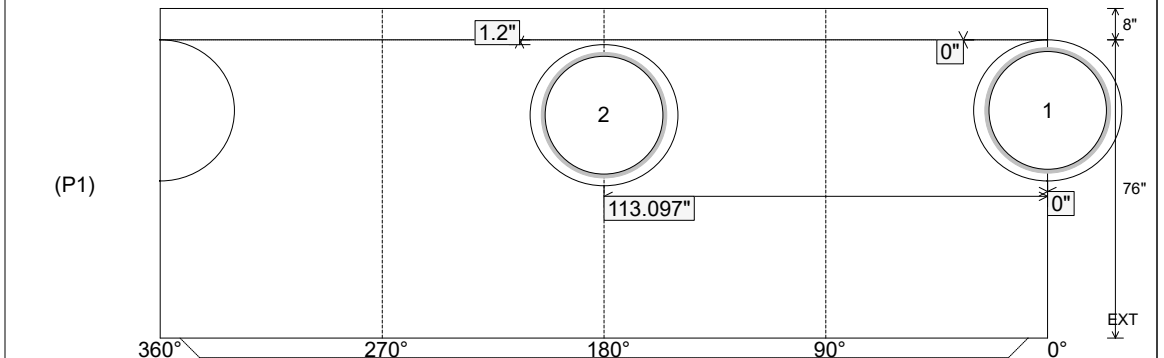
Position	Elev	Angle	Ext. (cw)	Pipe	Pipe OD	Connector	Hole	Horz Size	Up ( )	Offset
Invert 1	494.85'	0°	0"	30" DI	32"	Kor-N-Seal2 S206-36	36"	37.699"	0"	0"
Invert 2	494.95'	180°	135.088"	30" DI	32"	Kor-N-Seal2 S206-36	36"	37.699"	1.2"	0"
Invert 3										
Invert 4										
Invert 5										
Invert 6										
Invert 7										
Invert 8										

RIGHT-SIDE UP VIEW (int. dimensions)

UPSIDE-DOWN VIEW (int. dimensions)



INSIDE WALL DIMENSIONS



Coating (Int):  
 Coating (Ext): MASTERSEAL 610

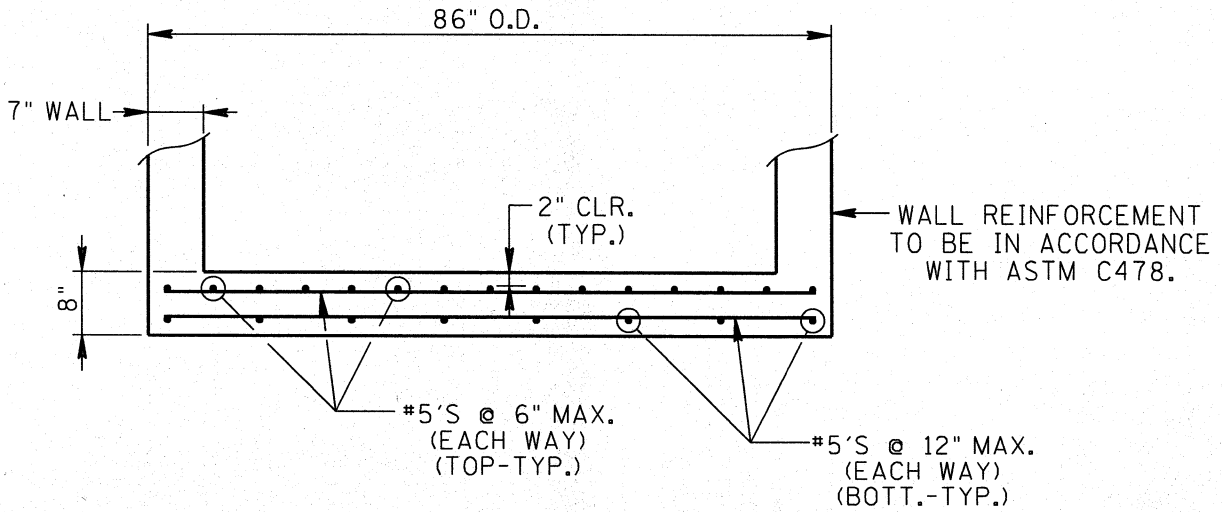
Seam Up: Tongue  
 Seam Dn: n/a

Wall Thickness: 7"  
 Floor Height: 8"

Height (Int): 76"  
 Height (Ext): 84"

Weight (Net): 13736 lb  
 Volume (Net): 3.51cu.yd

25-1664 - Springfield WWTP  
 Floor Reinforcement Information  
 SULPHUR-SSMH-2 5+18.88



BOTTOM UNIT SLAB FOR 72" MANHOLES

THIS DETAIL APPLICABLE TO:  
 SULPHUR-SSMH-1, COVER=8.50', OVERALL HT.=16.917'  
 SULPHUR-SSMH-2, COVER=15.50', OVERALL HT.=23.75'  
 CC SSMH-2, COVER=16.33', OVERALL HT.=24.583'



SK-4

72" TRANSITION MANHOLES: BOTTOM SLAB  
 SPRINGFIELD WWTP INFRASTRUCTURE PRECAST