

Job Name: 25-1664 Springfield WWTP
 Job Location: Springfield, TN
 Contractor: Smith Contractors, Inc.

Plant: Beaver Dam

Tech: J. Coppage

2/2/2026 12:06:05 PM

PC: C. Goff



Structure ID: SULPHUR-SSMH-1 2+56.07

P1 MH072BAVFX

MH BASE Custom Ht, w/XYPEX

P5) 24" - CASTING HEIGHT - 6"	0 lb
P4) 48" - ECC XYPEX CONE w/ 24" HOLE - 36"	2251 lb
P3) 48" - MH RISER w/XYPEX - 60"	4192 lb
P2) 72" - XYPEX MH FT REDUCER 48" HOLE - 15"	3864 lb
P1) 72" - MH BASE Custom Ht, w/XYPEX - 78"	14027 lb
1) JOINT WRAP - 0.065"x6"x50' CONSEAL CS212	0 lb
1) JOINT WRAP PRIMER - CONSEAL CS-75 (1 gal.)	0 lb
1) 72" - MH INVERT CHANNEL w/XYPEX - FULL HEIGHT	5422 lb
1) 72" - Conseal CS-102 1.00" (Double)	0 lb
2) 48" - Conseal CS-102 1.00" (Double)	0 lb
2) Kor-N-Seal2 - S206-36	13 lb
343.84 SqFt) MASTERSEAL 610 - Two Coats [EXT]	0 lb
Structure Total:	29769 lb

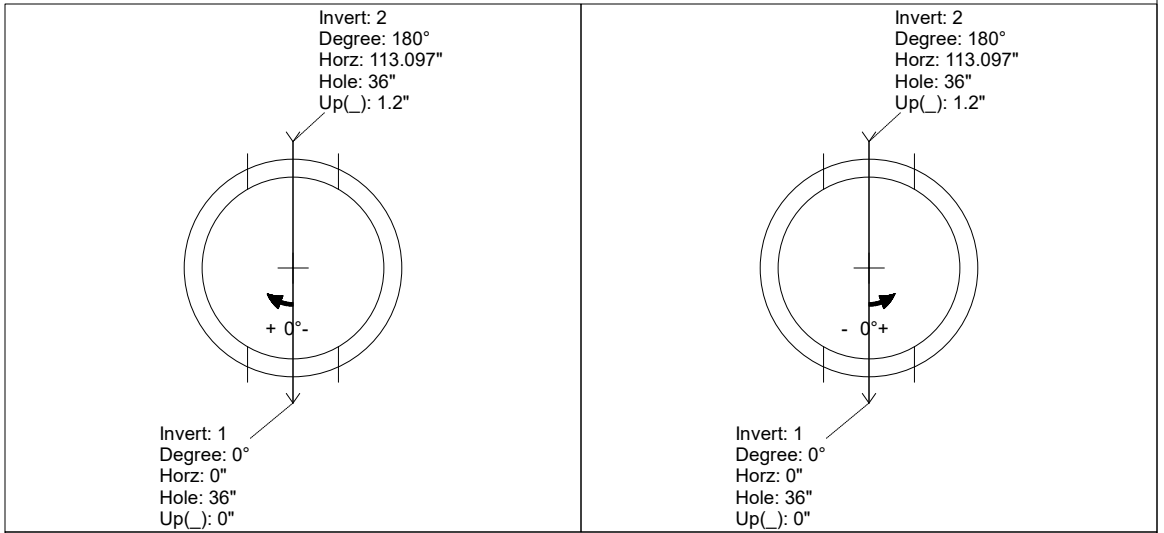
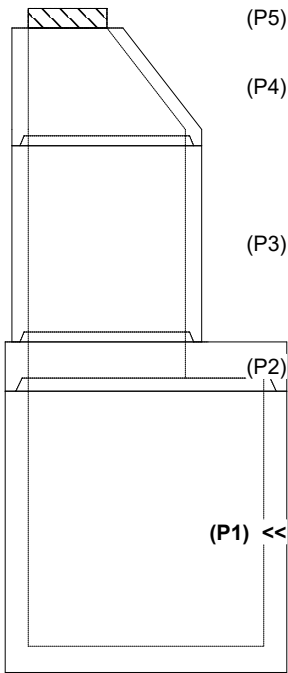
Structure Notes:
 1. JBS-1155 SANITARY BY ICAST.
 2. PER ASTM C478 SPECIFICATIONS.
 3. CONCRETE = 5,000 PSI AT 28 DAYS.
 4. REINFORCING PER ASTM A615 (GRADE 60).
 - CONE (As .12)
 - TRANS. SLAB - AS SHOWN BY WINFORD PETRONE
 - RISER/WALLS (As .12)
 - FLOOR - AS SHOWN BY WINFORD PETRONE

Rim: 511.17' Rim to Invert: 16.04' Slack: 0.48" Sump: 3" Step Position:

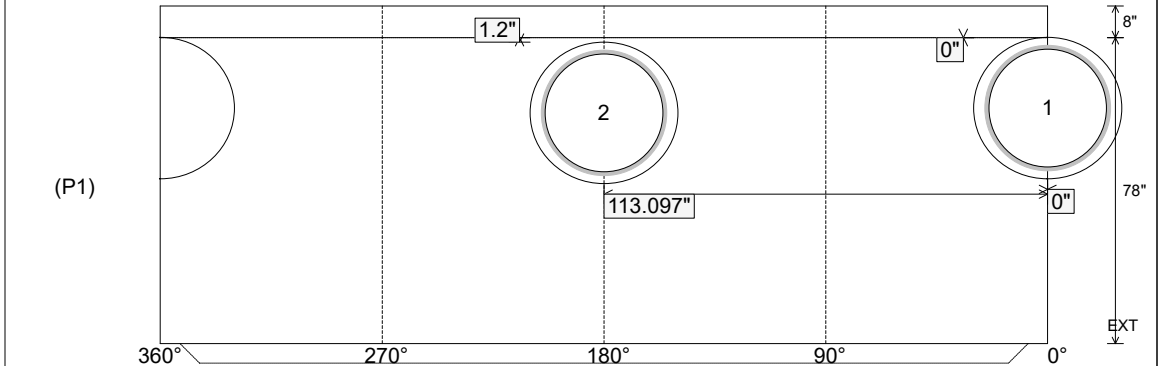
Position	Elev	Angle	Ext. (cw)	Pipe	Pipe OD	Connector	Hole	Horz Size	Up ()	Offset
Invert 1	495.13'	0°	0"	30" DI	32"	Kor-N-Seal2 S206-36	36"	37.699"	0"	0"
Invert 2	495.23'	180°	135.088"	30" DI	32"	Kor-N-Seal2 S206-36	36"	37.699"	1.2"	0"
Invert 3										
Invert 4										
Invert 5										
Invert 6										
Invert 7										
Invert 8										

RIGHT-SIDE UP VIEW (int. dimensions)

UPSIDE-DOWN VIEW (int. dimensions)



INSIDE WALL DIMENSIONS



Coating (Int):
 Coating (Ext): MASTERSEAL 610

Seam Up: Tongue
 Seam Dn: n/a

Wall Thickness: 7"
 Floor Height: 8"

Height (Int): 78"
 Height (Ext): 86"

Weight (Net): 14027 lb
 Volume (Net): 3.58cu.yd

Job Name: 25-1664 Springfield WWTP
 Job Location: Springfield, TN
 Contractor: Smith Contractors, Inc.

Plant: Beaver Dam

Tech: J. Coppage

2/2/2026 12:06:05 PM

PC: C. Goff



Structure ID: SULPHUR-SSMH-1 2+56.07

P1 MH072BAVFX

MH BASE Custom Ht, w/XYPEX

- P5) 24" - CASTING HEIGHT - 6"
- P4) 48" - ECC XYPEX CONE w/ 24" HOLE - 36"
- P3) 48" - MH RISER w/XYPEX - 60"
- P2) 72" - XYPEX MH FT REDUCER 48" HOLE - 15"
- P1) 72" - MH BASE Custom Ht, w/XYPEX - 78"
- 1) JOINT WRAP - 0.065"x6"x50' CONSEAL CS212
- 1) JOINT WRAP PRIMER - CONSEAL CS-75 (1 gal.)
- 1) 72" - MH INVERT CHANNEL w/XYPEX - FULL HEIGHT
- 1) 72" - Conseal CS-102 1.00" (Double)
- 2) 48" - Conseal CS-102 1.00" (Double)
- 2) Kor-N-Seal2 - S206-36
- 343.84 SqFt) MASTERSEAL 610 - Two Coats [EXT]

- Structure Notes:**
1. JBS-1155 SANITARY BY ICAST.
 2. PER ASTM C478 SPECIFICATIONS.
 3. CONCRETE = 5,000 PSI AT 28 DAYS.
 4. REINFORCING PER ASTM A615 (GRADE 60).
- 0 lb - CONE (As .12)
 - 14027 lb - TRANS. SLAB - AS SHOWN BY WINFORD PETRONE
 - 0 lb - RISER/WALLS (As .12)
 - 0 lb - FLOOR - AS SHOWN BY WINFORD PETRONE
 - 5422 lb
 - 0 lb
 - 0 lb
 - 13 lb
 - 0 lb
- INVERT CHANNEL DRAWING
 FULL HEIGHT INVERT**

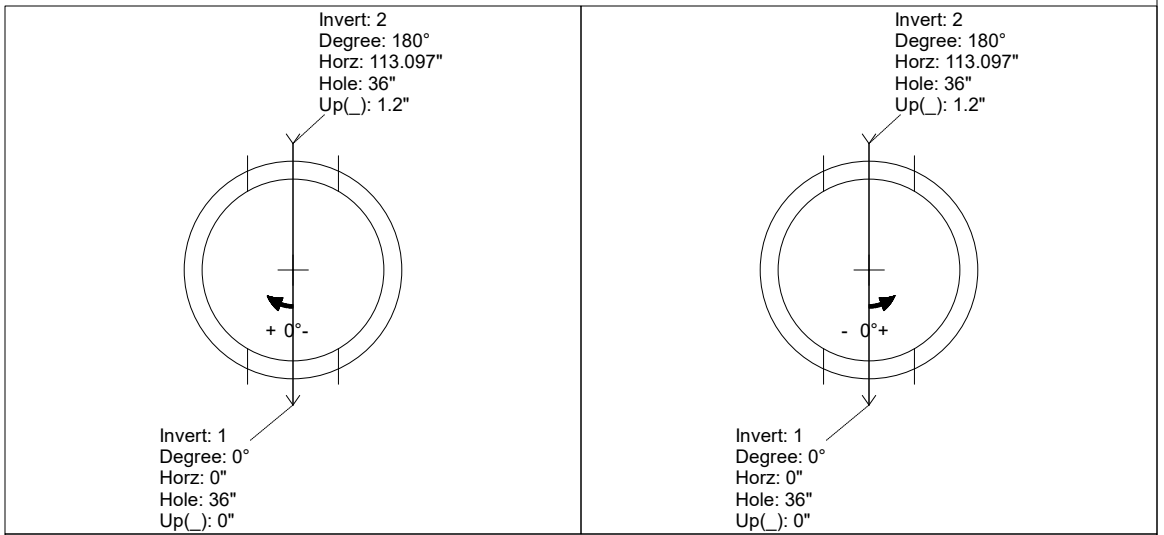
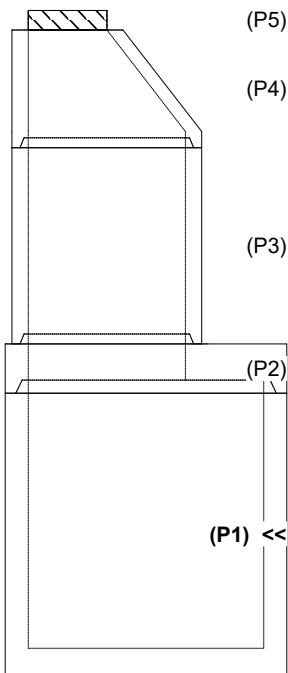
Structure Total: 29769 lb

Rim: 511.17' Rim to Invert: 16.04' Slack: 0.48" Sump: 3" Step Position:

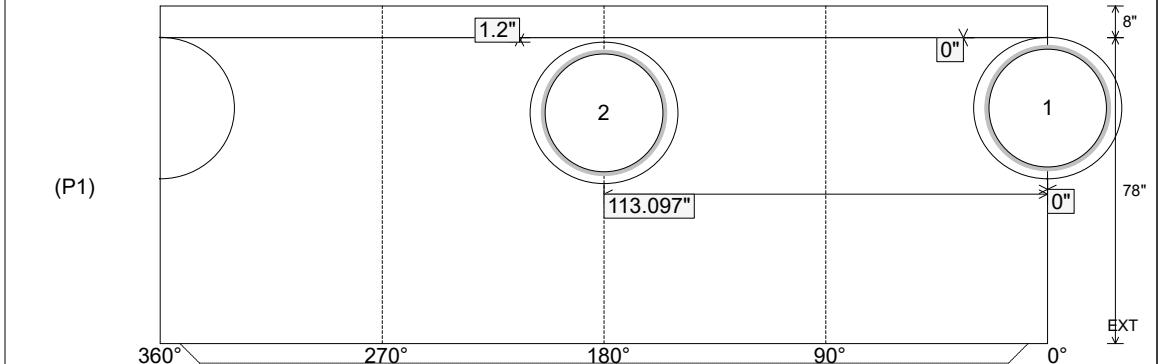
Position	Elev	Angle	Ext. (cw)	Pipe	Pipe OD	Connector	Hole	Horz Size	Up ()	Offset
Invert 1	495.13'	0°	0"	30" DI	32"	Kor-N-Seal2 S206-36	36"	37.699"	0"	0"
Invert 2	495.23'	180°	135.088"	30" DI	32"	Kor-N-Seal2 S206-36	36"	37.699"	1.2"	0"
Invert 3										
Invert 4										
Invert 5										
Invert 6										
Invert 7										
Invert 8										

RIGHT-SIDE UP VIEW (int. dimensions)

UPSIDE-DOWN VIEW (int. dimensions)



INSIDE WALL DIMENSIONS



Coating (Int):
 Coating (Ext): MASTERSEAL 610

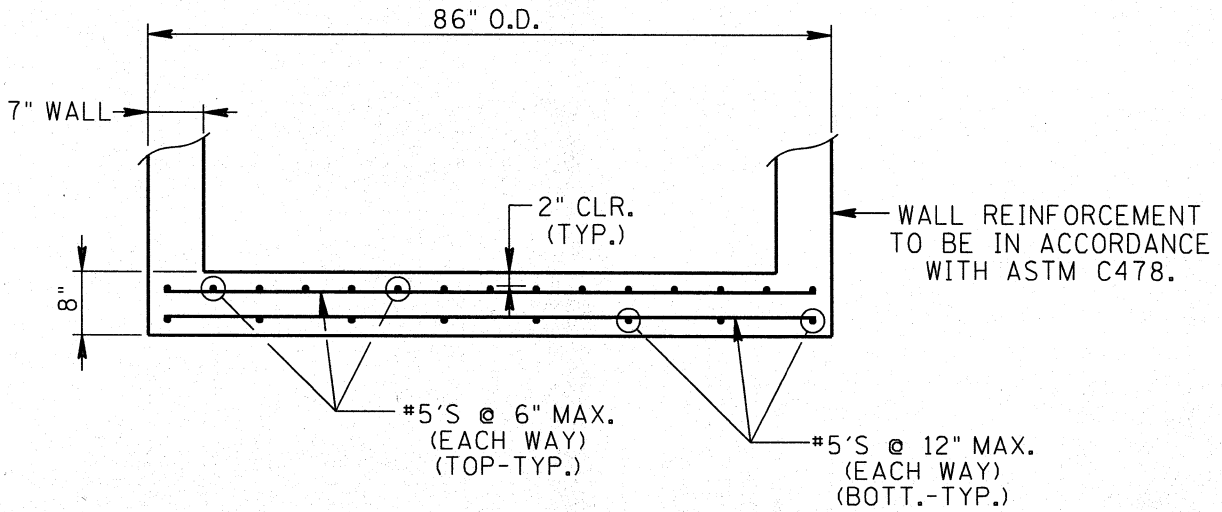
Seam Up: Tongue
 Seam Dn: n/a

Wall Thickness: 7"
 Floor Height: 8"

Height (Int): 78"
 Height (Ext): 86"

Weight (Net): 14027 lb
 Volume (Net): 3.58cu.yd

25-1664 - Springfield WWTP
 Floor Reinforcement Information
 SULPHUR-SSMH-1 2+56.07



BOTTOM UNIT SLAB FOR 72" MANHOLES

THIS DETAIL APPLICABLE TO:
 SULPHUR-SSMH-1, COVER=8.50', OVERALL HT.=16.917'
 SULPHUR-SSMH-2, COVER=15.50', OVERALL HT.=23.75'
 CC SSMH-2, COVER=16.33', OVERALL HT.=24.583'



SK-4

72" TRANSITION MANHOLES: BOTTOM SLAB
 SPRINGFIELD WWTP INFRASTRUCTURE PRECAST