

Job Name: 25-1664 Springfield WWTP  
 Job Location: Springfield, TN  
 Contractor: Smith Contractors, Inc.

Plant: Beaver Dam

12/17/2025 2:35:31 PM

Tech: J. Coppage

PC: C. Goff



**Structure ID: STMH-1 6+86.91 (Outfall MH)**

**P2 MH072LD15-24ECC**

**MH FLAT LID w/24in ECC Hole**

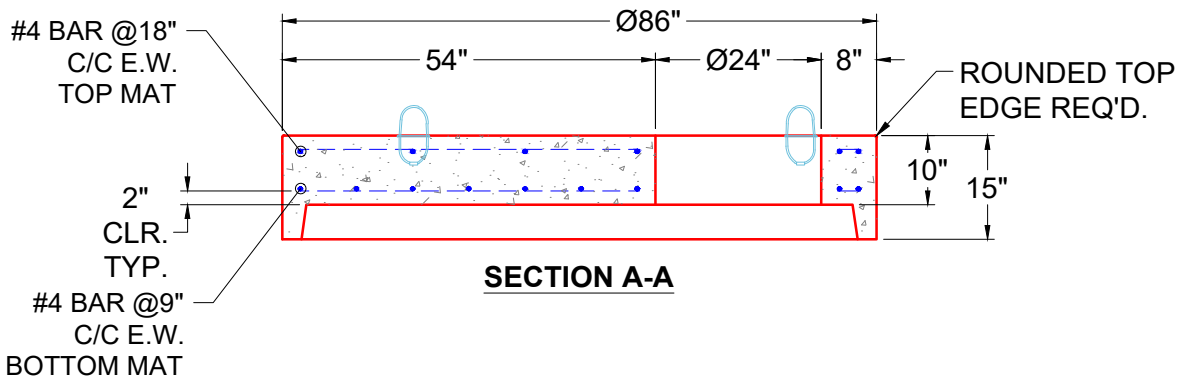
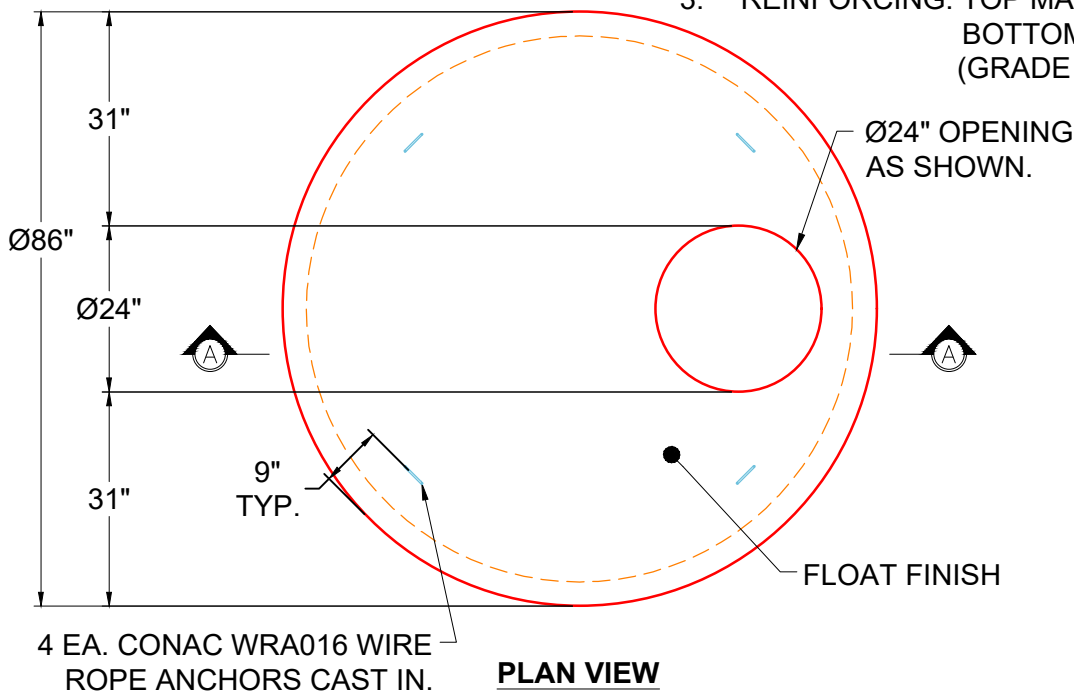
- P3) 24" - CASTING HEIGHT - 6"
- P2) 72" - MH FLAT LID w/24in ECC Hole - 15"
- P1) 72" - MH BASE Custom Ht - 68"
- 1) CASTING - JBS 1021 F/C VENTED
- 1) 72" - Conseal CS-102 1.00"
- 2) Hole - 48

Structure Total:

- 0 lb Structure Notes:  
 5098 lb 1. JBS-1021 FRAME & VENTED COVER BY ICAST.  
 11521 lb 2. PER ASTM C478 SPECIFICATIONS.  
 250 lb 3. CONCRETE = 4,000 PSI AT 28 DAYS.  
 0 lb 4. REINFORCING PER ASTM A615 (GRADE 60).  
 0 lb - TOP SLAB (As .31) AS NOTED BELOW.  
 -----  
 - RISER/WALLS (As .12)  
 - FLOOR (As .37) #5 BARS AT 10" C.C.E.W.  
 5. \*\*NO STEPS\*\*  
 6. EXTERIOR COATINGS SUPPLIED & APPLIED BY OTHERS

**GENERAL NOTES:**

1. MANUFACTURED TO ASTM C-478 (LATEST REVISION).
2. CONCRETE 5,000 PSI AT 28 DAYS.
3. REINFORCING: TOP MAT #4 @ 18" O.C. E.W. BOTTOM MAT #4 @ 9" O.C. E.W. (GRADE 60)



Coating (Int):  
 Coating (Ext):

Seam Up: Flat  
 Seam Dn: Groove

Wall Thickness: 7"

Height (Ext): 15"

Weight (Net): 5098 lb  
 Volume (Net): 1.3cu.yd