

Job Name: 25-1664 Springfield WWTP
 Job Location: Springfield, TN
 Contractor: Smith Contractors, Inc.

Plant: Beaver Dam

Tech: J. Coppage

2/2/2026 12:06:04 PM

PC: C. Goff



Structure ID: SSMH-2 2+89.57

P1 MH048BA30X

MH BASE w/XYPEX

P4) 24" - CASTING HEIGHT - 6"	0 lb
P3) 24" - XYPEX GRADE RING - 4"	270 lb
P2) 48" - ECC XYPEX CONE w/ 24" HOLE - 24"	1738 lb
P1) 48" - MH BASE w/XYPEX - 30"	3282 lb
1) JOINT WRAP - 0.065"x6"x50' CONSEAL CS212	0 lb
1) JOINT WRAP PRIMER - CONSEAL CS-75 (1 gal.)	0 lb
1) 48" - MH INVERT CHANNEL w/XYPEX - FULL HEIGHT	1440 lb
1) 48" - Conseal CS-102 1.00" (Double)	0 lb
2) PSX - 12M NYLO	16 lb
1) PSX - 12-06 NYLO	8 lb
72.48 SqFt) MASTERSEAL 610 - Two Coats [EXT]	0 lb
Structure Total:	6755 lb

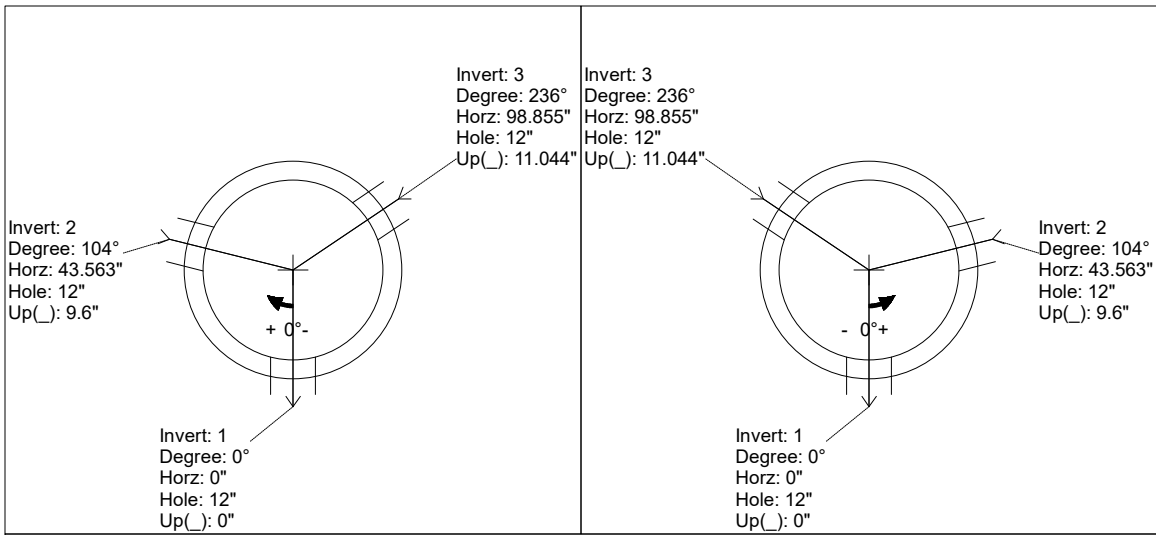
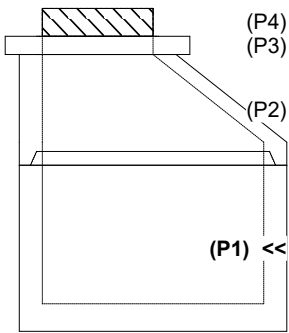
Structure Notes:
 1. JBS-1155 SANITARY BY ICAST.
 2. PER ASTM C478 SPECIFICATIONS.
 3. CONCRETE = 4,000 PSI AT 28 DAYS.
 4. REINFORCING PER ASTM A615 (GRADE 60).
 - CONE (As .12)
 - RISER/WALLS (As .12)
 - FLOOR - AS SHOWN BY WINFORD PETRONE

Rim: 525.25' Rim to Invert: 5.25' Slack: 1.029" Sump: 2.029" Step Position:

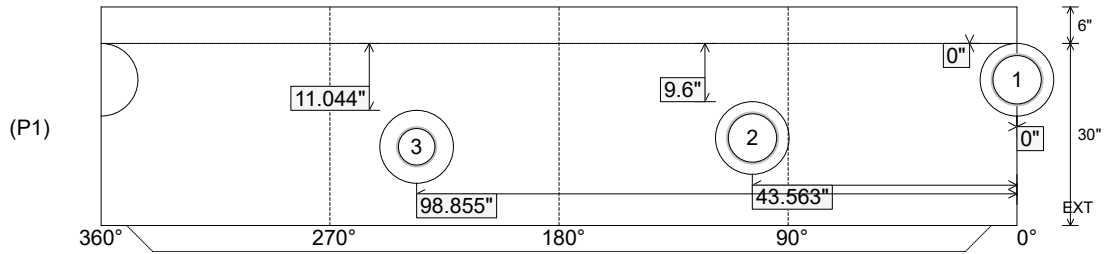
Position	Elev	Angle	Ext. (cw)	Pipe	Pipe OD	Connector	Hole	Horz Size	Up ()	Offset
Invert 1	520'	0°	0"	8" PVC SCH40	8.625"	PSX 12M NYLO	12"	12.129"	0"	0"
Invert 2	520.8'	104°	52.639"	8" PVC SCH40	8.625"	PSX 12M NYLO	12"	12.129"	9.6"	0"
Invert 3	521'	236°	119.45"	6" PVC SCH40	6.625"	PSX 12-06 NYLO	12"	12.129"	11.044"	0"
Invert 4										
Invert 5										
Invert 6										
Invert 7										
Invert 8										

RIGHT-SIDE UP VIEW (int. dimensions)

UPSIDE-DOWN VIEW (int. dimensions)



INSIDE WALL DIMENSIONS



Coating (Int):
 Coating (Ext): MASTERSEAL 610

Seam Up: Tongue
 Seam Dn: n/a

Wall Thickness: 5"
 Floor Height: 6"

Height (Int): 30"
 Height (Ext): 36"

Weight (Net): 3282 lb
 Volume (Net): 0.84cu.yd

Job Name: 25-1664 Springfield WWTP
 Job Location: Springfield, TN
 Contractor: Smith Contractors, Inc.

Plant: Beaver Dam

Tech: J. Coppage

2/2/2026 12:06:04 PM

PC: C. Goff



Structure ID: SSMH-2 2+89.57

P1 MH048BA30X

MH BASE w/XYPEX

- P4) 24" - CASTING HEIGHT - 6"
- P3) 24" - XYPEX GRADE RING - 4"
- P2) 48" - ECC XYPEX CONE w/ 24" HOLE - 24"
- P1) 48" - MH BASE w/XYPEX - 30"
- 1) JOINT WRAP - 0.065"x6"x50' CONSEAL CS212
- 1) JOINT WRAP PRIMER - CONSEAL CS-75 (1 gal.)
- 1) 48" - MH INVERT CHANNEL w/XYPEX - FULL HEIGHT
- 1) 48" - Conseal CS-102 1.00" (Double)
- 2) PSX - 12M NYLO
- 1) PSX - 12-06 NYLO
- 72.48 SqFt) MASTERSEAL 610 - Two Coats [EXT]

- Structure Notes:**
1. JBS-1155 SANITARY BY ICAST.
 2. PER ASTM C478 SPECIFICATIONS.
 3. CONCRETE = 4,000 PSI AT 28 DAYS.
 4. REINFORCING PER ASTM A615 (GRADE 60).
 - CONE (As .12)
 - RISER/WALLS (As .12)
 - FLOOR - AS SHOWN BY WINFORD PETRONE

Structure Total: 6755 lb

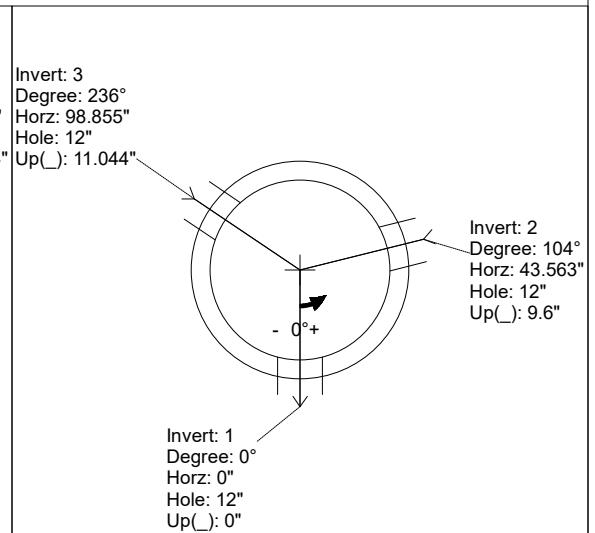
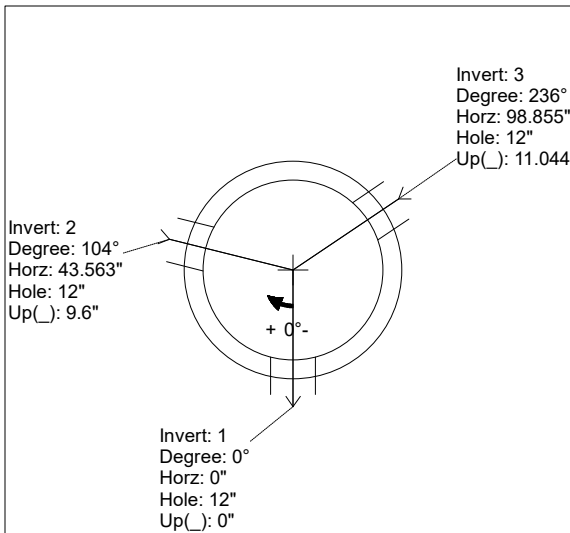
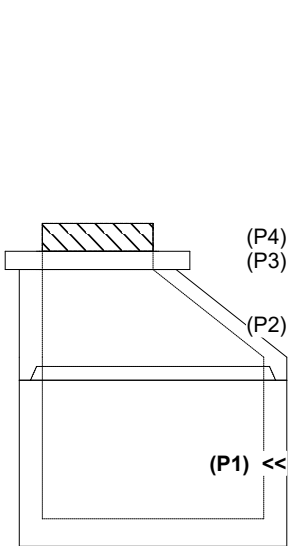
**INVERT CHANNEL DRAWING
 FULL HEIGHT INVERT**

Rim: 525.25' Rim to Invert: 5.25' Slack: 1.029" Sump: 2.029" Step Position:

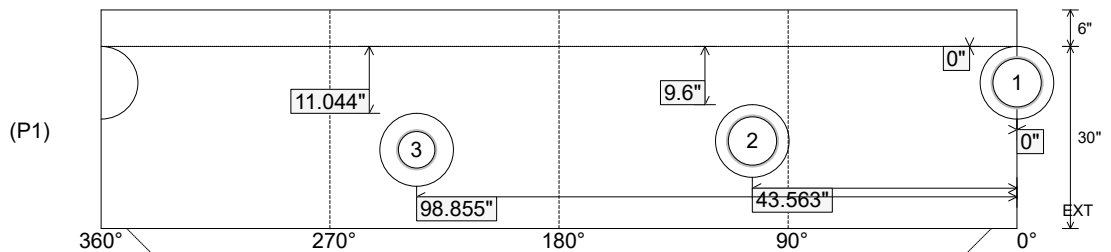
Position	Elev	Angle	Ext. (cw)	Pipe	Pipe OD	Connector	Hole	Horz Size	Up ()	Offset
Invert 1	520'	0°	0"	8" PVC SCH40	8.625"	PSX 12M NYLO	12"	12.129"	0"	0"
Invert 2	520.8'	104°	52.639"	8" PVC SCH40	8.625"	PSX 12M NYLO	12"	12.129"	9.6"	0"
Invert 3	521'	236°	119.45"	6" PVC SCH40	6.625"	PSX 12-06 NYLO	12"	12.129"	11.044"	0"
Invert 4										
Invert 5										
Invert 6										
Invert 7										
Invert 8										

RIGHT-SIDE UP VIEW (int. dimensions)

UPSIDE-DOWN VIEW (int. dimensions)



INSIDE WALL DIMENSIONS



Coating (Int):
 Coating (Ext): MASTERSEAL 610

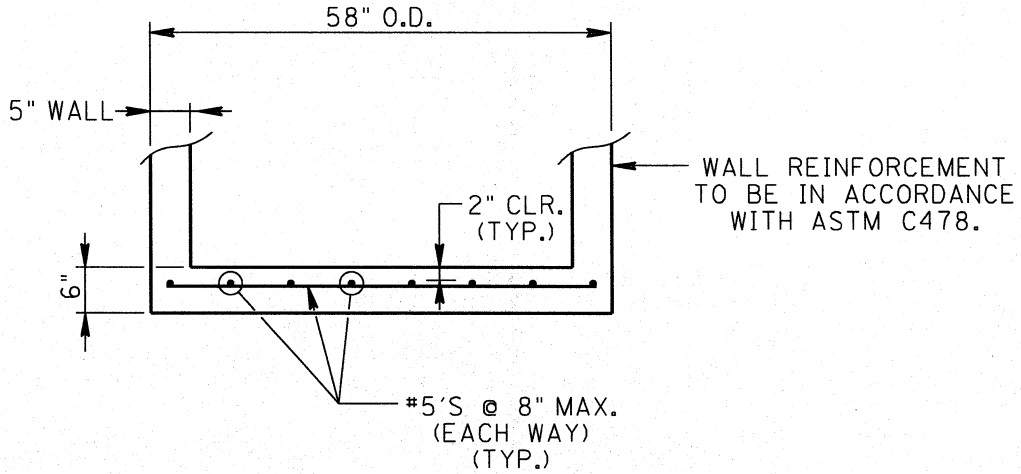
Seam Up: Tongue
 Seam Dn: n/a

Wall Thickness: 5"
 Floor Height: 6"

Height (Int): 30"
 Height (Ext): 36"

Weight (Net): 3282 lb
 Volume (Net): 0.84cu.yd

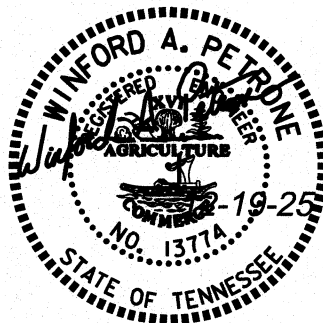
25-1664 - Springfield WWTP
 Transition Slab Reinforcement Information
 CC SSMH-2 1+47.62



BOTTOM UNIT SLAB FOR 48" MANHOLES

THIS DETAIL APPLICABLE TO:
 SWMH-1 OVERALL HT.=3.417'
 SSMH-2 OVERALL HT.=5.833'

NOTE: SEE "ADDITIONAL REINFORCEMENT @ WALL OPENINGS" FOR ADDITIONAL REINFORCEMENT REQUIRED AT OPENINGS



SK-2

48" Ø SANITARY MANHOLES: BOTTOM SLAB
 SPRINGFIELD WWTP INFRASTRUCTURE PRECAST