

Job Name: 25-1664 Springfield WWTP
 Job Location: Springfield, TN
 Contractor: Smith Contractors, Inc.

Plant: Beaver Dam

Tech: J. Copping

2/2/2026 12:06:29 PM

PC: C. Goff



Structure ID: SSMH-1 1+36.67

P2 MH048LD07X

XYPEX MH FLAT TOP w/24" ECC Hole

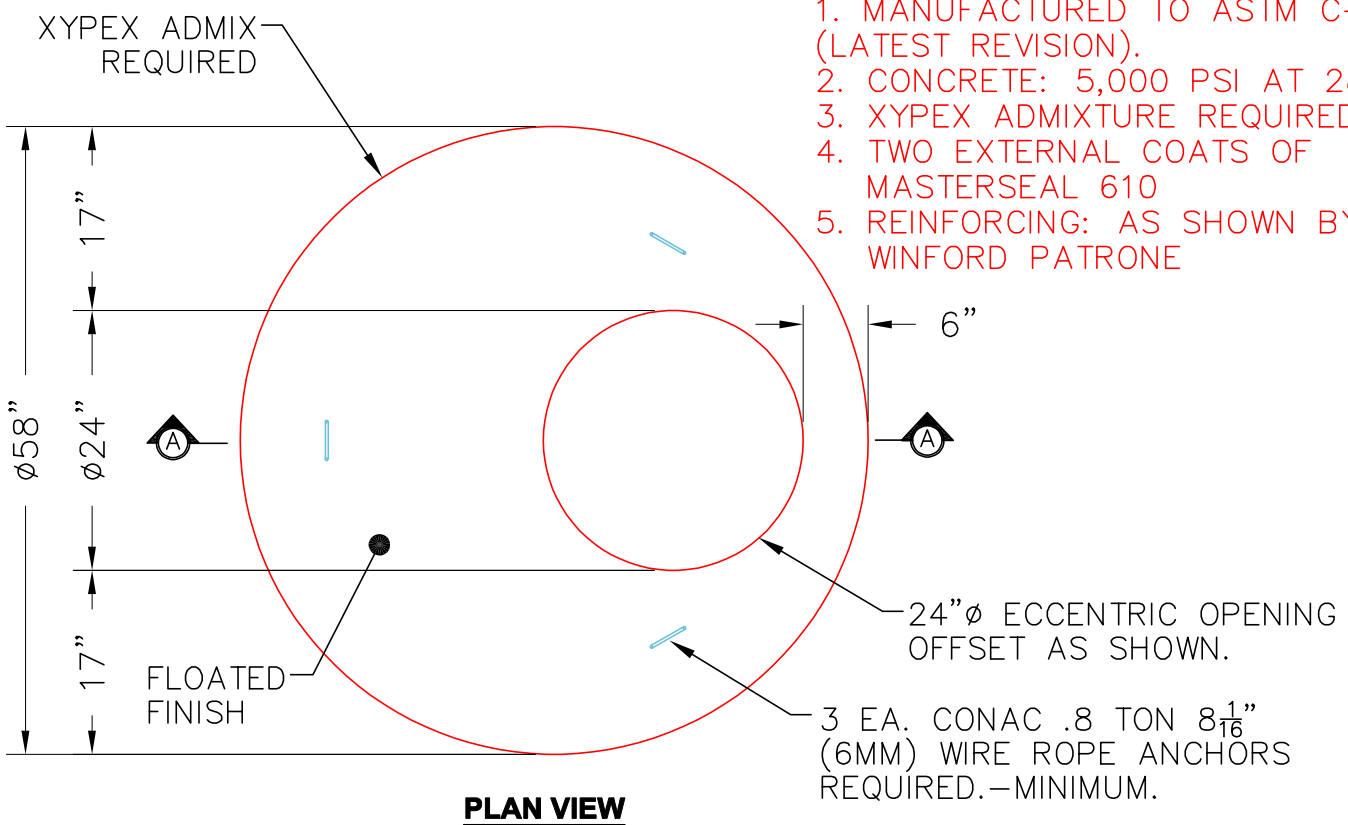
- P3) 24" - CASTING HEIGHT - 6"
- P2) 48" - XYPEX MH FLAT TOP w/24" ECC Hole - 7"
- P1) 48" - MH BASE Custom Ht, w/XYPEX - 22"
- 1) JOINT WRAP - 0.065"x6"x50' CONSEAL CS212
- 1) JOINT WRAP PRIMER - CONSEAL CS-75 (1 gal.)
- 1) 48" - MH INVERT CHANNEL w/XYPEX - FULL HEIGHT
- 1) 48" - Conseal CS-102 1.00" (Double)
- 1) PSX - 12M NYLO
- 3) PSX - 8QRS-S NYLO
- 62.64 SqFt) MASTERSEAL 610 - Two Coats [EXT]

- Structure Notes:**
1. JBS-1155 SANITARY BY ICAST.
 2. PER ASTM C478 SPECIFICATIONS.
 3. CONCRETE = 4,000 PSI AT 28 DAYS.
 4. REINFORCING PER ASTM A615 (GRADE 60).
 - TOP SLAB - AS SHOWN BY WINFORD PETRONE
 - RISER/WALLS (As .12)
 - FLOOR - AS SHOWN BY WINFORD PETRONE

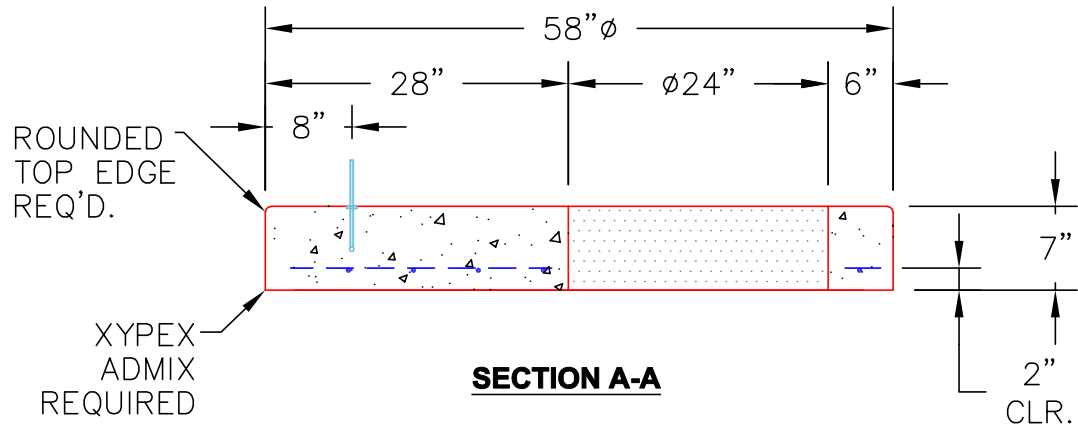
Structure Total: 5509 lb

NOTES:

1. MANUFACTURED TO ASTM C-478 (LATEST REVISION).
2. CONCRETE: 5,000 PSI AT 28 DAYS.
3. XYPEX ADMIXTURE REQUIRED.
4. TWO EXTERNAL COATS OF MASTERSEAL 610
5. REINFORCING: AS SHOWN BY WINFORD PATRONE



PLAN VIEW



SECTION A-A

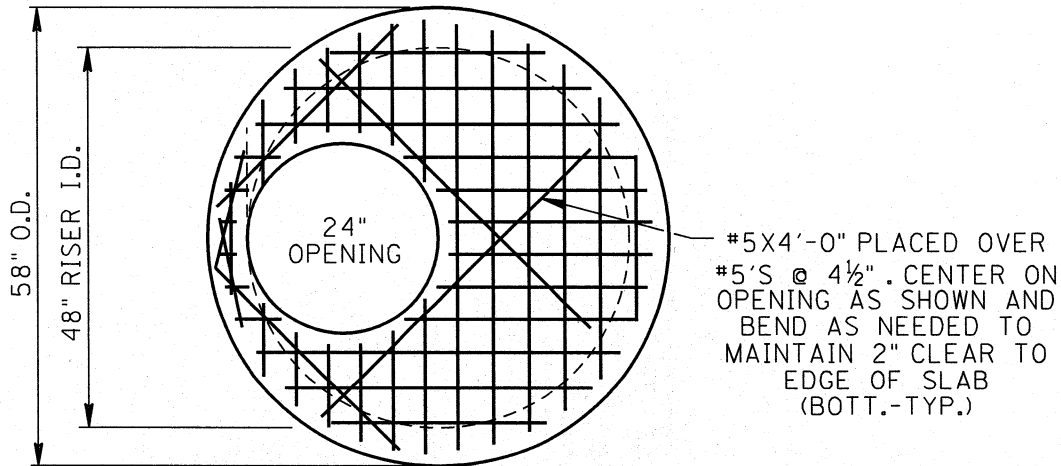
Coating (Int): Coating (Ext): MASTERSEAL 610	Seam Up: Flat Seam Dn: Flat	Wall Thickness: 5"	Height (Ext): 7"	Weight (Net): 1286 lb Volume (Net): 0.33cu.yd
---	--------------------------------	--------------------	------------------	--

NOTE: SEE "PRECAST DESIGN SUBMITTAL..."
 FOR SUMMARY OF BUILDING AND
 DESIGN CODES, MATERIALS REQUIREMENTS,
 AND DESIGN LOADS.

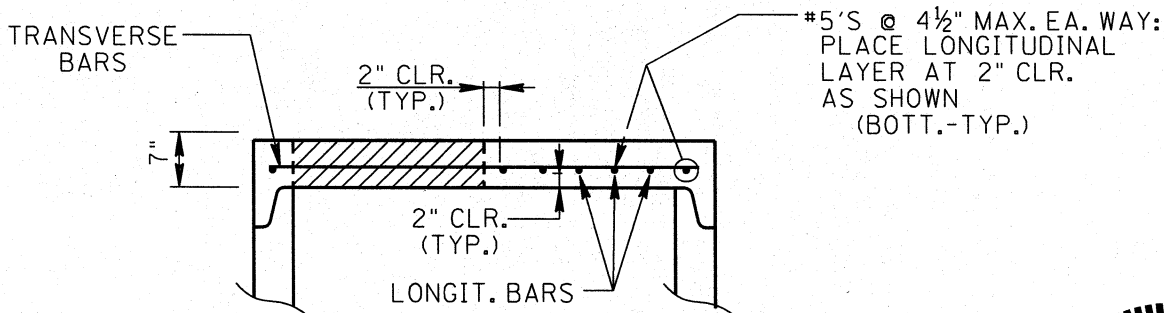
25-1664 - Springfield WWTP
 Top Slab Reinforcement Information
 SSMH-1 1+36.67

NOTE: SEE ICAST WORKING DRAWINGS FOR ADDITIONAL INFORMATION.

NOTE: PROVIDE #5'S @ 4½" MAX.
 BOTT.-TYP. EACH WAY.
 PLACE FIRST BAR NEXT TO
 OPENING AT 2" CLEAR OF
 SIDE OF OPENING.
 CUT ENDS OF BARS AT 2"
 CLEAR OF OPENING AS SHOWN.



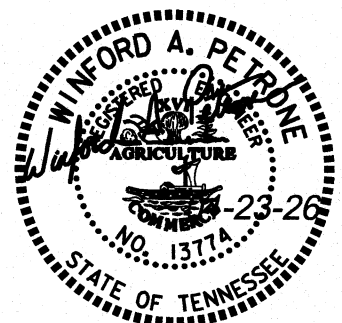
PLAN



SECTION

TOP SLAB FOR 48" Ø

THIS DETAIL APPLICABLE TO:
 SWMH-1 OVERALL HT.=3.417'



SK-1

48" Ø SANITARY MANHOLE: SSMH-1 TOP SLAB
 SPRINGFIELD WWTP