

Job Name: 25-1664 Springfield WWTP
 Job Location: Springfield, TN
 Contractor: Smith Contractors, Inc.

Plant: Beaver Dam

Tech: J. Coppage

2/2/2026 12:06:03 PM

PC: C. Goff



Structure ID: SSMH-1 1+36.67

P1 MH048BAVFX

MH BASE Custom Ht, w/XYPEX

- P3) 24" - CASTING HEIGHT - 6" 0 lb
- P2) 48" - XYPEX MH FLAT TOP w/24" ECC Hole - 7" 1286 lb
- P1) 48" - MH BASE Custom Ht, w/XYPEX - 22" 2756 lb
- 1) JOINT WRAP - 0.065"x6"x50' CONSEAL CS212 0 lb
- 1) JOINT WRAP PRIMER - CONSEAL CS-75 (1 gal.) 0 lb
- 1) 48" - MH INVERT CHANNEL w/XYPEX - FULL HEIGHT 1440 lb
- 1) 48" - Conseal CS-102 1.00" (Double) 0 lb
- 1) PSX - 12M NYLO 8 lb
- 3) PSX - 8QRS-S NYLO 20 lb
- 62.64 SqFt) MASTERSEAL 610 - Two Coats [EXT] 0 lb

Structure Notes:
 1. JBS-1155 SANITARY BY ICAST.
 2. PER ASTM C478 SPECIFICATIONS.
 3. CONCRETE = 4,000 PSI AT 28 DAYS.
 4. REINFORCING PER ASTM A615 (GRADE 60).
 - TOP SLAB - AS SHOWN BY WINFORD PETRONE
 - RISER/WALLS (As .12)
 - FLOOR - AS SHOWN BY WINFORD PETRONE

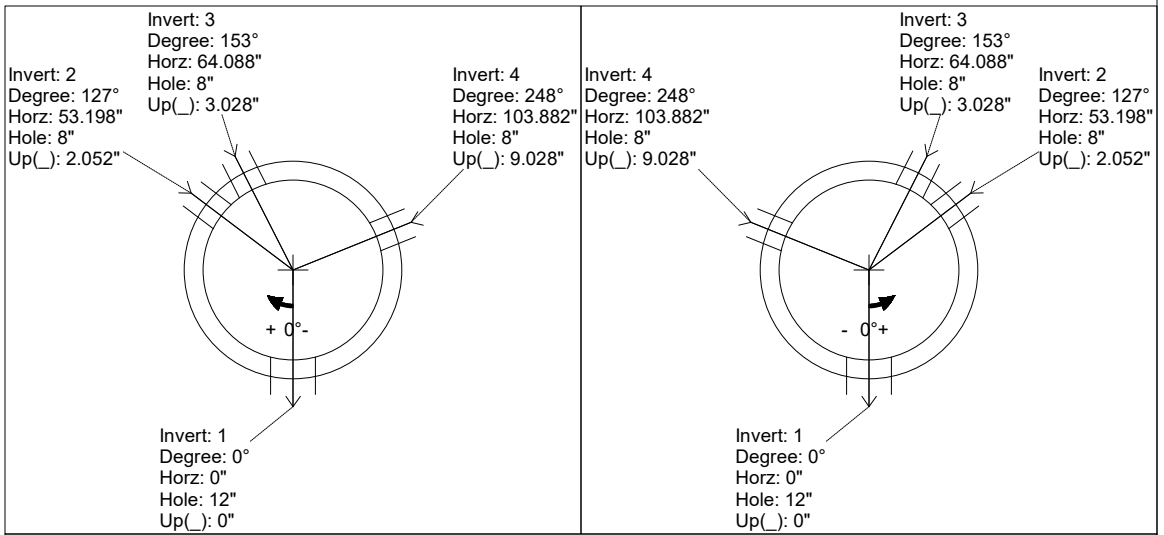
Structure Total: 5509 lb

Rim: 525' Rim to Invert: 2.75' Slack: 0.029" Sump: 2.029" Step Position:

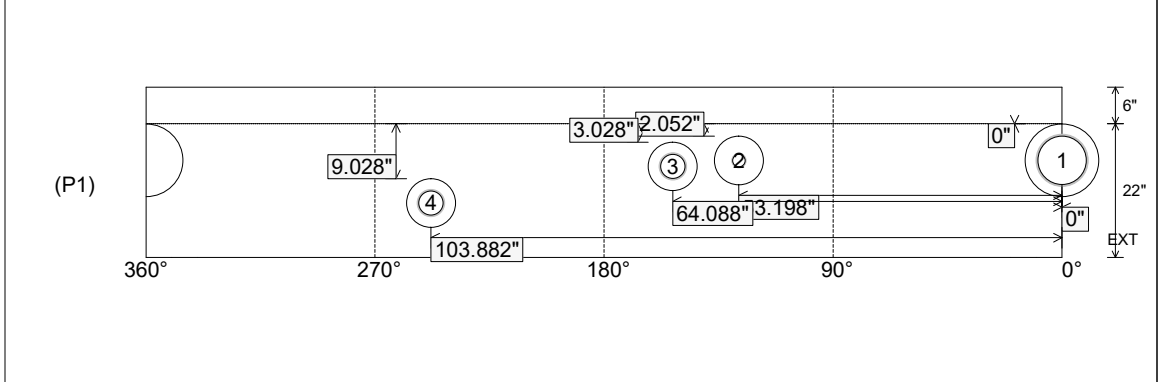
Position	Elev	Angle	Ext. (cw)	Pipe	Pipe OD	Connector	Hole	Horz Size	Up ()	Offset
Invert 1	522.25'	0°	0"	8" PVC SCH40	8.625"	PSX 12M NYLO	12"	12.129"	0"	0"
Invert 2	522.5'	127°	64.28"	2" PVC SCH40	2.375"	PSX 8QRS-S NYLO	8"	8.038"	2.052"	0"
Invert 3	522.5'	153°	77.44"	4" PVC SCH40	4.5"	PSX 8QRS-S NYLO	8"	8.038"	3.028"	0"
Invert 4	523'	248°	125.524"	4" PVC SCH40	4.5"	PSX 8QRS-S NYLO	8"	8.038"	9.028"	0"
Invert 5										
Invert 6										
Invert 7										
Invert 8										

RIGHT-SIDE UP VIEW (int. dimensions)

UPSIDE-DOWN VIEW (int. dimensions)



INSIDE WALL DIMENSIONS



Coating (Int): Coating (Ext): MASTERSEAL 610	Seam Up: Flat Seam Dn: n/a	Wall Thickness: 5" Floor Height: 6"	Height (Int): 22" Height (Ext): 28"	Weight (Net): 2756 lb Volume (Net): 0.7cu.yd
---	-------------------------------	--	--	---

Job Name: 25-1664 Springfield WWTP
 Job Location: Springfield, TN
 Contractor: Smith Contractors, Inc.

Plant: Beaver Dam

Tech: J. Coppage

2/2/2026 12:06:03 PM

PC: C. Goff



Structure ID: SSMH-1 1+36.67

P1 MH048BAVFX

MH BASE Custom Ht, w/XYPEX

- P3) 24" - CASTING HEIGHT - 6"
- P2) 48" - XYPEX MH FLAT TOP w/24" ECC Hole - 7"
- P1) 48" - MH BASE Custom Ht, w/XYPEX - 22"
- 1) JOINT WRAP - 0.065"x6"x50' CONSEAL CS212
- 1) JOINT WRAP PRIMER - CONSEAL CS-75 (1 gal.)
- 1) 48" - MH INVERT CHANNEL w/XYPEX - FULL HEIGHT
- 1) 48" - Conseal CS-102 1.00" (Double)
- 1) PSX - 12M NYLO
- 3) PSX - 8QRS-S NYLO
- 62.64 SqFt) MASTERSEAL 610 - Two Coats [EXT]

- Structure Notes:**
1. JBS-1155 SANITARY BY ICAST.
 2. PER ASTM C478 SPECIFICATIONS.
 3. CONCRETE = 4,000 PSI AT 28 DAYS.
 4. REINFORCING PER ASTM A615 (GRADE 60).
- TOP SLAB - AS SHOWN BY WINFORD PETRONE
 - RISER/WALLS (As .12)
 - FLOOR - AS SHOWN BY WINFORD PETRONE

Structure Total: 5509 lb

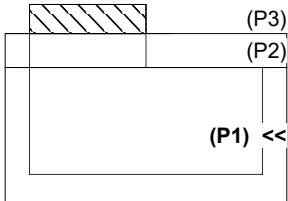
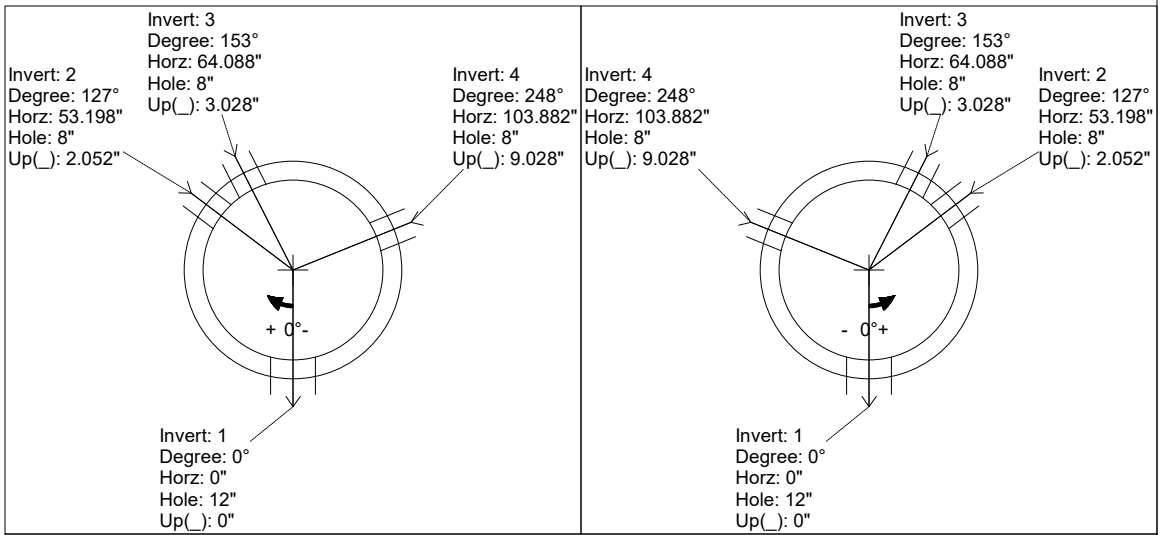
**INVERT CHANNEL DRAWING
 FULL HEIGHT INVERT**

Rim: 525' Rim to Invert: 2.75' Slack: 0.029" Sump: 2.029" Step Position:

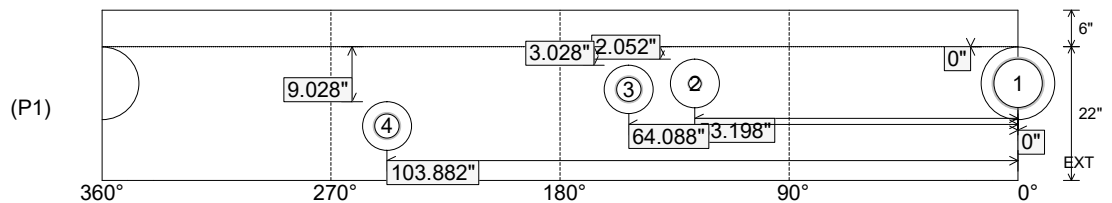
Position	Elev	Angle	Ext. (cw)	Pipe	Pipe OD	Connector	Hole	Horz Size	Up ()	Offset
Invert 1	522.25'	0°	0"	8" PVC SCH40	8.625"	PSX 12M NYLO	12"	12.129"	0"	0"
Invert 2	522.5'	127°	64.28"	2" PVC SCH40	2.375"	PSX 8QRS-S NYLO	8"	8.038"	2.052"	0"
Invert 3	522.5'	153°	77.44"	4" PVC SCH40	4.5"	PSX 8QRS-S NYLO	8"	8.038"	3.028"	0"
Invert 4	523'	248°	125.524"	4" PVC SCH40	4.5"	PSX 8QRS-S NYLO	8"	8.038"	9.028"	0"
Invert 5										
Invert 6										
Invert 7										
Invert 8										

RIGHT-SIDE UP VIEW (int. dimensions)

UPSIDE-DOWN VIEW (int. dimensions)



INSIDE WALL DIMENSIONS



Coating (Int):
 Coating (Ext): MASTERSEAL 610

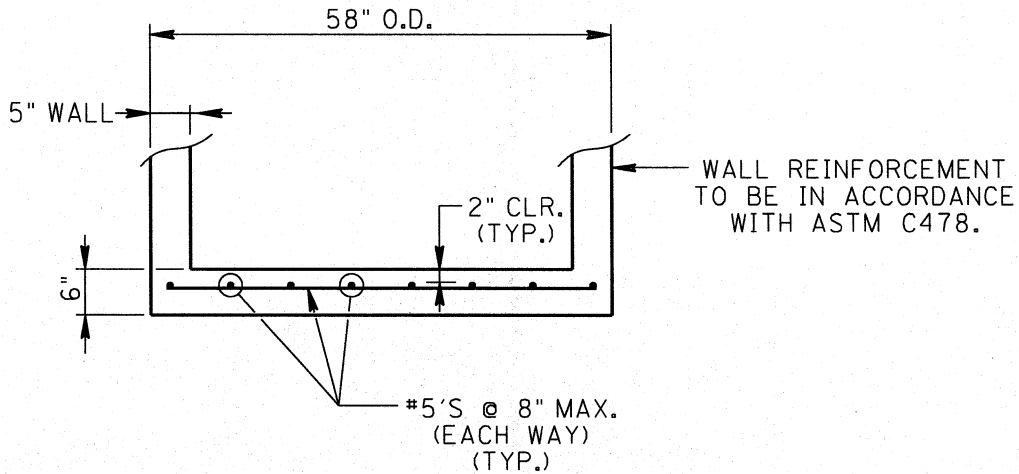
Seam Up: Flat
 Seam Dn: n/a

Wall Thickness: 5"
 Floor Height: 6"

Height (Int): 22"
 Height (Ext): 28"

Weight (Net): 2756 lb
 Volume (Net): 0.7cu.yd

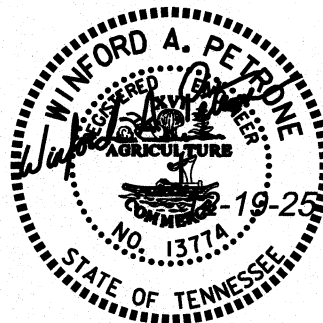
25-1664 - Springfield WWTP
Floor Reinforcement Information
SSMH-1 1+36.67



BOTTOM UNIT SLAB FOR 48" MANHOLES

THIS DETAIL APPLICABLE TO:
SWMH-1 OVERALL HT.=3.417'
SSMH-2 OVERALL HT.=5.833'

NOTE: SEE "ADDITIONAL REINFORCEMENT @ WALL OPENINGS" FOR ADDITIONAL REINFORCEMENT REQUIRED AT OPENINGS



SK-2

48" \emptyset SANITARY MANHOLES: BOTTOM SLAB
SPRINGFIELD WWTP INFRASTRUCTURE PRECAST