

Job Name: 25-1664 Springfield WWTP  
 Job Location: Springfield, TN  
 Contractor: Smith Contractors, Inc.

Plant: Beaver Dam

Tech: J. Coppinge

3/17/2026 3:05:55 PM

PC: C. Goff



**Structure ID: IN-PLANT PUMP STATION**

**P1 MH096SBE12X-142OD**

**MH SEPARATE BASE-T EXT. 14" (142" OD) w/Xypex**

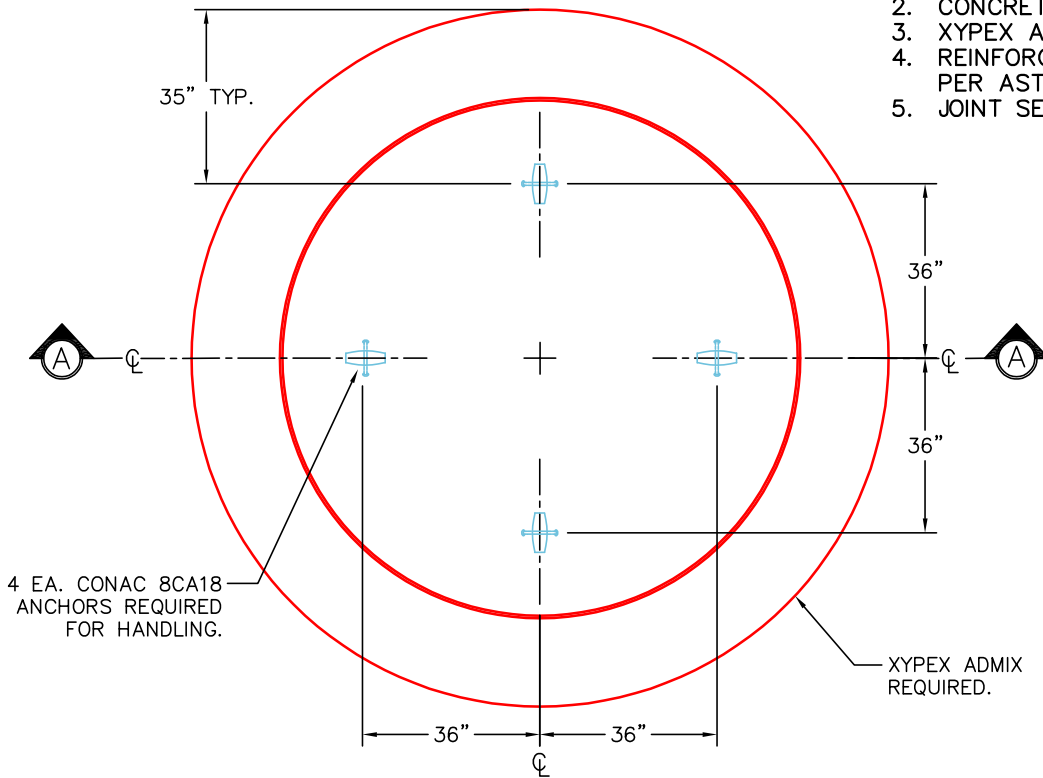
- P5) 36" x 54" - CASTING HEIGHT - 0"
- P4) 96" - MH FLAT TOP w/36"x54" Hatch w/Xypex - 17"
- P3) 96" - MH RISER Custom Ht, w/XYPEX - 82"
- P2) 96" - MH RISER w/XYPEX - 48"
- P1) 96" - MH SEPARATE BASE-T EXT. 14" (142" OD) w/Xypex - 12"
- 3) 96" - Conseal CS-231 1.00" (Double)
- 1) 36" x 54" - Conseal CS-231 1.00" (Double)
- 2) Z-Lok - C107-6
- 2) PSX - 8QRS-S NYLO
- 1) PSX - 12-08 NYLO
- 3) PSX - 12-06 NYLO

0 lb	<b>Structure Notes:</b>
9188 lb	1. PER ASTM C-478 LATEST REVISION
19865 lb	2. CONCRETE = 5,000 PSI AT 28 DAYS
11958 lb	3. XYPEX ADMIXTURE REQUIRED
20303 lb	4. REINFORCEMENT: PER ASTM A615 (GRADE 60)
0 lb	5. (36" X 54" HATCH PROVIDED BY OTHERS)
0 lb	6. HATCH TO BE CAST INTO THE TOP SLAB.
2 lb	
13 lb	
8 lb	
24 lb	
-----	
Structure Total:	61361 lb

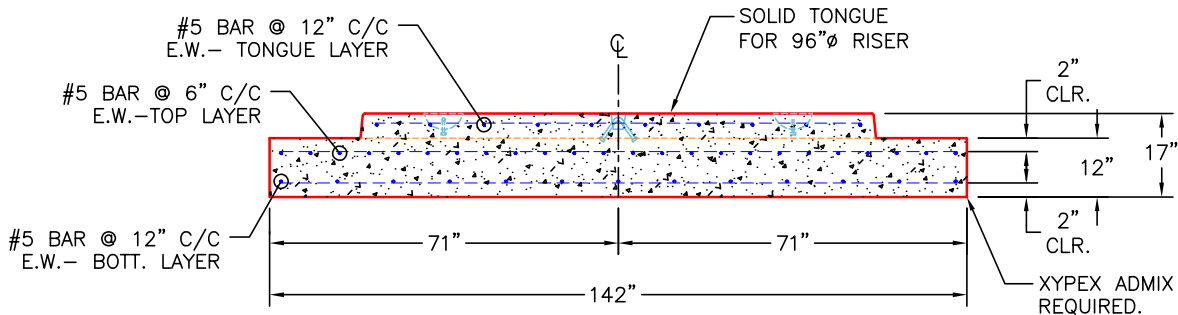
Rim: 522.5'    Rim to Invert: 5.2'    Slack: 0"    Sump: 84.6"    Step Position:

**NOTES:**

1. PER ASTM C-478 LATEST REVISION
2. CONCRETE = 5,000 PSI AT 28 DAYS
3. XYPEX ADMIXTURE REQUIRED.
4. REINFORCEMENT: AS SHOWN BELOW. PER ASTM A615 (GRADE 60).
5. JOINT SEALANT: 1" CS-231 - DOUBLE



**PLAN VIEW**



**SECTION A-A**

Coating (Int): Coating (Ext):	Seam Up: Tongue Seam Dn: n/a	Wall Thickness: 9" Floor Height: 12"	Height (Int): 0" Height (Ext): 0"	Weight (Net): 20303 lb Volume (Net): 5.19cu.yd
----------------------------------	---------------------------------	---	--------------------------------------	---