

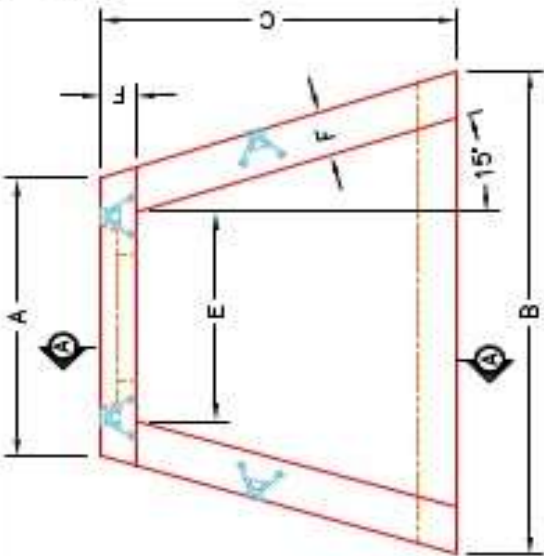


Structure ID: HW 0+00.00

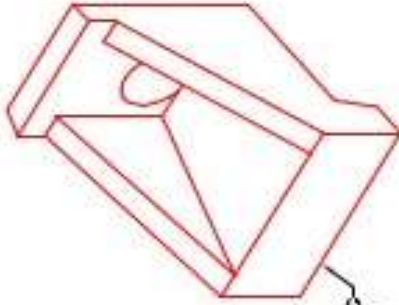
P1 HWBW24

24" - HW BW w/FOOTER

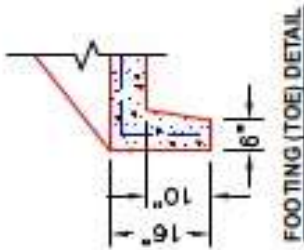
DIMENSIONS & QUANTITIES										
TYPE	PIPE Ø	A	B	C	D	E	F	G	WEIGHT W/TOE	WEIGHT
BW	24"	4'-0"	6'-0"	3'-8"	3'-0"	3'-0"	8"	6"	3,475 LBS.	3,100 LBS.



PLANVIEW

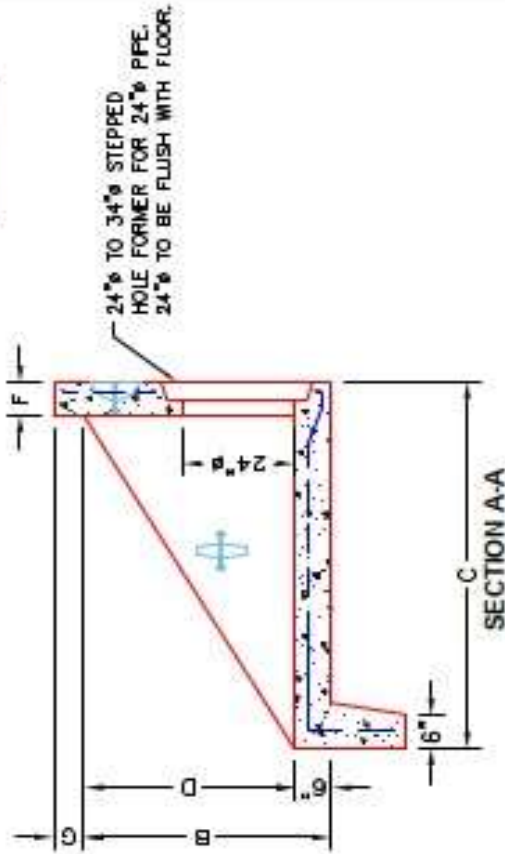


ISOMETRIC VIEW

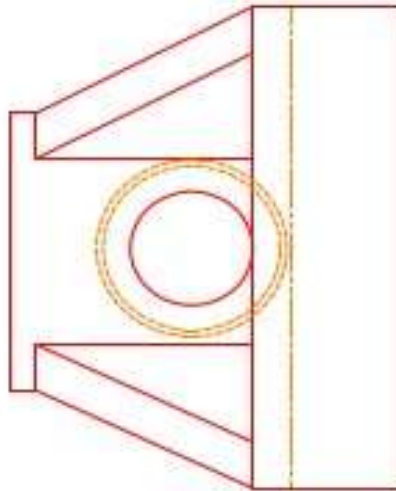


FOOTING (TOE) DETAIL

WITH FOOTING
(SEE DETAIL)



SECTION A-A



FRONT ELEVATION

~NOTES:

1. CONCRETE: 4500 PSI AT 28 DAYS MIN. STRENGTH.
2. REINFORCING: #4 BAR @ 12" C/C E.W.-GRADE 60, (WITH 2" CONCRETE COVER MINIMUM)
3. REINFORCING BARS TO BE TACK WELDED OR TIED.

PRODUCTION WORK ORDER

QUALITY CONTROL CHECKLIST
<input type="checkbox"/> ALL DIMENSIONS CORRECT.
<input type="checkbox"/> LIFTERS INSTALLED.
<input type="checkbox"/> STEPPED IF CORRECT SIZE.
<input type="checkbox"/> REINFORCING CORRECT.
<input type="checkbox"/> CLEARANCE ON REINFORCING CORRECT.
<input type="checkbox"/> EDGES CHAMFERED.
<input type="checkbox"/> ALL PATCHWORK ACCEPTABLE.



PRODUCT I.D.: HWBW24	DESCRIPTION: BW WINGED HEADWALL FOR 24"Ø PIPE
PRODUCT VIEW: RIGHT SIDE UP	CUSTOMER: STOCK
PLANT: BEAVER DAM, KY.	PROJECT: STOCK
WEIGHT: 3,475 LBS.	STRUCTURE ID.: STOCK
TOP SECTION JOINT: N/A	SALES ORDER NO: T.B.D.
BASE SECTION JOINT: N/A	CHECK: A. WELLS
QC CHECK INITIALS:	DRAWING: N. RICHARDS
	DATE: 04/06/23
	SCALE: NTS
	PG. 1 of 1