

Job Name: 25-1664 Springfield WWTP
 Job Location: Springfield, TN
 Contractor: Smith Contractors, Inc.

Plant: Beaver Dam

Tech: J. Coppage

3/16/2026 11:58:13 AM

PC: C. Goff



Structure ID: FILTER-UV PUMP STATION

P1 MH072BAEVFX

MH BASE EF Cust. Ht. 12"F (8"EF =102"OD) w/ XYPEX

- P4) 36" x 54" - HATCH (CAST FLUSH) - 3"
- P3) 72" - MH FLAT TOP XYPEX w/36"x54" Hatch - 15"
- P2) 72" - MH RISER w/XYPEX - 72"
- P1) 72" - MH BASE EF Cust. Ht. 12"F (8"EF =102"OD) w/ XYPEX - 30"
- 1) SECONDARY POUR - EXT. FLANGE
- 2) 72" - Conseal CS-231 1.00" (Double)
- 1) 36" x 54" - Conseal CS-231 1.00" (Double)
- 3) PSX - 8QRS-S NYLO
- 1) PSX - 12-06 NYLO

100 lb
 3625 lb
 10335 lb
 12601 lb
 0 lb
 0 lb
 0 lb
 20 lb
 8 lb

Structure Total: 26689 lb

Structure Notes:

1. PER ASTM C-478 LATEST REVISION
2. CONCRETE = 5,000 PSI AT 28 DAYS
3. XYPEX ADMIXTURE REQUIRED
4. REINFORCEMENT: PER ASTM A615 (GRADE 60)
 - TOP SLAB
 - TOP LAYER (As .31) #4 BARS AT 18" C.C.E.W.
 - BTM LAYER (As .31) #4 BARS AT 12" C.C.E.W.
- RISER/WALLS (As .12)
- FLOOR (As .37) #5 BARS AT 10" C.C.E.W. DBL MAT
5. (36" X 54" HATCH PROVIDED BY OTHERS)
6. HATCH TO BE CAST INTO THE TOP SLAB.

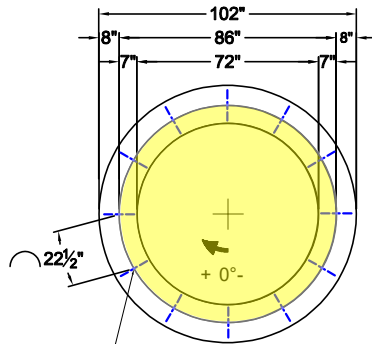
FIRST POUR DRAWING

Rim: 516.75' Rim to Invert: 5.75' Slack: 0" Sump: 48" Step Position:

Position	Elev	Angle	Ext. (cw)	Pipe	Pipe OD	Connector	Hole	Horz Size	Up (L)	Offset
Invert 1										
Invert 2										
Invert 3										
Invert 4										
Invert 5										
Invert 6										
Invert 7										
Invert 8										

RIGHT-SIDE UP VIEW (int. dimensions)

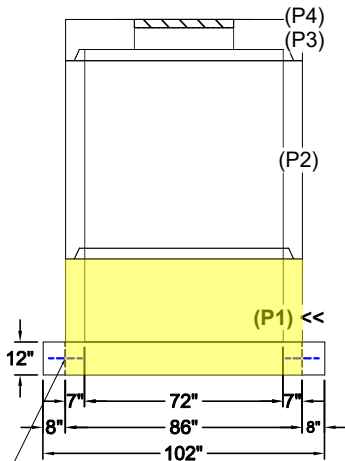
UPSIDE-DOWN VIEW (int. dimensions)



DRILL & STUB 12EA #5 BARS AT 10" LONG 22 1/2" C-C AROUND THE PERIMETER OF MANHOLE FOR FLANGE POUR. 4" MIN. PENETRATION INTO THE BASE REQUIRED.

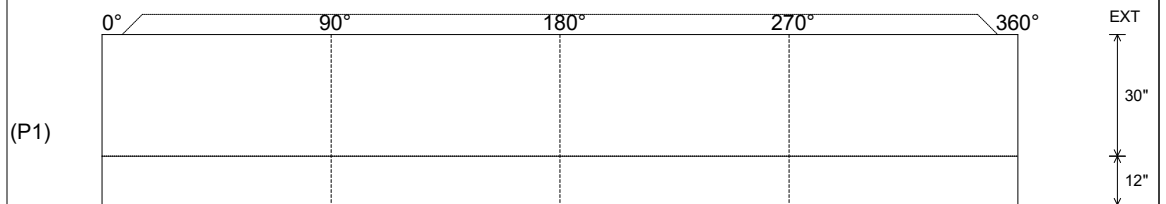
WEIGHTS

FIRST POUR - 10,222 LBS
SECOND POUR - 2,379 LBS
TOTAL - 12,601 LBS



DRILL & STUB 12EA #5 BARS AT 10" LONG 22 1/2" C-C AROUND THE PERIMETER OF MANHOLE FOR FLANGE POUR. 4" MIN. PENETRATION INTO THE BASE REQUIRED.

INSIDE WALL DIMENSIONS



Coating (Int):
 Coating (Ext):

Seam Up: Tongue
 Seam Dn: n/a

Wall Thickness: 7"
 Floor Height: 12"

Height (Int): 30"
 Height (Ext): 42"

Weight (Net): 12601 lb
 Volume (Net): 3.22cu.yd

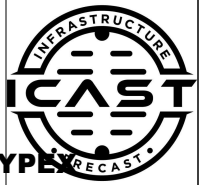
Job Name: 25-1664 Springfield WWTP
 Job Location: Springfield, TN
 Contractor: Smith Contractors, Inc.

Plant: Beaver Dam

Tech: J. Coppage

3/16/2026 11:58:13 AM

PC: C. Goff



Structure ID: FILTER-UV PUMP STATION

P1 MH072BAEVFX

MH BASE EF Cust. Ht. 12"F (8"EF =102"OD) w/ XYPEX

- P4) 36" x 54" - HATCH (CAST FLUSH) - 3"
- P3) 72" - MH FLAT TOP XYPEX w/36"x54" Hatch - 15"
- P2) 72" - MH RISER w/XYPEX - 72"
- P1) 72" - MH BASE EF Cust. Ht. 12"F (8"EF =102"OD) w/ XYPEX - 30"
- 1) SECONDARY POUR - EXT. FLANGE
- 2) 72" - Conseal CS-231 1.00" (Double)
- 1) 36" x 54" - Conseal CS-231 1.00" (Double)
- 3) PSX - 8QRS-S NYLO
- 1) PSX - 12-06 NYLO

100 lb
 3625 lb
 10335 lb
 12601 lb
 0 lb
 0 lb
 0 lb
 20 lb
 8 lb

 Structure Total: 26689 lb

Structure Notes:

1. PER ASTM C-478 LATEST REVISION
2. CONCRETE = 5,000 PSI AT 28 DAYS
3. XYPEX ADMIXTURE REQUIRED
4. REINFORCEMENT: PER ASTM A615 (GRADE 60)
 - TOP SLAB
 - TOP LAYER (As .31) #4 BARS AT 18" C.C.E.W.
 - BTM LAYER (As .31) #4 BARS AT 12" C.C.E.W.
- RISER/WALLS (As .12)
- FLOOR (As .37) #5 BARS AT 10" C.C.E.W. DBL MAT
5. (36" X 54" HATCH PROVIDED BY OTHERS)
6. HATCH TO BE CAST INTO THE TOP SLAB.

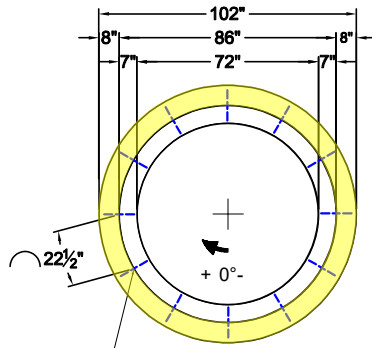
SECOND POUR DRAWING

Rim: 516.75' Rim to Invert: 5.75' Slack: 0" Sump: 48" Step Position:

Position	Elev	Angle	Ext. (cw)	Pipe	Pipe OD	Connector	Hole	Horz Size	Up (L)	Offset
Invert 1										
Invert 2										
Invert 3										
Invert 4										
Invert 5										
Invert 6										
Invert 7										
Invert 8										

RIGHT-SIDE UP VIEW (int. dimensions)

UPSIDE-DOWN VIEW (int. dimensions)



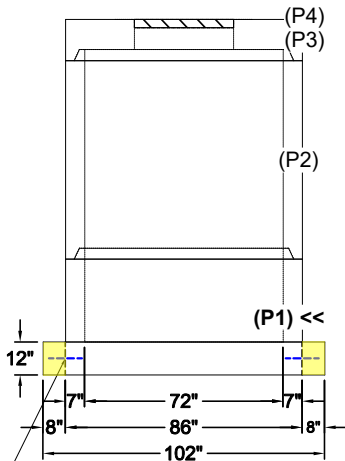
DRILL & STUB 12EA #5 BARS AT 10" LONG 22½" C-C AROUND THE PERIMETER OF MANHOLE FOR FLANGE POUR. 4" MIN. PENETRATION INTO THE BASE REQUIRED.

WEIGHTS

FIRST POUR - 10,222 LBS

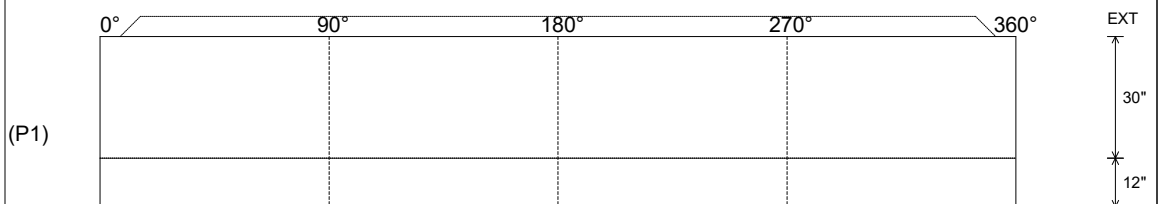
SECOND POUR - 2,379 LBS

TOTAL - 12,601 LBS



DRILL & STUB 12EA #5 BARS AT 10" LONG 22½" C-C AROUND THE PERIMETER OF MANHOLE FOR FLANGE POUR. 4" MIN. PENETRATION INTO THE BASE REQUIRED.

INSIDE WALL DIMENSIONS



Coating (Int):
 Coating (Ext):

Seam Up: Tongue
 Seam Dn: n/a

Wall Thickness: 7"
 Floor Height: 12"

Height (Int): 30"
 Height (Ext): 42"

Weight (Net): 12601 lb
 Volume (Net): 3.22cu.yd