





**Structure ID: DHW 0+44.86**

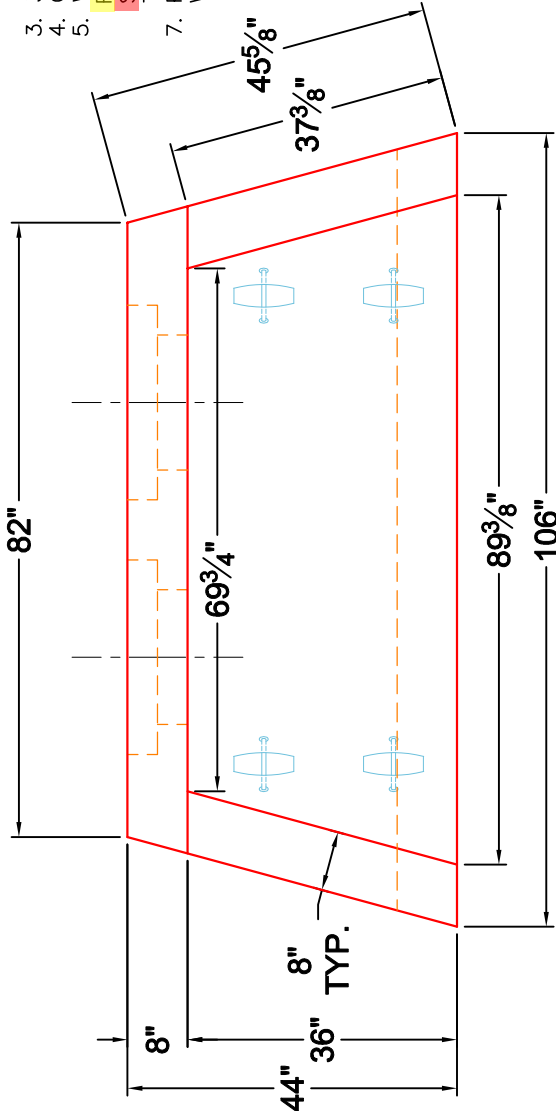
**P1 HWDBLCUSTOM**

**18" - HW AW DOUBLE w/FOOTER**

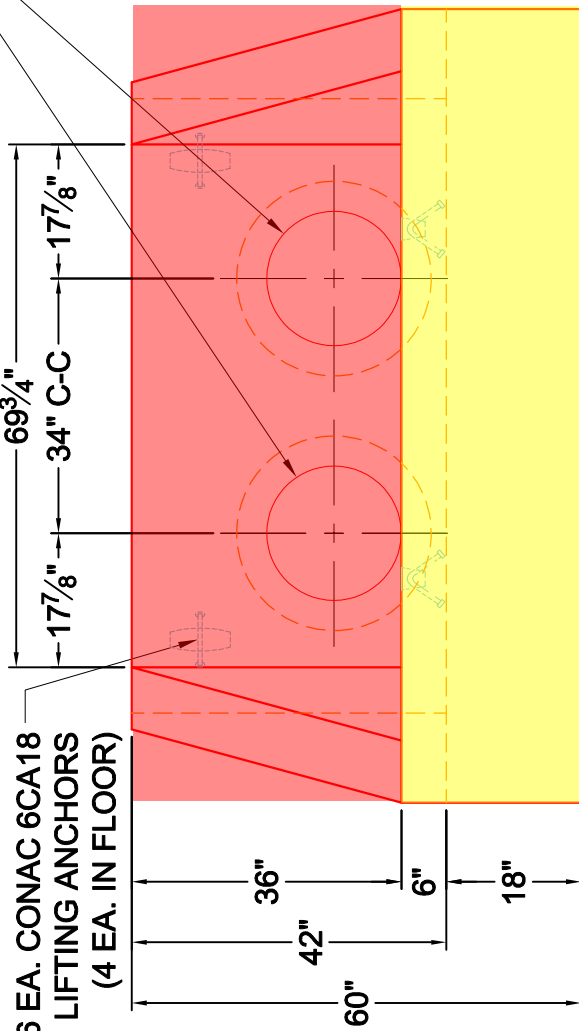
**NOTES:**

1. CONCRETE: 4,500 PSI @ 28 DAYS.
2. REINFORCING: #5 BARS @ 12" C/C E.W.-GRADE 60, WITH 2" CONCRETE COVER MIN. (TYPICAL).
3. 3/4" CHAMFER REQUIRED ON EXPOSED EDGES.
4. CAGE REINFORCING BARS TO BE TACK WELDED OR TIED.
5. WEIGHT: **FIRST POUR: 3,337 LBS.**  
**SECOND POUR: 3,283 LBS.**
6. TOTAL: 6,620 LBS.
7. PIPE AND LIFTING ANCHOR POCKETS TO BE GROUTED WITH MSD APPROVED NON-SHRINK GROUT.

**SECOND POUR DRAWING**

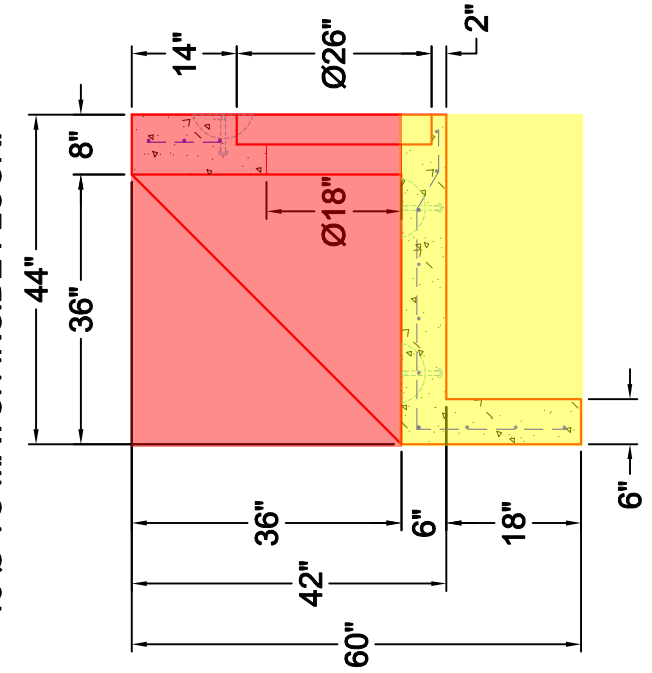


**PLAN VIEW**



**FRONT ELEVATION**

**2 EA. 26"Ø STEPPED TO 18"Ø HOLES FOR DOUBLE 18"Ø RCP PIPES 18"Ø TO MATCH INSIDE FLOOR.**



**SECTION A-A**

**6 EA. CONAC 6CA18 LIFTING ANCHORS (4 EA. IN FLOOR)**