



**Structure ID: DHW 0+00.00**

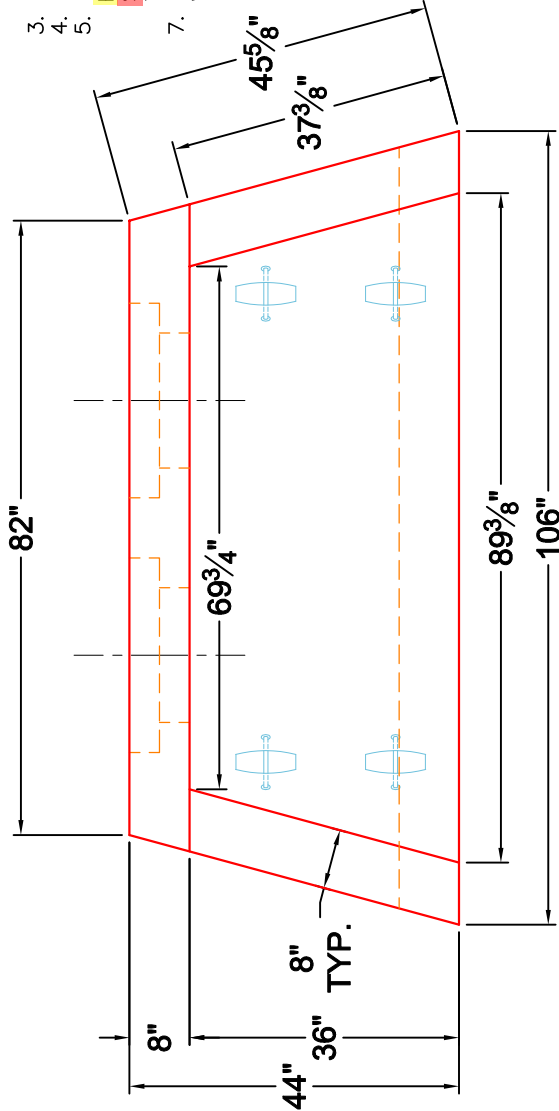
**P1 HWDBLCUSTOM**

**18" - HW AW DOUBLE w/FOOTER**

**NOTES:**

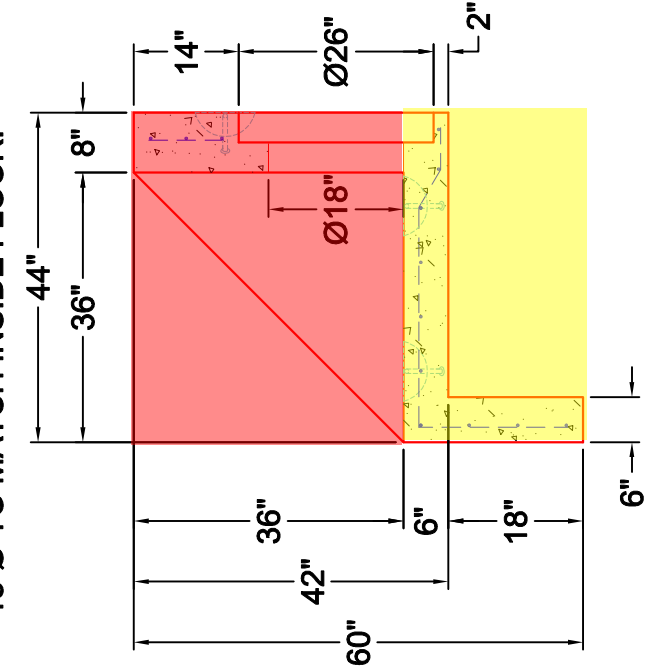
1. CONCRETE: 4,500 PSI @ 28 DAYS.
2. REINFORCING: #5 BARS @ 12" C/C E.W.-GRADE 60, WITH 2" CONCRETE COVER MIN. (TYPICAL).
3. 3/4" CHAMFER REQUIRED ON EXPOSED EDGES.
4. CAGE REINFORCING BARS TO BE TACK WELDED OR TIED.
5. WEIGHT:  
**FIRST POUR: 3,337 LBS.**  
**SECOND POUR: 3,283 LBS.**  
**TOTAL: 6,620 LBS.**
7. PIPE AND LIFTING ANCHOR POCKETS TO BE GROUTED WITH MSD APPROVED NON-SHRINK GROUT.

**FIRST POUR DRAWING**

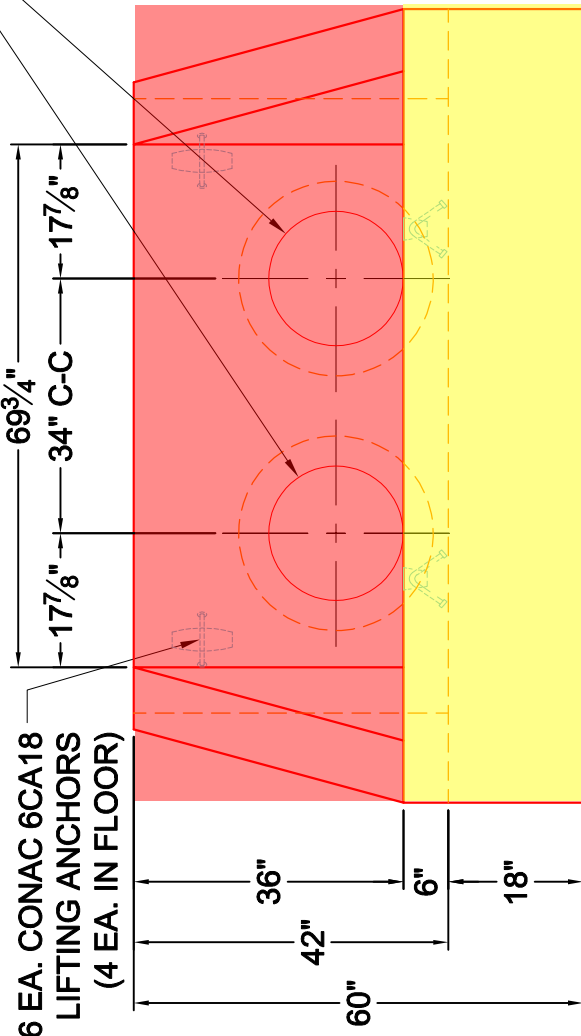


**PLAN VIEW**

2 EA. 26"Ø STEPPED TO 18"Ø HOLES FOR DOUBLE 18"Ø RCP PIPES 18"Ø TO MATCH INSIDE FLOOR.



**SECTION A-A**



**FRONT ELEVATION**

6 EA. CONAC 6CA18 LIFTING ANCHORS (4 EA. IN FLOOR)



**Structure ID: DHW 0+00.00**

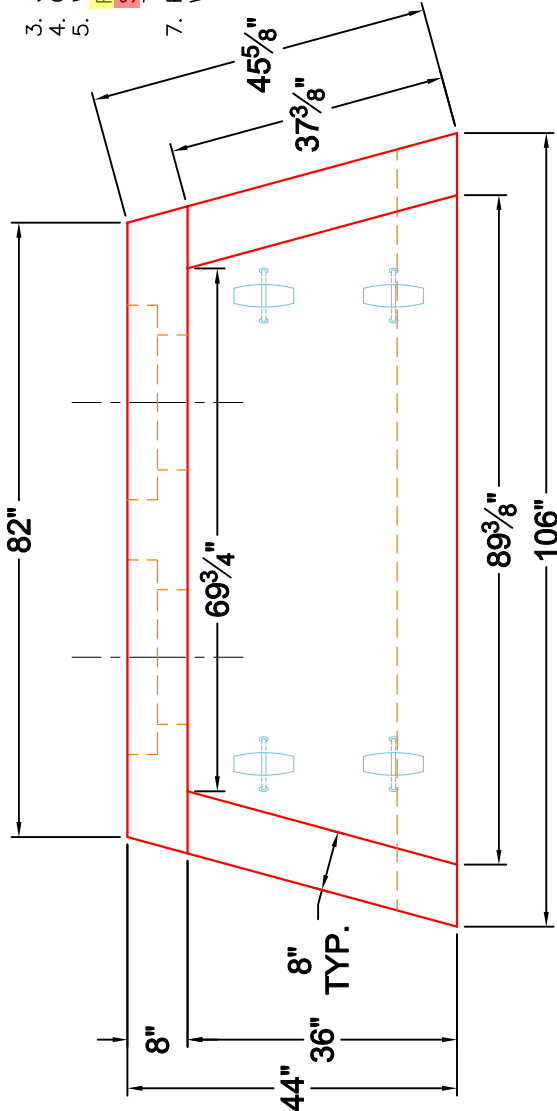
**P1 HWDBLCUSTOM**

**18" - HW AW DOUBLE w/FOOTER**

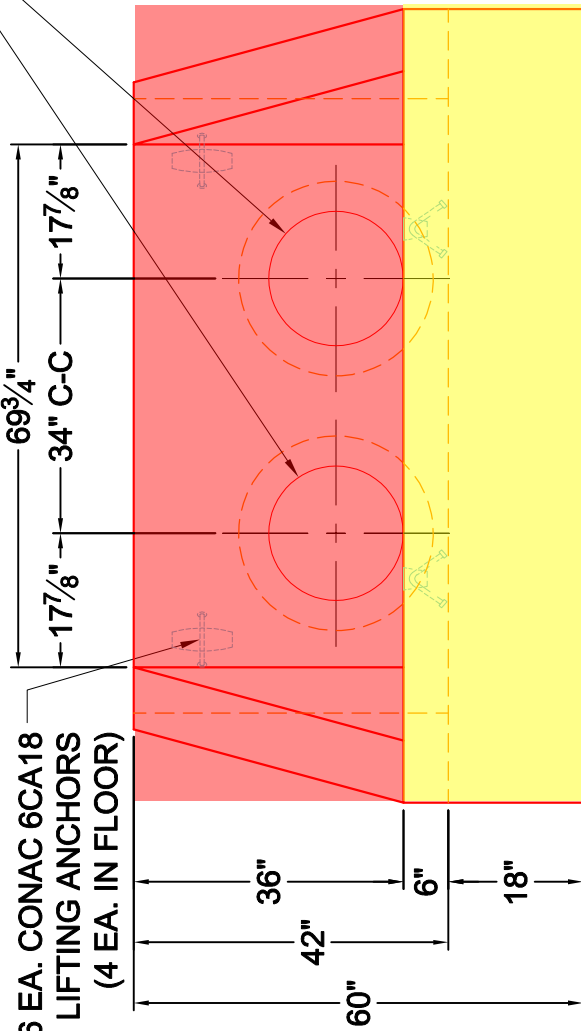
**NOTES:**

1. CONCRETE: 4,500 PSI @ 28 DAYS.
2. REINFORCING: #5 BARS @ 12" C/C E.W.-GRADE 60, WITH 2" CONCRETE COVER MIN. (TYPICAL).
3. 3/4" CHAMFER REQUIRED ON EXPOSED EDGES.
4. CAGE REINFORCING BARS TO BE TACK WELDED OR TIED.
5. WEIGHT:  
 FIRST POUR: 3,337 LBS.  
 SECOND POUR: 3,283 LBS.  
 TOTAL: 6,620 LBS.
7. PIPE AND LIFTING ANCHOR POCKETS TO BE GROUTED WITH MSD APPROVED NON-SHRINK GROUT.

**SECOND POUR DRAWING**

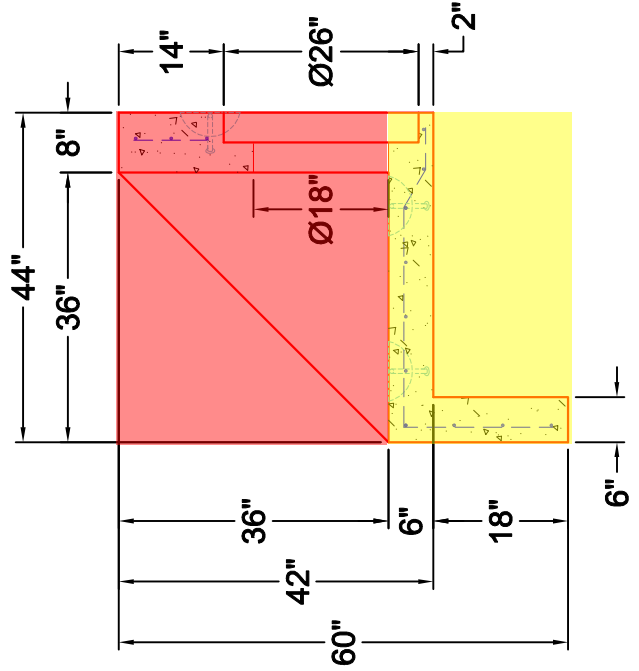


**PLAN VIEW**



**FRONT ELEVATION**

2 EA. 26"Ø STEPPED TO 18"Ø HOLES FOR DOUBLE 18"Ø RCP PIPES 18"Ø TO MATCH INSIDE FLOOR.



**SECTION A-A**