

Job Name: 25-1664 Springfield WWTP
 Job Location: Springfield, TN
 Contractor: Smith Contractors, Inc.

Plant: Beaver Dam

Tech: J. Coppage

2/2/2026 12:06:07 PM

PC: C. Goff



Structure ID: CC-SSMH-0+20.00

P1 MH096SBVFX-13F

MH MONOBASE w/YYPEX 13F, Custom Ht

- P5) 24" - CASTING HEIGHT - 6"
- P4) 48" - ECC XYPEX CONE w/ 24" HOLE - 36"
- P3) 48" - MH RISER w/YYPEX - 72"
- P2) 96" - MH Trans. Slab - 48in Hole ECC, Xypex - 17"
- P1) 96" - MH MONOBASE w/YYPEX 13F, Custom Ht - 96"
- 1) JOINT WRAP - 0.065"x6"x50' CONSEAL CS212
- 1) JOINT WRAP PRIMER - CONSEAL CS-75 (1 gal.)
- 1) SECONDARY POUR - Floor
- 1) 96" - Conseal CS-102 1.00" (Double)
- 2) 48" - Conseal CS-102 1.00" (Double)
- 1) Kor-N-Seal2 - S206-36
- 1) Kor-N-Seal2 - S206-30
- 1) Kor-N-Seal2 - S206-22L
- 513.44 SqFt) MASTERSEAL 610 - Two Coats [EXT]

**FIRST POUR
DRAWING**

Structure Notes:
 1. JBS-1155 BDWT SANITARY BY ICAST.
 2. PER ASTM C478 SPECIFICATIONS.
 3. CONCRETE = 5,000 PSI AT 28 DAYS.
 4. REINFORCING PER ASTM A615 (GRADE 60).
 - CONE (As .12)
 - TRANS. SLAB - AS SHOWN BY WINFORD PETRONE
 - RISER/WALLS (As .18)
 - FLOOR - AS SHOWN BY WINFORD PETRONE

WEIGHT: TOTAL - 33,434 LBS.
 FIRST POUR - 25,537 LBS
 SECOND POUR - 7,897 LBS

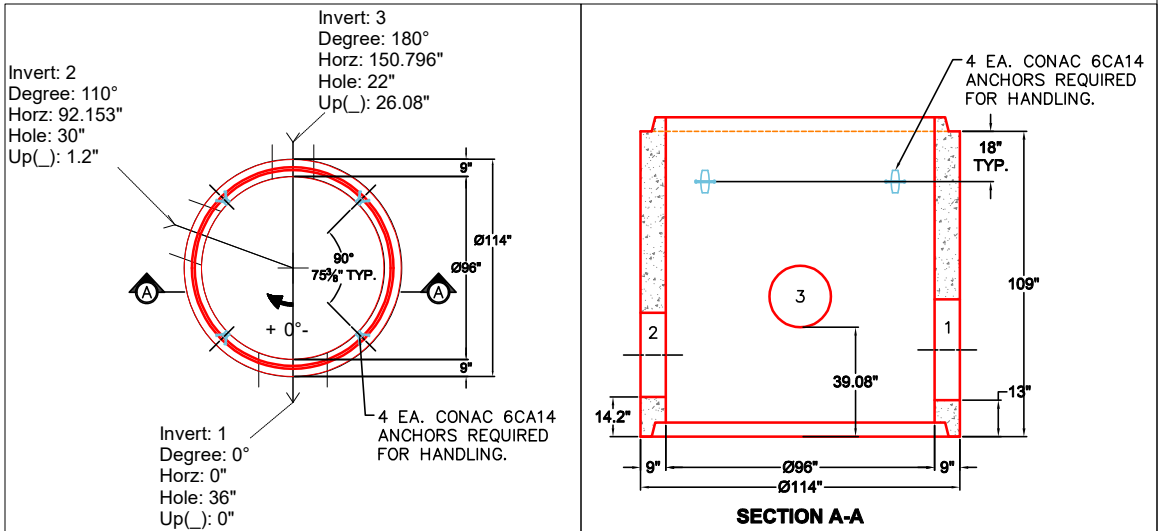
Structure Total: 49985 lb

Rim: 511.3' Rim to Invert: 18.9' Slack: 2.8' Sump: 3' Step Position:

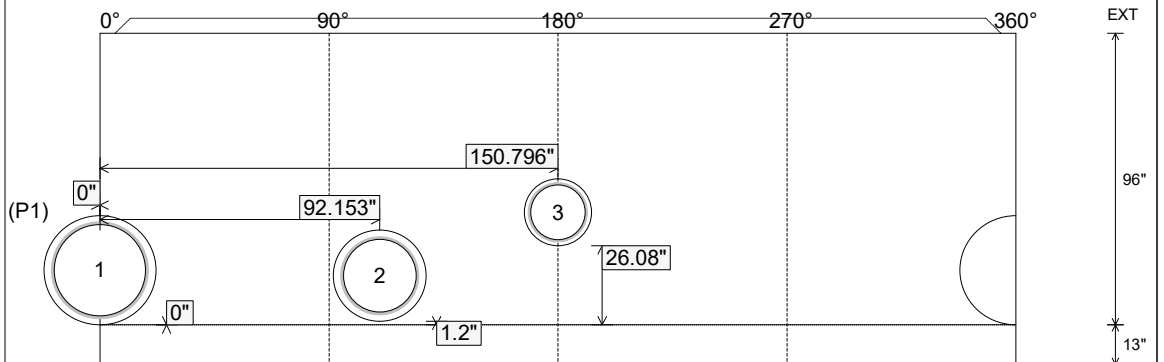
Position	Elev	Angle	Ext. (cw)	Pipe	Pipe OD	Connector	Hole	Horz Size	Up (L)	Offset
Invert 1	492.4'	0°	0"	30" DI	32"	Kor-N-Seal2 S206-36	36"	36.902"	0"	0"
Invert 2	492.5'	110°	109.432"	24" DI	25.75"	Kor-N-Seal2 S206-30	30"	30.511"	1.2"	0"
Invert 3	494.49'	180°	179.071"	18" DI	19.5"	Kor-N-Seal2 S206-22L	22"	22.197"	26.08"	0"

RIGHT-SIDE UP VIEW (int. dimensions)

SECTION A-A (int. dimensions)



INSIDE WALL DIMENSIONS



Coating (Int):
 Coating (Ext): MASTERSEAL 610

Seam Up: Tongue
 Seam Dn: n/a

Wall Thickness: 9"
 Floor Height: 13"

Height (Int): 96"
 Height (Ext): 8.54cu.yd

Weight (Net): 33434 lb
 Volume (Net): 8.54cu.yd

Job Name: 25-1664 Springfield WWTP
 Job Location: Springfield, TN
 Contractor: Smith Contractors, Inc.

Plant: Beaver Dam

Tech: J. Coppage

2/2/2026 12:06:07 PM

PC: C. Goff



Structure ID: CC-SSMH-0+20.00

P1 MH096SBVFX-13F

MH MONOBASE w/XYPEX 13F, Custom Ht

- P5) 24" - CASTING HEIGHT - 6"
- P4) 48" - ECC XYPEX CONE w/ 24" HOLE - 36"
- P3) 48" - MH RISER w/XYPEX - 72"
- P2) 96" - MH Trans. Slab - 48in Hole ECC, Xypex - 17"
- P1) 96" - MH MONOBASE w/XYPEX 13F, Custom Ht - 96"
- 1) JOINT WRAP - 0.065"x6"x50' CONSEAL CS212
- 1) JOINT WRAP PRIMER - CONSEAL CS-75 (1 gal.)
- 1) SECONDARY POUR - Floor
- 1) 96" - Conseal CS-102 1.00" (Double)
- 2) 48" - Conseal CS-102 1.00" (Double)
- 1) Kor-N-Seal2 - S206-36
- 1) Kor-N-Seal2 - S206-30
- 1) Kor-N-Seal2 - S206-22L

513.44 SqFt) MASTERSEAL 610 - Two Coats [EXT]

Structure Notes:
 1. JBS-1155 BDWT SANITARY BY ICAST.
 2. PER ASTM C478 SPECIFICATIONS.
 3. CONCRETE = 5,000 PSI AT 28 DAYS.
 4. REINFORCING PER ASTM A615 (GRADE 60).
 - CONE (As .12)
 - TRANS. SLAB - AS SHOWN BY WINFORD PETRONE
 - RISER/WALLS (As .18)
 - FLOOR - AS SHOWN BY WINFORD PETRONE

WEIGHT: TOTAL - 33,434 LBS.
 FIRST POUR - 25,537 LBS
 SECOND POUR - 7,897 LBS

**SECOND POUR
DRAWING**

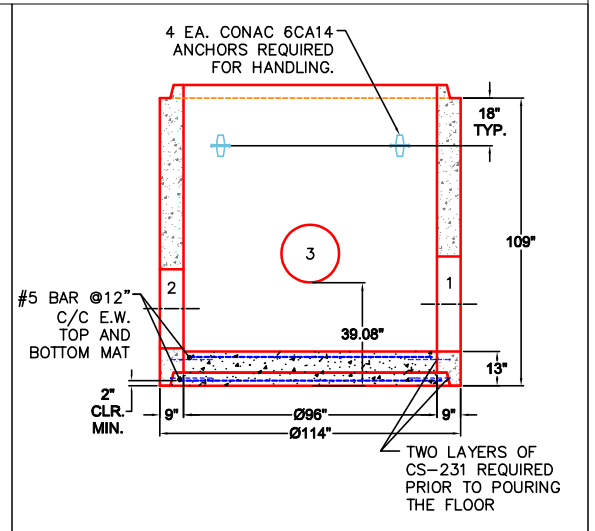
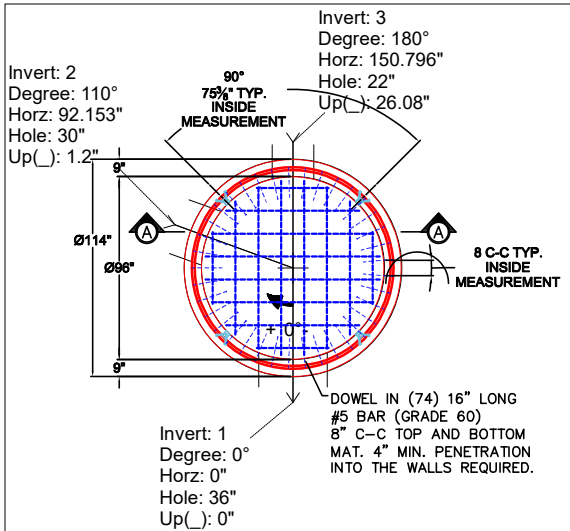
Structure Total: 49985 lb

Rim: 511.3' Rim to Invert: 18.9' Slack: 2.8' Sump: 3' Step Position:

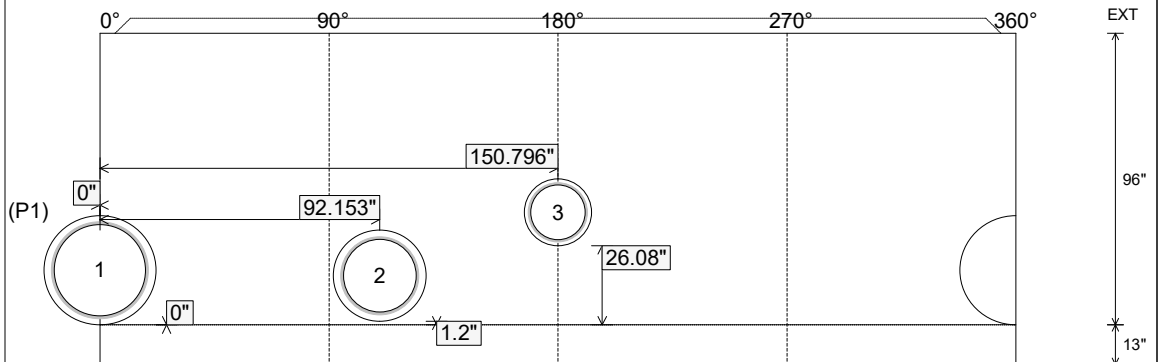
Position	Elev	Angle	Ext. (cw)	Pipe	Pipe OD	Connector	Hole	Horz Size	Up (L)	Offset
Invert 1	492.4'	0°	0"	30" DI	32"	Kor-N-Seal2 S206-36	36"	36.902"	0"	0"
Invert 2	492.5'	110°	109.432"	24" DI	25.75"	Kor-N-Seal2 S206-30	30"	30.511"	1.2"	0"
Invert 3	494.49'	180°	179.071"	18" DI	19.5"	Kor-N-Seal2 S206-22L	22"	22.197"	26.08"	0"

RIGHT-SIDE UP VIEW (int. dimensions)

SECTION A-A (int. dimensions)



INSIDE WALL DIMENSIONS



Coating (Int):
Coating (Ext): MASTERSEAL 610

Seam Up: Tongue
Seam Dn: n/a

Wall Thickness: 9"
Floor Height: 13"

Height (Int): 96"
Height (Ext): 109"

Weight (Net): 33434 lb
Volume (Net): 8.54cu.yd

Job Name: 25-1664 Springfield WWTP
 Job Location: Springfield, TN
 Contractor: Smith Contractors, Inc.

Plant: Beaver Dam

Tech: J. Coppage

2/2/2026 12:06:07 PM

PC: C. Goff



Structure ID: CC-SSMH-0+20.00

P1 MH096SBVFX-13F

MH MONOBASE w/XYPEX 13F, Custom Ht

- P5) 24" - CASTING HEIGHT - 6" 0 lb
- P4) 48" - ECC XYPEX CONE w/ 24" HOLE - 36" 2251 lb
- P3) 48" - MH RISER w/XYPEX - 72" 5030 lb
- P2) 96" - MH Trans. Slab - 48in Hole ECC, Xypex - 17" 9251 lb
- P1) 96" - MH MONOBASE w/XYPEX 13F, Custom Ht - 96" 33434 lb
- 1) JOINT WRAP - 0.065"x6"x50' CONSEAL CS212 0 lb
- 1) JOINT WRAP PRIMER - CONSEAL CS-75 (1 gal.) 0 lb
- 1) SECONDARY POUR - Floor 0 lb
- 1) 96" - Conseal CS-102 1.00" (Double) 0 lb
- 2) 48" - Conseal CS-102 1.00" (Double) 0 lb
- 1) Kor-N-Seal2 - S206-36 6 lb
- 1) Kor-N-Seal2 - S206-30 6 lb
- 1) Kor-N-Seal2 - S206-22L 6 lb
- 513.44 SqFt) MASTERSEAL 610 - Two Coats [EXT] 0 lb

Structure Notes:
 1. JBS-1155 BDWT SANITARY BY ICAST.
 2. PER ASTM C478 SPECIFICATIONS.
 3. CONCRETE = 5,000 PSI AT 28 DAYS.
 4. REINFORCING PER ASTM A615 (GRADE 60).
 - CONE (As .12)
 - TRANS. SLAB - AS SHOWN BY WINFORD PETRONE
 - RISER/WALLS (As .18)
 - FLOOR - AS SHOWN BY WINFORD PETRONE
INVERT CHANNEL DRAWING
FULL HEIGHT INVERT

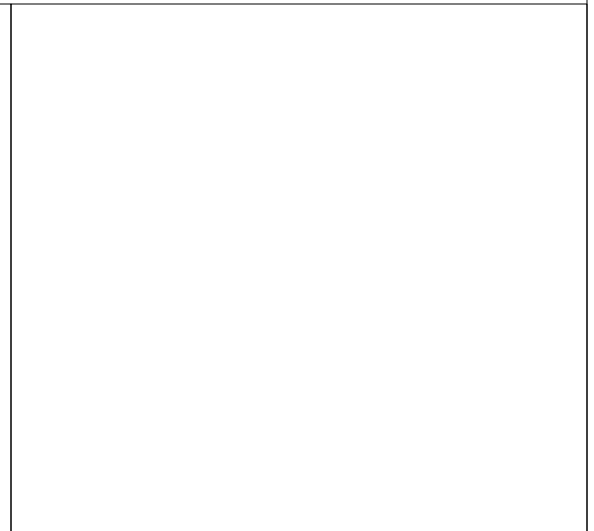
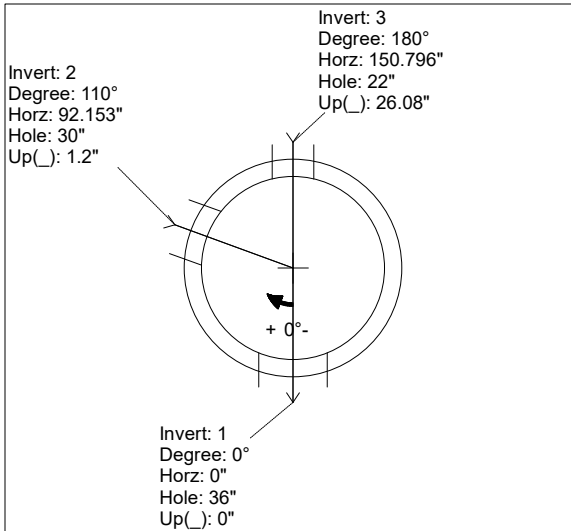
Structure Total: 49985 lb

Rim: 511.3' Rim to Invert: 18.9' Slack: 2.8" Sump: 3" Step Position:

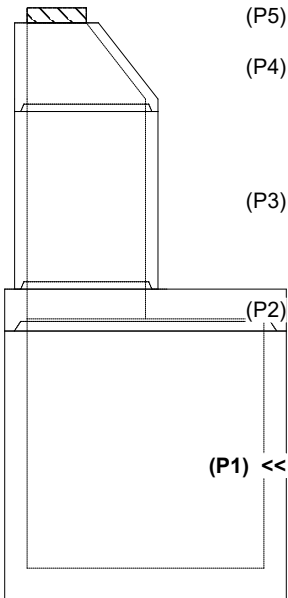
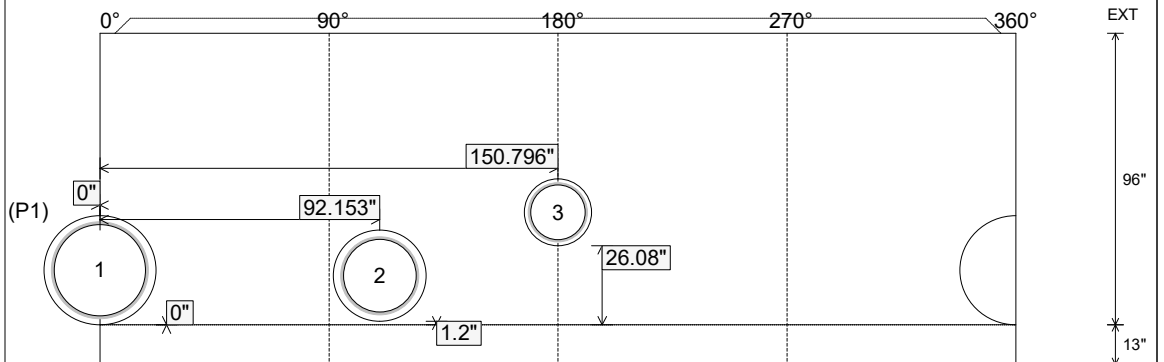
Position	Elev	Angle	Ext. (cw)	Pipe	Pipe OD	Connector	Hole	Horz Size	Up (L)	Offset
Invert 1	492.4'	0°	0"	30" DI	32"	Kor-N-Seal2 S206-36	36"	36.902"	0"	0"
Invert 2	492.5'	110°	109.432"	24" DI	25.75"	Kor-N-Seal2 S206-30	30"	30.511"	1.2"	0"
Invert 3	494.49'	180°	179.071"	18" DI	19.5"	Kor-N-Seal2 S206-22L	22"	22.197"	26.08"	0"

RIGHT-SIDE UP VIEW (int. dimensions)

UPSIDE-DOWN VIEW (int. dimensions)



INSIDE WALL DIMENSIONS



Coating (Int):
 Coating (Ext): MASTERSEAL 610

Seam Up: Tongue
 Seam Dn: n/a

Wall Thickness: 9"
 Floor Height: 13"

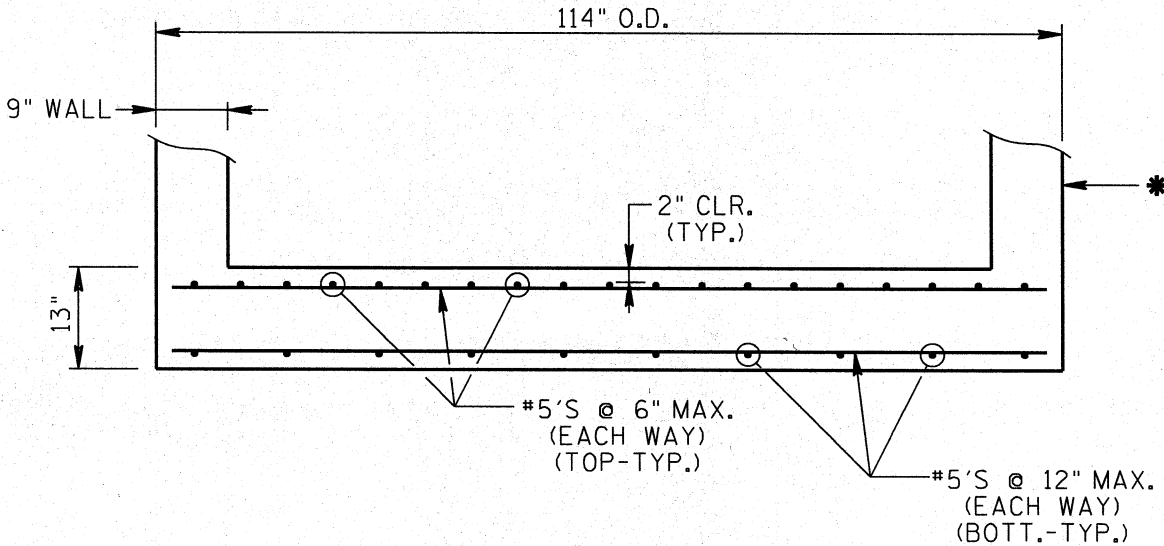
Height (Int): 96"
 Height (Ext): 109"

Weight (Net): 33434 lb
 Volume (Net): 8.54cu.yd

NOTE: SEE "PRECAST DESIGN SUBMITTAL..."
FOR SUMMARY OF BUILDING AND
DESIGN CODES, MATERIALS REQUIREMENTS,
AND DESIGN LOADS.

NOTE: SEE ICAST WORKING DRAWINGS FOR ADDITIONAL INFORMATION.

25-1664 - Springfield WWTP
Floor Reinforcement Information
CC-SSMH-0+20.00



BOTTOM UNIT SLAB FOR 96" MANHOLES

*: WALL REINF. TO BE IN ACCORDANCE WITH ASTM C478.

THIS DETAIL APPLICABLE TO:
CC-SSMH-0, COVER=9.50', OVERALL HT.=20.00'



SK-6

96" TRANSITION MANHOLES: BOTTOM SLAB
SPRINGFIELD WWTP INFRASTRUCTURE PRECAST