

Job Name: 25-1664 Springfield WWTP  
 Job Location: Springfield, TN  
 Contractor: Smith Contractors, Inc.

Plant: Beaver Dam

Tech: J. Coppinge

3/16/2026 11:58:40 AM

PC: C. Goff



**Structure ID: 60IN X 60IN IN-PLANT VV**

**P2 BX060606-08LD06X-S**

**BX FLAT LID 6"W w/30"x36" HATCH-Xypex**

- P3) 30" x 36" - HATCH (CAST FLUSH) - 3"
- P2) 60" x 60" - BX FLAT LID 6"W w/30"x36" HATCH-Xypex - 8"
- P1) 60" x 60" - BOX BASE 6inW, 6inF, Variable Ht.-Xypex - 46"
- 1) SECONDARY POUR - WALLS
- 1) 60" x 60" - SGL 1"x14.5' Butyl (2x)
- 3) PSX - 12-06 NYLO
- 1) Hole - 4

- 100 lb
- 2755 lb
- 8547 lb
- 0 lb
- 0 lb
- 24 lb
- 0 lb
- 0 lb
- Structure Total: 11426 lb

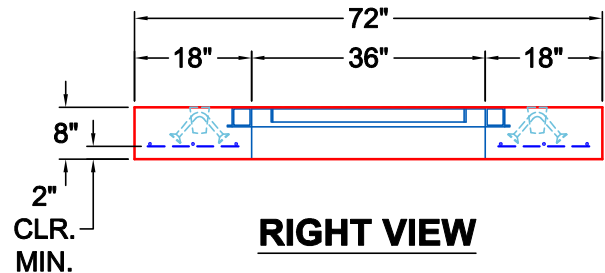
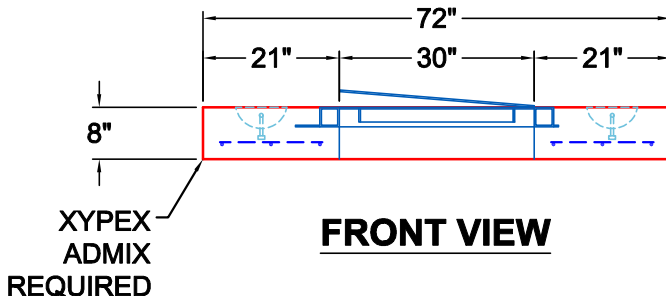
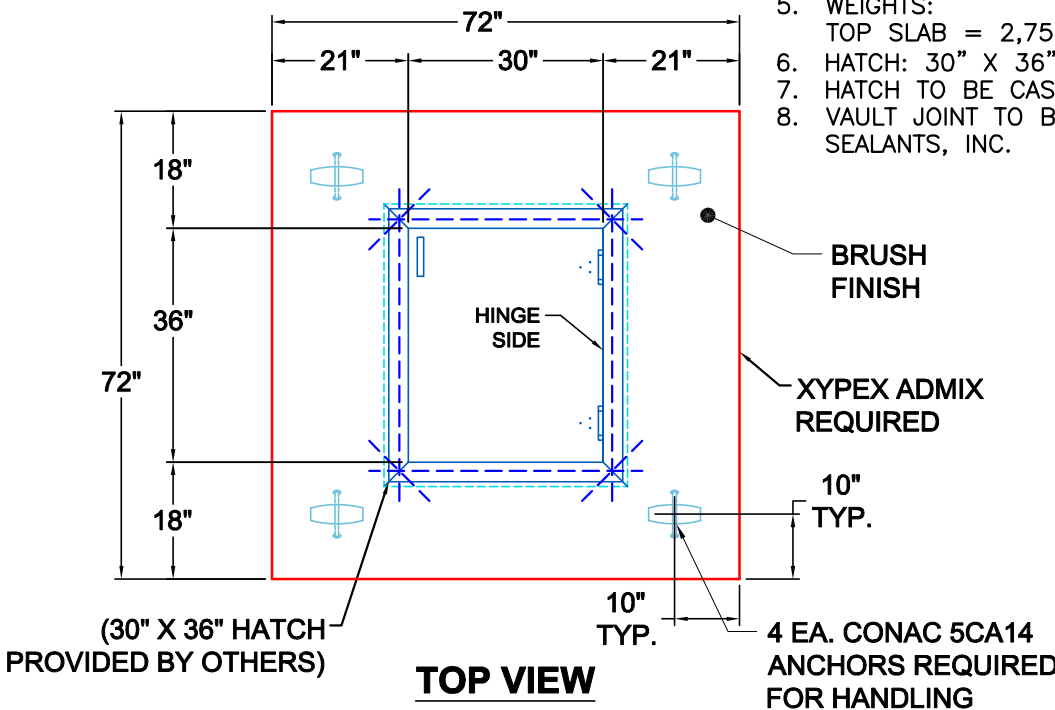
Structure Notes:

1. PER ASTM C913 SPECIFICATIONS.
2. CONCRETE = 5,000 PSI AT 28 DAYS.
3. NO INVERT CHANNEL.

REINFORCING PER ASTM A615 (GRADE 60).  
 - TOP SLAB (As .62) #5 BARS AT 6" C.C.E.W.  
 - WALLS (As .31) #5 BARS AT 12" C.C.E.W.  
 - FLOOR (As .31) #5 BARS AT 12" C.C.E.W.

GENERAL NOTES:

1. MANUFACTURED TO ASTM C-913 (LATEST REVISION).
2. CONCRETE: 5,000 PSI AT 28 DAYS.
3. XYPEX ADMIXTURE REQUIRED.
4. REINFORCING: #5 BAR @ 6" C-C E.W. PER ASTM A615 (GRADE 60).
5. WEIGHTS:  
TOP SLAB = 2,755 LBS
6. HATCH: 30" X 36" HATCH PROVIDED BY OTHERS.
7. HATCH TO BE CAST INTO THE TOP SLAB.
8. VAULT JOINT TO BE SEALED WITH CONCRETE SEALANTS, INC.



Coating (Int):  
 Coating (Ext):

Seam Up: Flat  
 Seam Dn: Flat

Wall Thickness: 6"

Height (Ext): 8"

Weight (Net): 2755 lb  
 Volume (Net): 0.7cu.yd