

Job Name: 25-1664 Springfield WWTP
 Job Location: Springfield, TN
 Contractor: Smith Contractors, Inc.

Plant: Beaver Dam

Tech: J. Coppage

3/16/2026 11:58:11 AM

PC: C. Goff



Structure ID: 60IN X 60IN IN-PLANT VV

P1 BX6060-06BAVFX

BOX BASE 6inW, 6inF, Variable Ht.-Xypex

- P3) 30" x 36" - HATCH (CAST FLUSH) - 3"
- P2) 60" x 60" - BX FLAT LID 6"W w/30"x36" HATCH-Xypex - 8"
- P1) 60" x 60" - BOX BASE 6inW, 6inF, Variable Ht.-Xypex - 46"
- 1) SECONDARY POUR - WALLS
- 1) 60" x 60" - SGL 1"x14.5' Butyl (2x)
- 3) PSX - 12-06 NYLO
- 1) Hole - 4

- 100 lb
- 2755 lb
- 8547 lb
- 0 lb
- 0 lb
- 24 lb
- 0 lb
-
- Structure Total: 11426 lb

Structure Notes:

1. PER ASTM C913 SPECIFICATIONS.
2. CONCRETE = 4,000 PSI AT 28 DAYS.
3. NO INVERT CHANNEL.

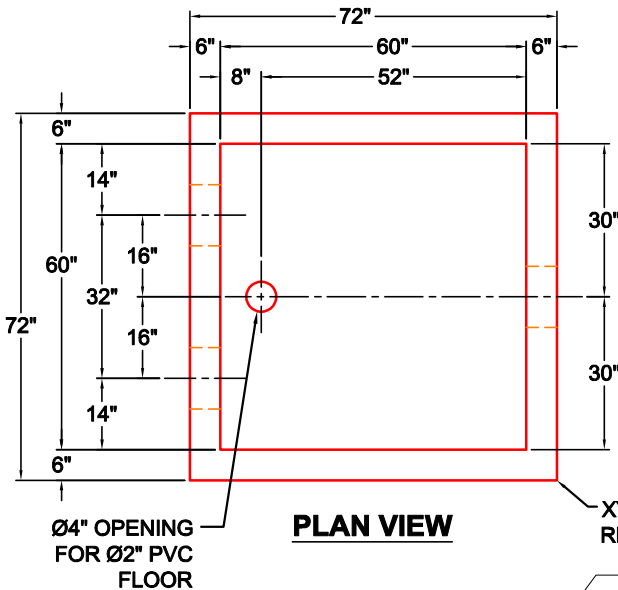
REINFORCING PER ASTM A615 (GRADE 60).
 - TOP SLAB (As .62) #5 BARS AT 6" C.C.E.W.
 - WALLS (As .31) #5 BARS AT 12" C.C.E.W.
 - FLOOR (As .31) #5 BARS AT 12" C.C.E.W.

Rim: 4.5' Rim to Invert: 4.5' Slack: 0" Sump: 0" Step Position:

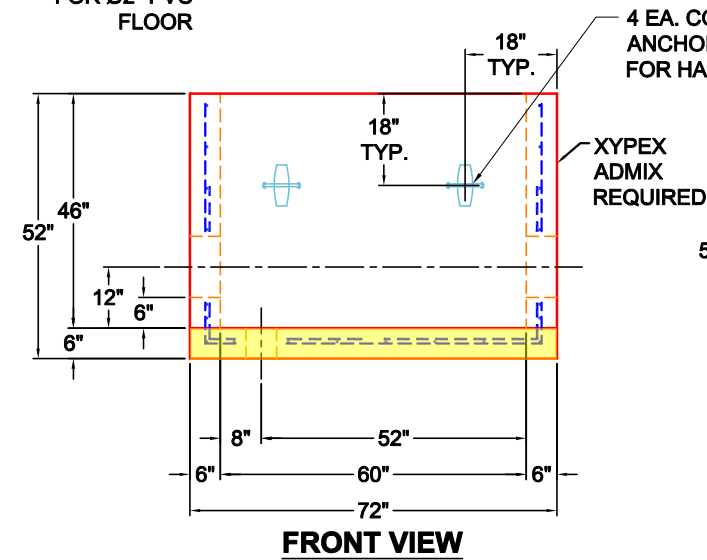
GENERAL NOTES:

1. MANUFACTURED TO ASTM C-913 (LATEST REVISION).
2. CONCRETE: 5,000 PSI AT 28 DAYS.
3. XYPEX ADMIXTURE REQUIRED.
4. REINFORCING: #5 BAR @ 12" C-C E.W. PER ASTM A615 (GRADE 60).
5. WEIGHT:
FIRST POUR = 2,596 LBS
 SECOND POUR = 5,951 LBS
 TOTAL WEIGHT = 8,547 LBS
6. VAULT JOINT TO BE SEALED WITH CONCRETE SEALANTS, INC. CS-102 ROLL BUTYL MASTIC. (SUPPLIED BY ICAST)
7. CAST TO PROVIDE 3X PSX 12-06 ND BOOTS FOR 6" DUCTILE PIPE.

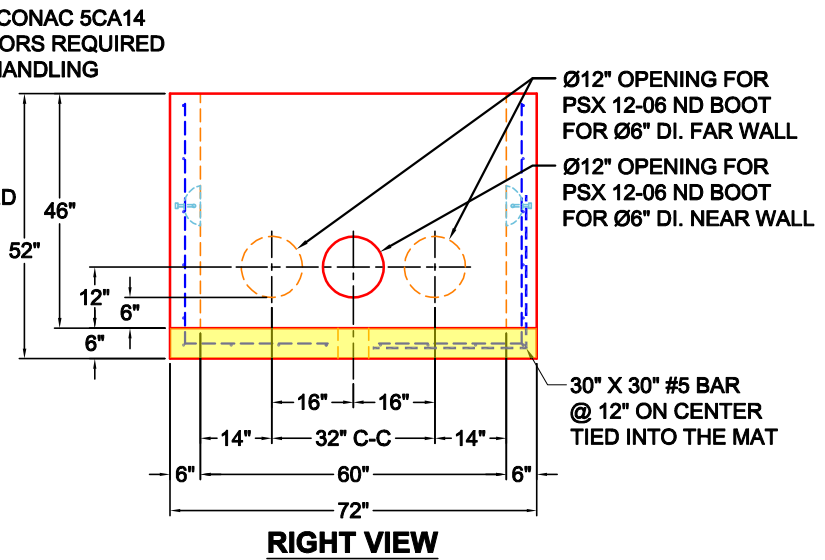
FIRST POUR DRAWING



PLAN VIEW



FRONT VIEW



RIGHT VIEW

Coating (Int): Coating (Ext):	Seam Up: Flat Seam Dn: n/a	Wall Thickness: 6" Floor Height: 6"	Height (Int): 46" Height (Ext): 52"	Weight (Net): 8547 lb Volume (Net): 2.18cu.yd
----------------------------------	-------------------------------	--	--	--

Job Name: 25-1664 Springfield WWTP
 Job Location: Springfield, TN
 Contractor: Smith Contractors, Inc.

Plant: Beaver Dam

Tech: J. Coppage

3/16/2026 11:58:11 AM

PC: C. Goff



Structure ID: 60IN X 60IN IN-PLANT VV

P1 BX6060-06BAVFX

BOX BASE 6inW, 6inF, Variable Ht.-Xypex

- P3) 30" x 36" - HATCH (CAST FLUSH) - 3"
- P2) 60" x 60" - BX FLAT LID 6"W w/30"x36" HATCH-Xypex - 8"
- P1) 60" x 60" - BOX BASE 6inW, 6inF, Variable Ht.-Xypex - 46"
- 1) SECONDARY POUR - WALLS
- 1) 60" x 60" - SGL 1"x14.5' Butyl (2x)
- 3) PSX - 12-06 NYLO
- 1) Hole - 4

- 100 lb
- 2755 lb
- 8547 lb
- 0 lb
- 0 lb
- 24 lb
- 0 lb
-
- 11426 lb

Structure Total:

Structure Notes:

1. PER ASTM C913 SPECIFICATIONS.
2. CONCRETE = 4,000 PSI AT 28 DAYS.
3. NO INVERT CHANNEL.

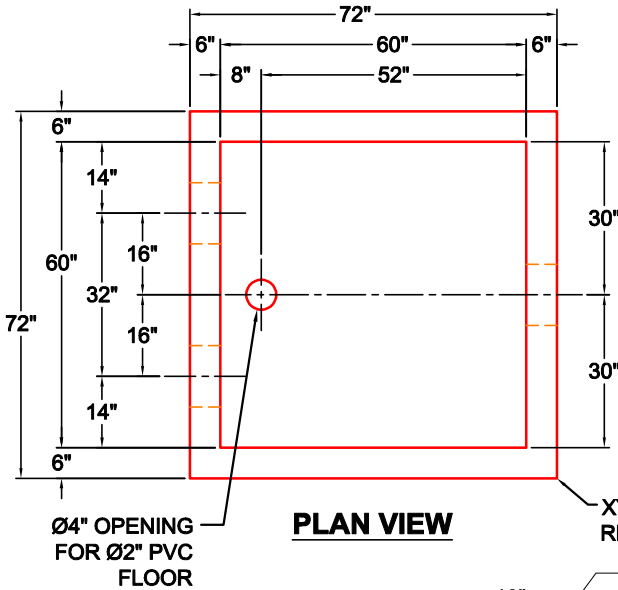
REINFORCING PER ASTM A615 (GRADE 60).
 - TOP SLAB (As .62) #5 BARS AT 6" C.C.E.W.
 - WALLS (As .31) #5 BARS AT 12" C.C.E.W.
 - FLOOR (As .31) #5 BARS AT 12" C.C.E.W.

Rim: 4.5' Rim to Invert: 4.5' Slack: 0" Sump: 0" Step Position:

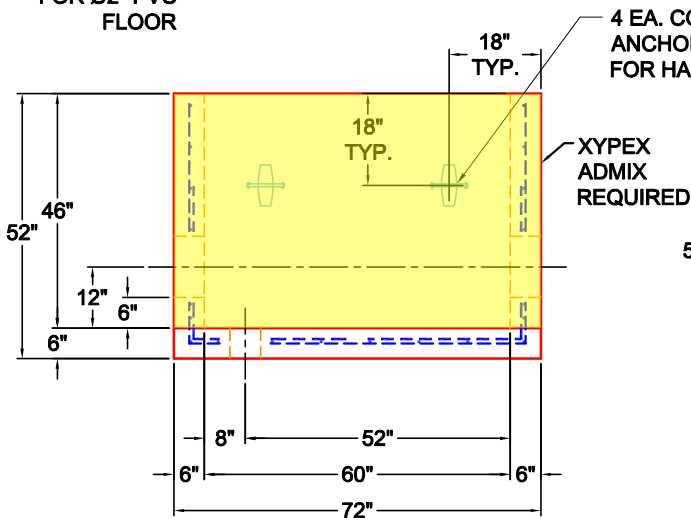
GENERAL NOTES:

1. MANUFACTURED TO ASTM C-913 (LATEST REVISION).
2. CONCRETE: 5,000 PSI AT 28 DAYS.
3. XYPEX ADMIXTURE REQUIRED.
4. REINFORCING: #5 BAR @ 12" C-C E.W. PER ASTM A615 (GRADE 60).
5. WEIGHT:
 FIRST POUR = 2,596 LBS
 SECOND POUR = 5,951 LBS
 TOTAL WEIGHT = 8,547 LBS
6. VAULT JOINT TO BE SEALED WITH CONCRETE SEALANTS, INC. CS-102 ROLL BUTYL MASTIC. (SUPPLIED BY ICAST)
7. CAST TO PROVIDE 3X PSX 12-06 ND BOOTS FOR 6" DUCTILE PIPE.

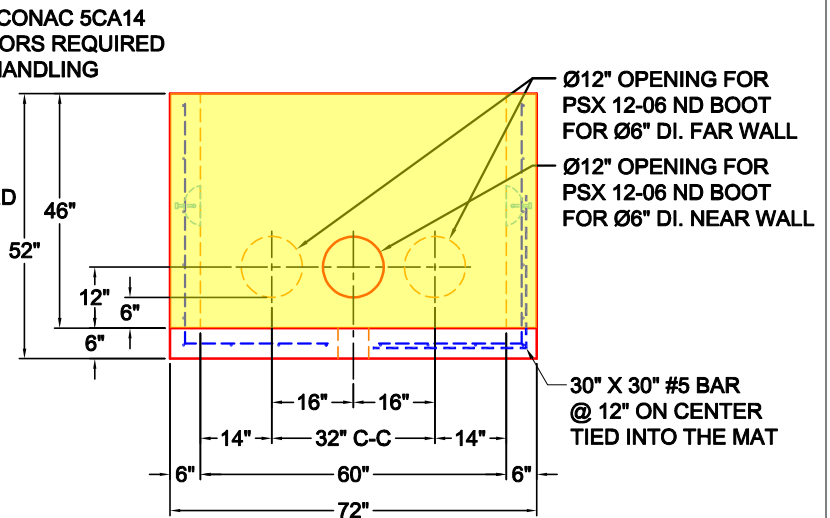
SECOND POUR DRAWING



PLAN VIEW



FRONT VIEW



RIGHT VIEW

Coating (Int): Coating (Ext):	Seam Up: Flat Seam Dn: n/a	Wall Thickness: 6" Floor Height: 6"	Height (Int): 46" Height (Ext): 52"	Weight (Net): 8547 lb Volume (Net): 2.18cu.yd
----------------------------------	-------------------------------	--	--	--