

Job Name: 25-1601 Spring Creek Parkway Phase 2 (Storm)
 Job Location: Clarksville, TN
 Contractor: Byard Construction, LLC

Plant: Beaver Dam
 3/18/2026 3:11:30 PM

Tech: S. Felletter
 PC: A. Chambers



Structure ID: CB-20C

P2 MH060LD10SP

MH FLAT TOP - TDOT NO 12 (28"x34" Hole) F/F

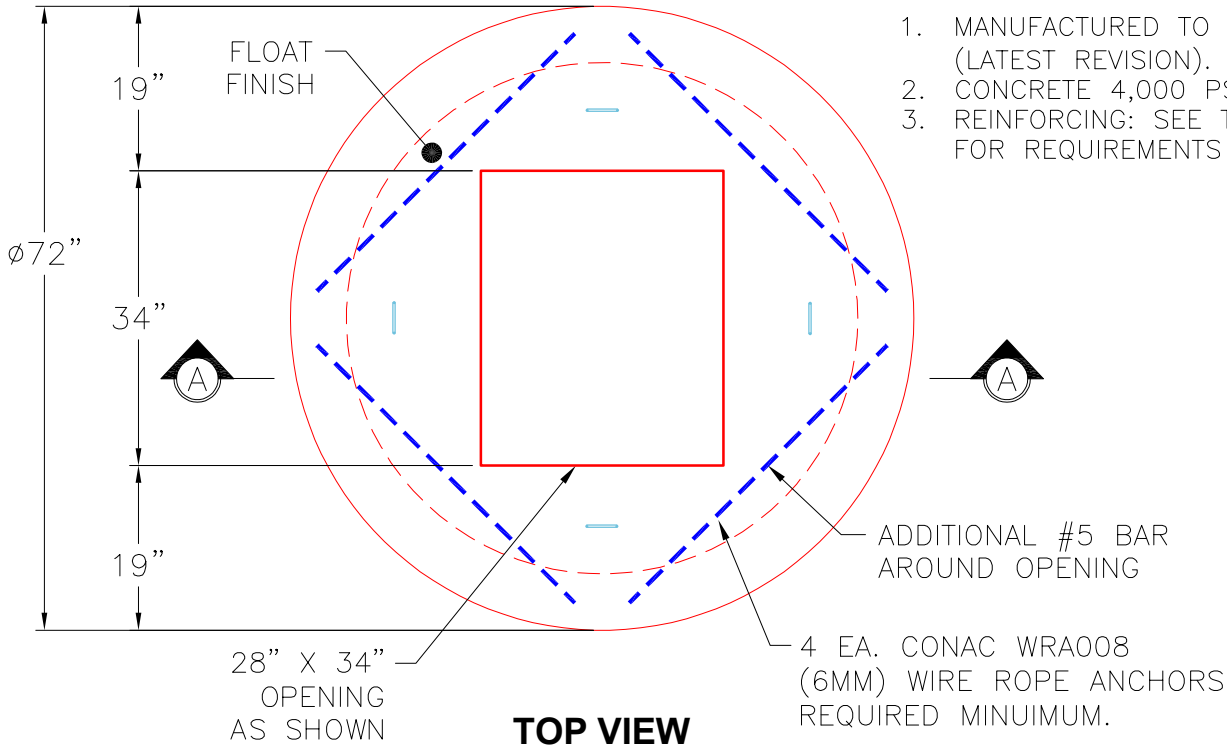
- P3) 28" x 34" - CASTING HEIGHT - 7"
- P2) 60" - MH FLAT TOP - TDOT NO 12 (28"x34" Hole) F/F - 10"
- P1) 60" - MH BASE F/n - 48"
- 1) 60" - Conseal CS-102 1.00"
- 1) 28" x 34" - Conseal CS-102 1.00"
- 2) Hole - 32
- 1) Hole - 26
- 1) Hole - 6

0 lb
 3417 lb
 6608 lb
 0 lb
 0 lb
 0 lb
 0 lb
 0 lb

Structure Total: 10025 lb

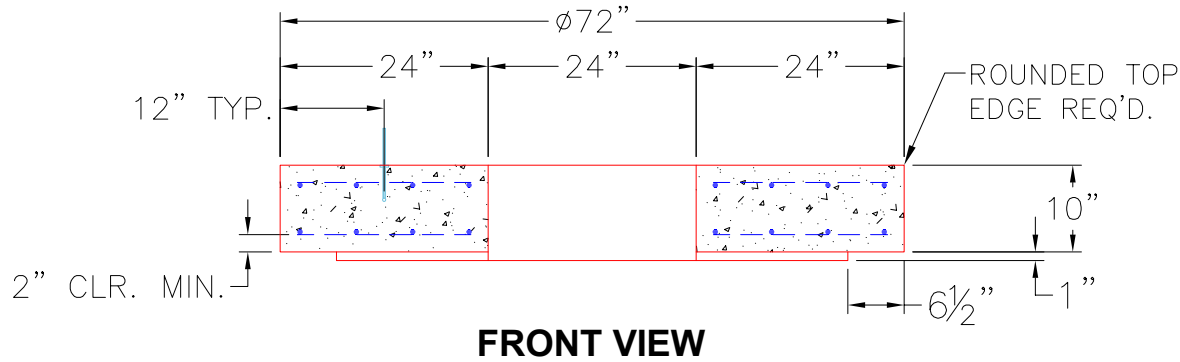
- Structure Notes:
1. PER TDOT D-CB-12RB / ASTM C478 SPEC'S.
 2. CONCRETE = 4,000 PSI AT 28 DAYS.
 3. NO INVERT CHANNEL.
 4. CASTING BY OTHERS (TNDOT TY. 12 - JBS 3123 MOD F/G/H).

- REINFORCING PER ASTM A615 (GRADE 60).
 ** PER TDOT STD DRAWING D-CB-12RB **
- TOP SLAB - DBL MAT #5 BARS.
 - RISER (As .18)
 - FLOOR (As .62) #5 BARS AT 6" C.C.E.W.



GENERAL NOTES:

1. MANUFACTURED TO ASTM C-478 (LATEST REVISION).
2. CONCRETE 4,000 PSI AT 28 DAYS.
3. REINFORCING: SEE TDOT D-CB-12RB FOR REQUIREMENTS



Coating (Int): Coating (Ext):	Seam Up: Flat Seam Dn: Flat	Wall Thickness: 6"	Height (Ext): 10"	Weight (Net): 3417 lb Volume (Net): 0.87cu.yd
----------------------------------	--------------------------------	--------------------	-------------------	--