

Job Name: 25-1601 Spring Creek Parkway Phase 2 (Storm)
 Job Location: Clarksville, TN
 Contractor: Byard Construction, LLC

Plant: Beaver Dam
 3/18/2026 8:50:51 AM

Tech: S. Felletter
 PC: A. Chambers



Structure ID: CB-18

P2 BX036096-10LD06W-SP

BX FLAT TOP 6"W - TDOT NO 14 (2-28"x34" HOLES)

- P3) 28" x 34" - CASTING HEIGHT - 7"
- P2) 36" x 96" - BX FLAT TOP 6"W - TDOT NO 14 (2-28"x34" HOLES) F/F - 10"
- P1) 36" x 96" - BOX BASE 6inW, 6inF, Variable Ht F/n - 51"
- 1) 36" x 96" - Conseal CS-102 1.00"
- 1) 28" x 34" - Conseal CS-102 1.00"
- 2) Hole - 26
- 1) Hole - 25
- 1) Hole - 6

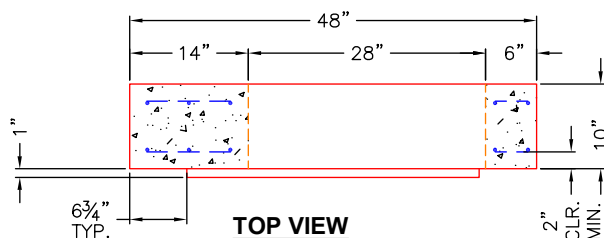
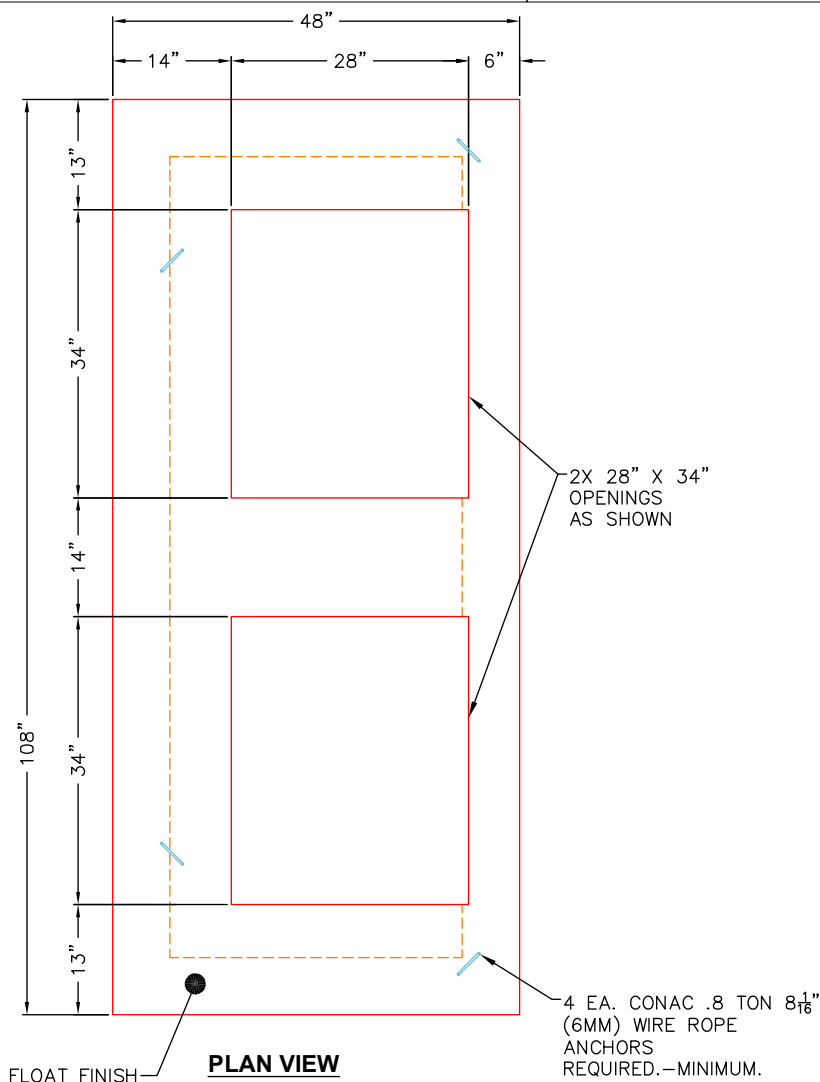
0 lb
 2752 lb
 9209 lb
 0 lb
 0 lb
 0 lb
 0 lb
 0 lb
 0 lb
 11961 lb

Structure Total:

Structure Notes:

1. PER TDOT D-CB-14P / ASTM C913 SPEC'S.
2. CONCRETE = 4,000 PSI AT 28 DAYS.
3. CASTING BY OTHERS (TDOT TY.14 - JBS 3123 MOD F/G/H).

REINFORCING PER ASTM A615 (GRADE 60).
 ** PER TDOT STD DRAWING D-CB-14P **
 - TOP SLAB - DBL MAT #5 BARS.
 - WALLS (As .77) #5 BARS AT 5" C.C.E.W.
 - FLOOR (As .47) #5 BARS AT 8" C.C.E.W.



Coating (Int):
 Coating (Ext):

Seam Up: Flat
 Seam Dn: Flat

Wall Thickness: 6"

Height (Ext): 10"

Weight (Net): 2752 lb
 Volume (Net): 0.7cu.yd