

Job Name: 25-1575 Henderson Runway Rehab & Extension
 Job Location: Henderson, KY
 Contractor: Double A Services, Inc.

Plant: Beaver Dam
 9/22/2025 3:25:47 PM

Tech: J. Horsley
 PC: J. Jarvis



Structure ID: 001 (60x60) PRF.2-SCH.1 156+59

P2 BX060060-12LD10-S

BX FLAT LID 10"W w/36"x48" HOLE F/F

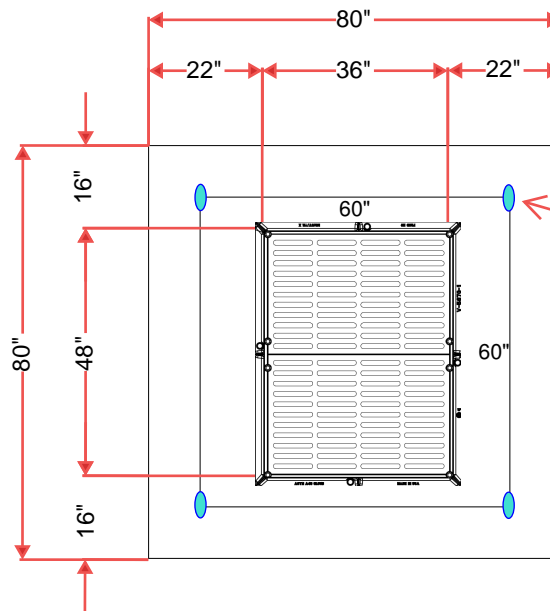
- P3) 36" x 48" - CASTING HEIGHT - 0"
- P2) 60" x 60" - BX FLAT LID 10"W w/36"x48" HOLE F/F - 12"
- P1) 60" x 60" - BOX BASE 10inW, 12inF, Variable Ht F/n - 45"
- 1) 60" x 60" - Conseal CS-102 1.00"
- 1) Hole - 40 x 28

0 lb
 4704 lb
 16279 lb
 0 lb
 0 lb

 Structure Total: 20984 lb

- Structure Notes:**
1. PER ASTM C913 SPECIFICATIONS.
 2. CONCRETE = 4,000 PSI AT 28 DAYS.
 3. NO INVERT CHANNEL.
 4. CASTING BY ICAST (EJ V5670 EHD DI F/G)

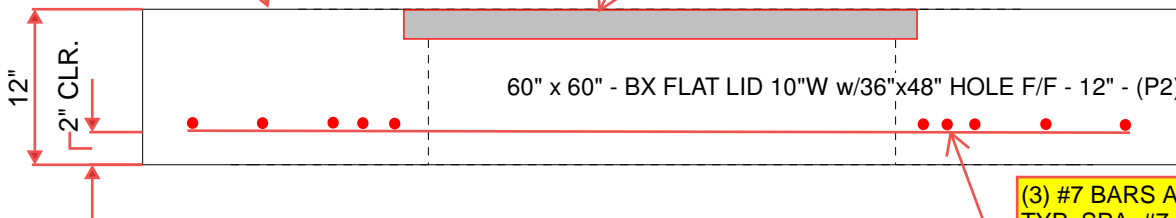
REINFORCING PER ASTM A615 (GRADE 60).
 - TOP SLAB PER DETAILS 2A & 2B ON SHEET CC-502
 - WALLS PER DETAILS 2A & 2B ON SHEET CC-502
 - FLOOR PER DETAILS 2A & 2B ON SHEET CC-502



4ea - CONAC
 5CA14 LIFTERS
 12" FROM EACH SIDE

LITE BRUSH FINISH
 ON TOP SURFACE

EJ V5670 EHD, DI
 FRAME & GRATES
 CAST INTO TOP SLAB.



(3) #7 BARS AT 3" C/C
 TYP. SPA. #7 BARS AT 6" C/C
 SEE ATTACHED SHEET CC-502

Coating (Int):
 Coating (Ext):

Seam Up: Flat
 Seam Dn: Flat

Wall Thickness: 10"

Height (Ext): 12"

Weight (Net): 4704 lb
 Volume (Net): 1.2cu.yd