

Job Name: 25-1511 Halfhill Estates Ph.3
 Job Location: Nicholasville, KY
 Contractor: Perdue Environmental Contracting Co., Inc.

Plant: Beaver Dam

Tech: J. Horsley

12/16/2025 4:35:15 PM

PC: J. Jarvis



Structure ID: MH 1901

P1 BX6060-08BA72

BOX BASE 8inW, 8inF F/n

- P5) 24" x 120" - CB INLET KY A 10' TOP LEFT F/G - 10"
- P4) 24" x 120" - CB INLET KY A 10' BOTTOM LEFT T/G - 18"
- P3) 24" x 36" - BOX RISER 8inW, Variable Ht T/G - 35"
- P2) 60" x 60" - CB FT REDUCER 24"X36" HOLE T/F - 8"
- P1) 60" x 60" - BOX BASE 8inW, 8inF F/n - 72"
- 1) CASTING - HOE KY-206 F/C (KY TY1)
- 1) 60" x 60" - Conseal CS-102 1.00"
- 2) 24" x 36" - Conseal CS-102 1.00"
- 1) Hole - 50
- 1) Hole - 44
- 1) Hole - 30

- 3400 lb
- 5270 lb
- 3571 lb
- 3297 lb
- 14194 lb
- 206 lb
- 0 lb
- 0 lb
- 0 lb
- 0 lb
- 0 lb

Structure Notes:
 ** KYTC STATE PROJECT **
 1. PER KYTC CBI TYPE A / ASTM C913 SPEC'S.
 2. CONCRETE = 4,000 PI AT 28 DAYS.
 3. NO INVERT CHANNEL.
 4. CASTING BY ICAST (HOE KY-206 KY TY.1 F/C)
 CAST INTO TOP SLAB.

REINFORCING PER ASTM A615 (GRADE 60).
 - TOP PHASE (As .62) #5 BARS AT 6" C.C.E.W.
 - TRANS. SLAB (As .62) #5 BARS AT 6" C.C.E.W (DBL MAT)
 - WALLS (As .31) #5 BARS AT 12" C.C.E.W.
 - FLOOR (As .31) #5 BARS AT 12" C.C.E.W.

Structure Total: 29938 lb

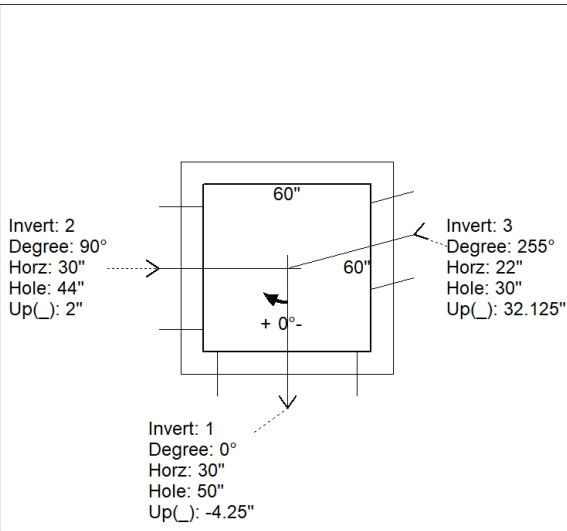
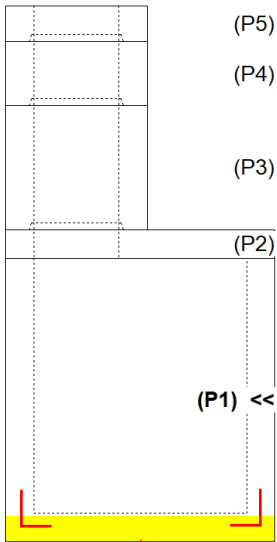
Rim: 878.95' Rim to Invert: 11.95' Slack: 0.4" Sump: 0" Step Position:

Position	Elev	Angle	Ext. (cw)	Pipe	Pipe OD	Connector	Hole	Horz Size	Up ()	Offset
Invert 1	867'	0°	38"	42" HDPE	47.7"	Hole 50	50"	50"	-4.25"	0"
Invert 2	867.5'	90°	38"	36" HDPE	41.7"	Hole 44	44"	44"	2"	0"
Invert 3	869.93'	255°	27.875"	24" HDPE	27.8"	Hole 30	30"	31.058"	32.125"	0"
Invert 4										
Invert 5										
Invert 6										
Invert 7										
Invert 8										

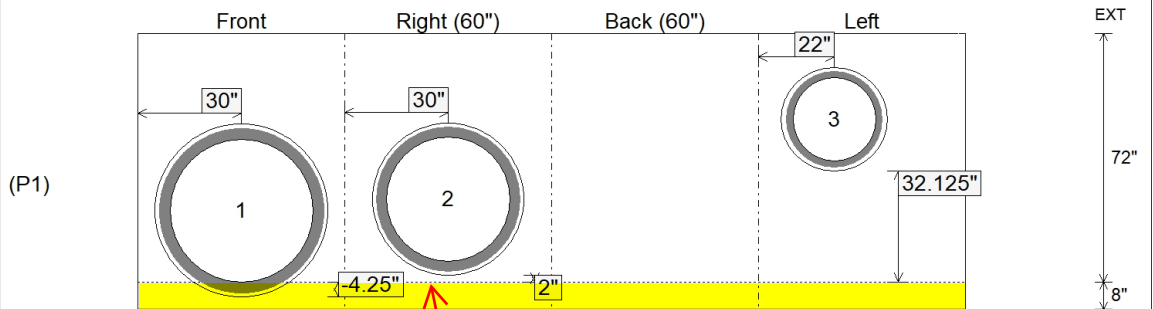
RIGHT-SIDE UP VIEW (int. dimensions)

UPSIDE-DOWN VIEW (int. dimensions)

**1ST POUR (FLOOR) = 3,880 LBS
 2ND POUR (WALLS) = 10,314 LBS**



INSIDE WALL DIMENSIONS



**1ST POUR (FLOOR)
 STUB #5 L BARS OUT TOP
 OF FLOOR FOR
 CONNECTING WALLS**

PLACE CONSEAL CS-231 BETWEEN FLOOR & WALLS

Coating (Int): Coating (Ext):	Seam Up: Flat Seam Dn: n/a	Wall Thickness: 8" Floor Height: 8"	Height (Int): 72" Height (Ext): 80"	Weight (Net): 14194 lb Volume (Net): 3.63cu.yd
----------------------------------	-------------------------------	--	--	---

Job Name: 25-1511 Halfhill Estates Ph.3
 Job Location: Nicholasville, KY
 Contractor: Perdue Environmental Contracting Co., Inc.

Plant: Beaver Dam

Tech: J. Horsley

12/16/2025 4:35:15 PM

PC: J. Jarvis



Structure ID: MH 1901

P1A BX6060-08BA72

BOX BASE 8inW, 8inF F/n

- P5) 24" x 120" - CB INLET KY A 10' TOP LEFT F/G - 10"
- P4) 24" x 120" - CB INLET KY A 10' BOTTOM LEFT T/G - 18"
- P3) 24" x 36" - BOX RISER 8inW, Variable Ht T/G - 35"
- P2) 60" x 60" - CB FT REDUCER 24"X36" HOLE T/F - 8"
- P1) 60" x 60" - BOX BASE 8inW, 8inF F/n - 72"
- 1) CASTING - HOE KY-206 F/C (KY TY1)
- 1) 60" x 60" - Conseal CS-102 1.00"
- 2) 24" x 36" - Conseal CS-102 1.00"
- 1) Hole - 50
- 1) Hole - 44
- 1) Hole - 30

- 3400 lb
- 5270 lb
- 3571 lb
- 3297 lb
- 14194 lb
- 206 lb
- 0 lb
- 0 lb
- 0 lb
- 0 lb
- 0 lb

Structure Notes:
 ** KYTC STATE PROJECT **
 1. PER KYTC CBI TYPE A / ASTM C913 SPEC'S.
 2. CONCRETE = 4,000 PI AT 28 DAYS.
 3. NO INVERT CHANNEL.
 4. CASTING BY ICAST (HOE KY-206 KY TY.1 F/C)
 CAST INTO TOP SLAB.

REINFORCING PER ASTM A615 (GRADE 60).
 - TOP PHASE (As .62) #5 BARS AT 6" C.C.E.W.
 - TRANS. SLAB (As .62) #5 BARS AT 6" C.C.E.W (DBL MAT)
 - WALLS (As .31) #5 BARS AT 12" C.C.E.W.
 - FLOOR (As .31) #5 BARS AT 12" C.C.E.W.

Structure Total: 29938 lb

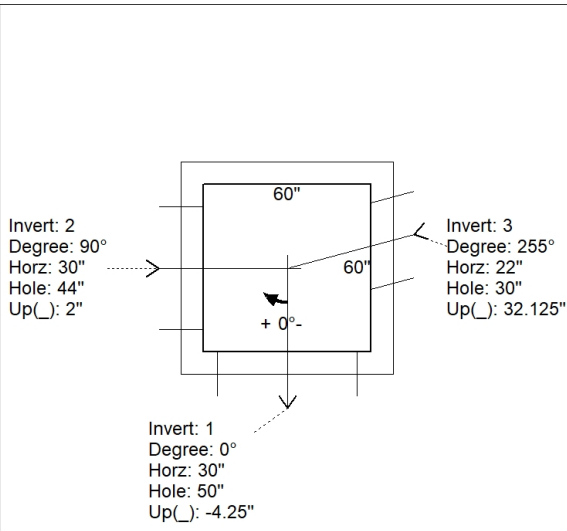
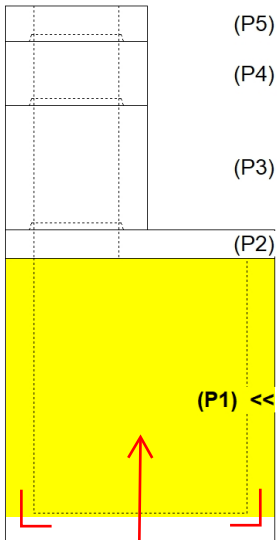
Rim: 878.95' Rim to Invert: 11.95' Slack: 0.4" Sump: 0" Step Position:

Position	Elev	Angle	Ext. (cw)	Pipe	Pipe OD	Connector	Hole	Horz Size	Up ()	Offset
Invert 1	867'	0°	38"	42" HDPE	47.7"	Hole 50	50"	50"	-4.25"	0"
Invert 2	867.5'	90°	38"	36" HDPE	41.7"	Hole 44	44"	44"	2"	0"
Invert 3	869.93'	255°	27.875"	24" HDPE	27.8"	Hole 30	30"	31.058"	32.125"	0"
Invert 4										
Invert 5										
Invert 6										
Invert 7										
Invert 8										

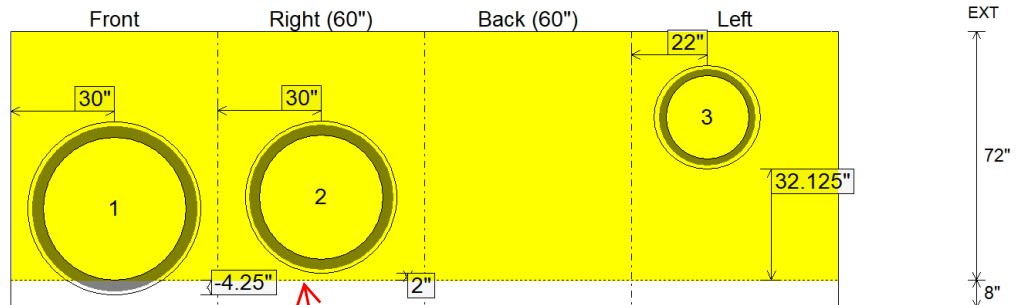
RIGHT-SIDE UP VIEW (int. dimensions)

UPSIDE-DOWN VIEW (int. dimensions)

**1ST POUR (FLOOR) = 3,880 LBS
 2ND POUR (WALLS) = 10,314 LBS**



INSIDE WALL DIMENSIONS



2ND POUR (WALLS)

PLACE CONSEAL CS-231 BETWEEN FLOOR & WALLS

Coating (Int): Coating (Ext):	Seam Up: Flat Seam Dn: n/a	Wall Thickness: 8" Floor Height: 8"	Height (Int): 72" Height (Ext): 80"	Weight (Net): 14194 lb Volume (Net): 3.63cu.yd
----------------------------------	-------------------------------	--	--	---