

Structure ID: DBI 2202

P1 BX24300808VF

BOX BASE 8inW, 8inF, Variable Ht F/n

P2) 24" x 30" - CASTING HEIGHT - 3.75"
 P1) 24" x 30" - BOX BASE 8inW, 8inF, Variable Ht F/n - 31"
 1) CASTING - HOE KY-206 F/C (KY TY1)
 1) 24" x 30" - SGL 1"x14.5' Butyl
 1) Hole - 20

0 lb
 3938 lb
 206 lb
 0 lb
 0 lb

 Structure Total: 4144 lb

Structure Notes:
****KYTC STATE PROJECT****
 1. KYTC DBI TYPE 11 / ASTM C-913 SPEC'S.
 2. CONCRETE = 4,000 PSI AT 28 DAYS.
 3. NO INVERT CHANNEL.
 4. NO STEPS.
 5. CASTING BY ICAST (HOE 460-11 F/G)

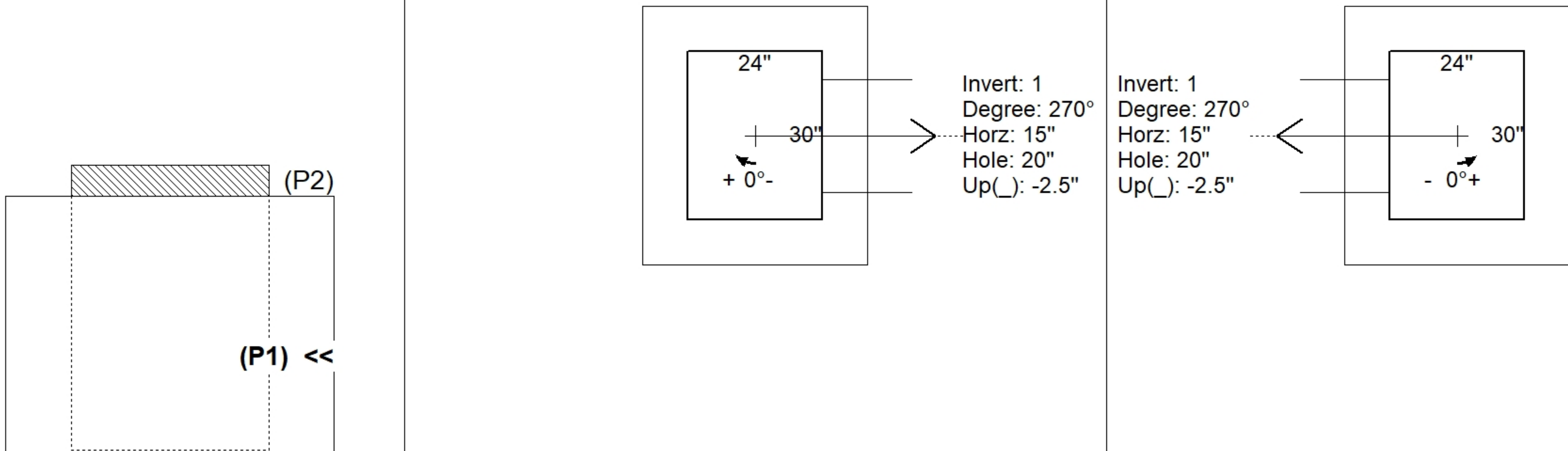
REINFORCING PER ASTM A615 (GRADE 60).
 - WALLS (As .31) #5 BARS AT 12" C.C.E.W..
 - FLOOR (As .31) #5 BARS AT 12" C.C.E.W.

Rim: 882.24' Rim to Invert: 2.92' Slack: 0.29" Sump: 0" Step Position:

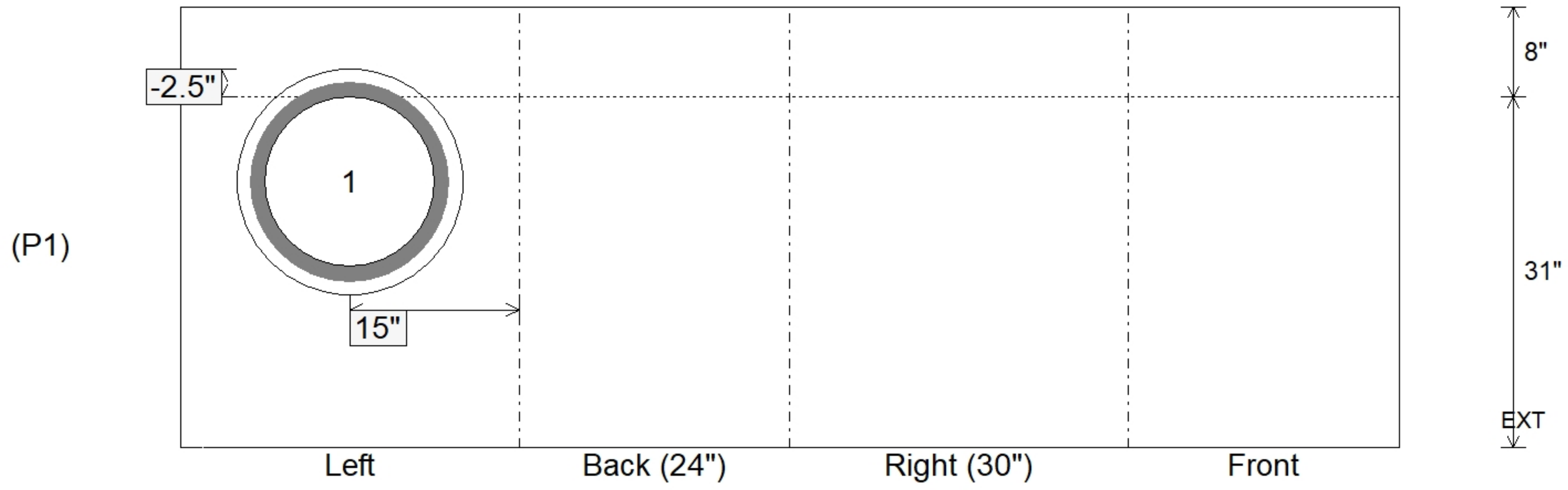
Position	Elev	Angle	Ext. (cw)	Pipe	Pipe OD	Connector	Hole	Horz Size	Up ()	Offset
Invert 1	879.32'	270°	23"	15" HDPE	17.6"	Hole 20	20"	20"	-2.5"	0"
Invert 2										
Invert 3										
Invert 4										
Invert 5										
Invert 6										
Invert 7										
Invert 8										

RIGHT-SIDE UP VIEW (int. dimensions)

UPSIDE-DOWN VIEW (int. dimenions)



INSIDE WALL DIMENSIONS



Coating (Int): Coating (Ext):	Seam Up: Flat Seam Dn: n/a	Wall Thickness: 8" Floor Height: 8"	Height (Int): 31" Height (Ext): 39"	Weight (Net): 3938 lb Volume (Net): 1.01cu.yd
----------------------------------	-------------------------------	--	--	--