

Structure ID: CBI 2001

P3 BX2436-08R-VH

BOX RISER 8inW, Variable Ht T/G

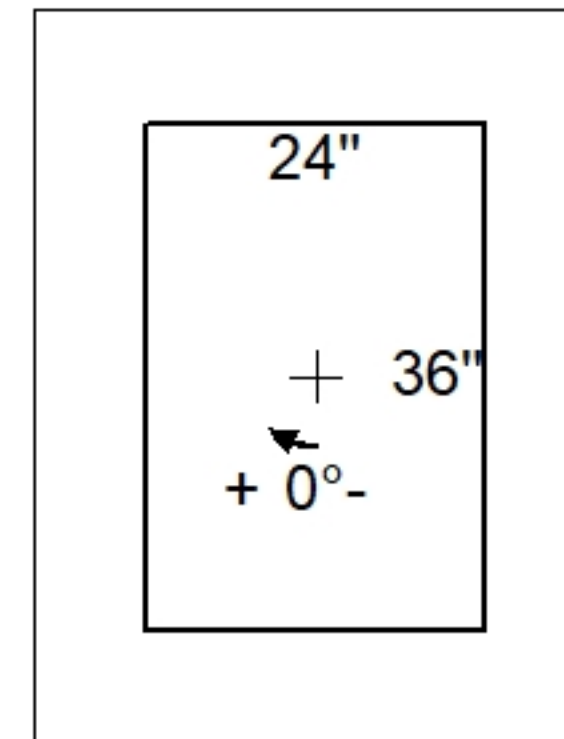
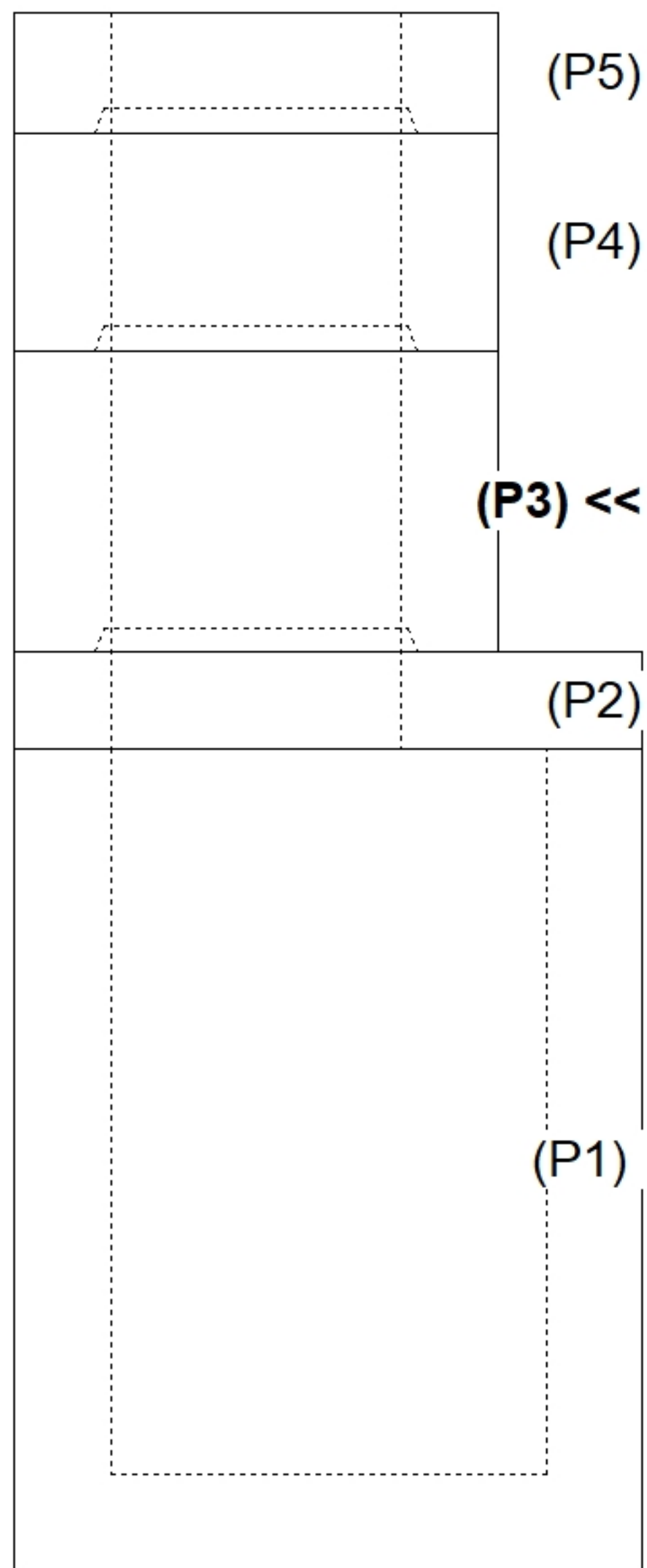
P5) 24" x 120" - CB INLET KY A 10' TOP LEFT F/G - 10" P4) 24" x 120" - CB INLET KY A 10' BOTTOM LEFT T/G - 18" P3) 24" x 36" - BOX RISER 8inW, Variable Ht T/G - 25" P2) 36" x 36" - CB TRANSITION SLAB 24"X36" HOLE T/F - 8" P1) 36" x 36" - BOX BASE 8inW, 8inF F/n - 60" 1) CASTING - HOE KY-206 F/C (KY TY1) 1) 36" x 36" - Conseal CS-102 1.00" 2) 24" x 36" - Conseal CS-102 1.00" 2) Hole - 30	3400 lb 5270 lb 2551 lb 1235 lb 7925 lb 206 lb 0 lb 0 lb 0 lb ----- 20586 lb	Structure Notes: ** KYTC STATE PROJECT ** 1. PER KYTC CBI TYPE A / ASTM C913 SPEC'S. 2. CONCRETE = 4,000 PI AT 28 DAYS. 3. NO INVERT CHANNEL. REINFORCING PER ASTM A615 (GRADE 60). - TOP PHASE (As .62) #5 BARS AT 6" C.C.E.W. - TRANS. SLAB (As .62) #5 BARS AT 6" C.C.E.W (DBL MAT) - WALLS (As .31) #5 BARS AT 12" C.C.E.W. - FLOOR (As .31) #5 BARS AT 12" C.C.E.W.
---	--	--

Structure Total: 20586 lb

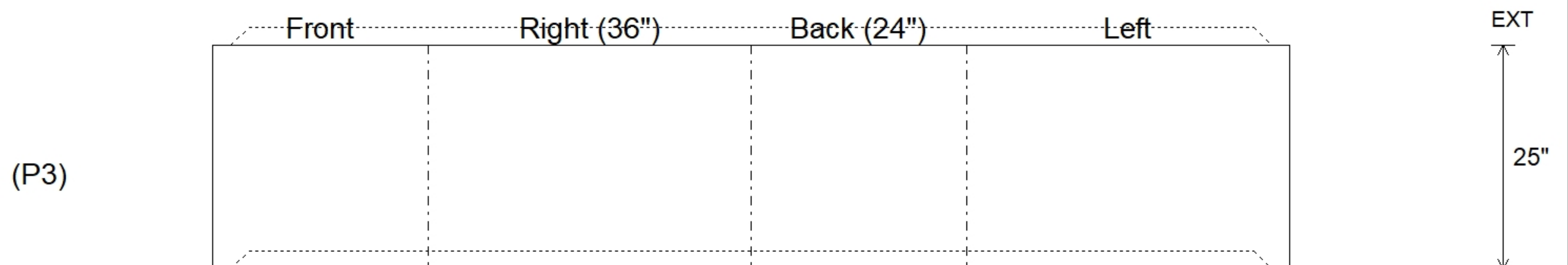
Rim: 881.15' Rim to Invert: 10.11' Slack: 0.32" Sump: 0" Step Position:

Position	Elev	Angle	Ext. (cw)	Pipe	Pipe OD	Connector	Hole	Horz Size	Up (L)	Offset
Invert 1										
Invert 2										
Invert 3										
Invert 4										
Invert 5										
Invert 6										
Invert 7										
Invert 8										

RIGHT-SIDE UP VIEW (int. dimensions)



INSIDE WALL DIMENSIONS



Coating (Int):	Seam Up: Tongue Seam Dn: Groove	Wall Thickness: 8" Floor Height: 0"	Height (Int): 25" Height (Ext): 25"	Weight (Net): 2551 lb Volume (Net): 0.65cu.yd
----------------	------------------------------------	--	--	--