

Job Name: 25-1511 Halfhill Estates Ph.3  
 Job Location: Nicholasville, KY  
 Contractor: Perdue Environmental Contracting Co., Inc.

Plant: Beaver Dam

Tech: J. Horsley

12/16/2025 4:37:01 PM

PC: J. Jarvis



**Structure ID: CBI 1906**

**P2 BX048036-08TS024036**

**CB FT REDUCER 24"X36" HOLE T/F**

- P5) 24" x 120" - CB INLET KY A 10' TOP LEFT F/G - 10"
- P4) 24" x 120" - CB INLET KY A 10' BOTTOM LEFT T/G - 18"
- P3) 24" x 36" - BOX RISER 8inW T/G - 18"
- P2) 48" x 36" - CB FT REDUCER 24"X36" HOLE T/F - 8"
- P1) 48" x 36" - BOX BASE 8inW, 8inF, Variable Ht F/n - 46"
- 1) CASTING - HOE KY-206 F/C (KY TY1)
- 2) 24" x 36" - Conseal CS-102 1.00"
- 2) Hole - 30
- 1) Hole - 24

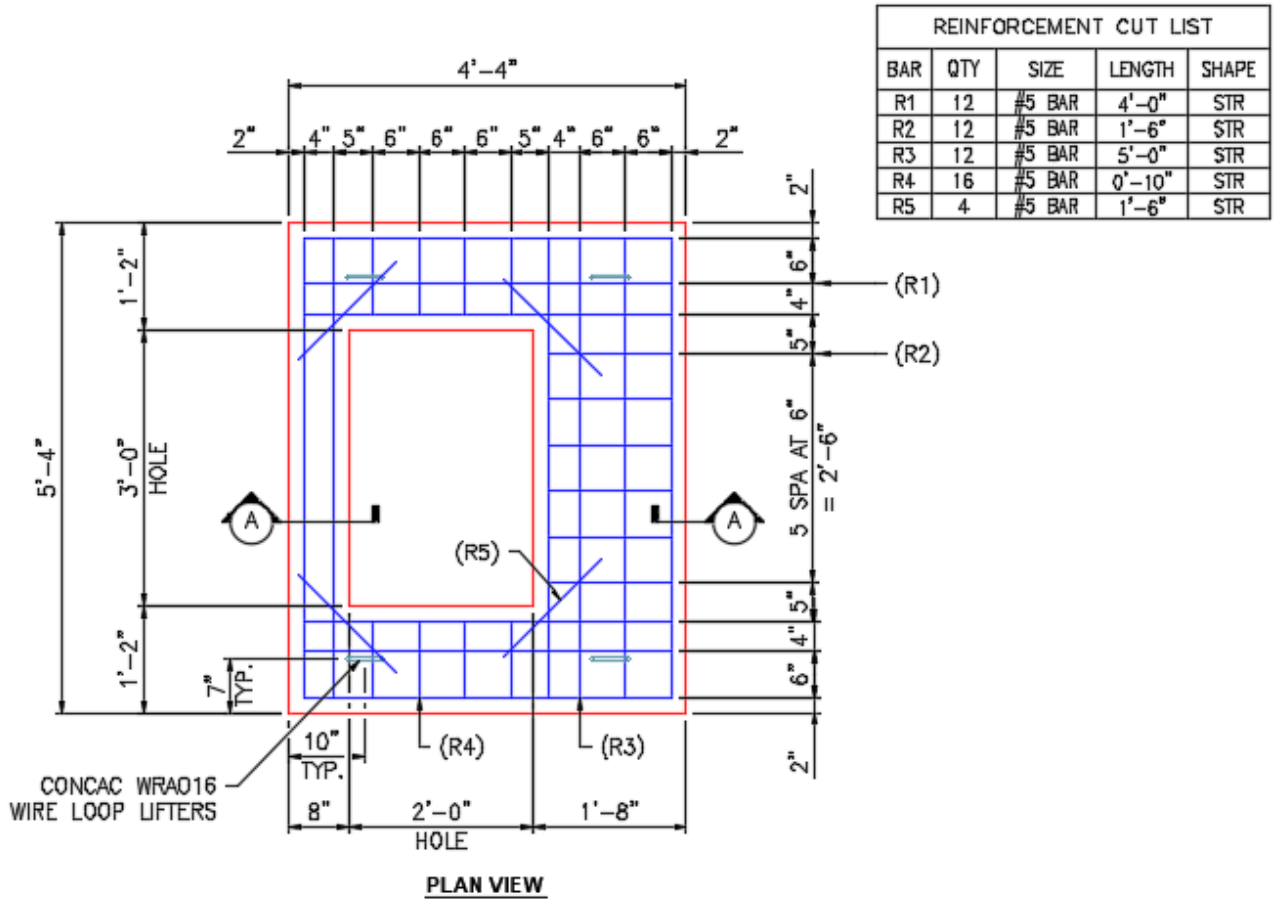
- 3400 lb
- 5270 lb
- 1837 lb
- 1654 lb
- 7051 lb
- 206 lb
- 0 lb
- 0 lb
- 0 lb

Structure Total: 19417 lb

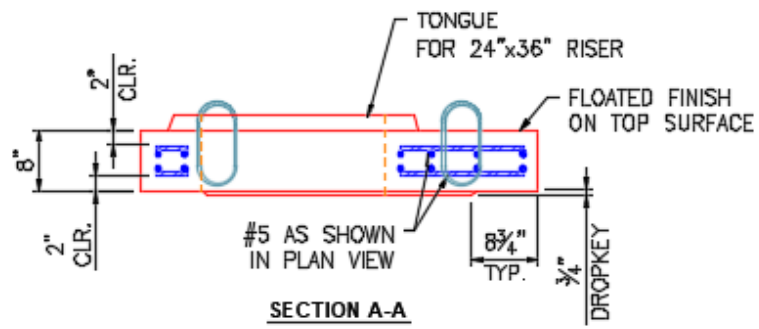
Structure Notes:

- \*\* KYTC STATE PROJECT \*\*
- 1. PER KYTC CBI TYPE A / ASTM C913 SPEC'S.
- 2. CONCRETE = 4,000 PI AT 28 DAYS.
- 3. NO INVERT CHANNEL.

- REINFORCING PER ASTM A615 (GRADE 60).
- TOP PHASE (As .62) #5 BARS AT 6" C.C.E.W.
  - TRANS. SLAB (As .62) #5 BARS AT 6" C.C.E.W (DBL MAT)
  - WALLS (As .31) #5 BARS AT 12" C.C.E.W.
  - FLOOR (As .31) #5 BARS AT 12" C.C.E.W.



REINFORCEMENT CUT LIST				
BAR	QTY	SIZE	LENGTH	SHAPE
R1	12	#5 BAR	4'-0"	STR
R2	12	#5 BAR	1'-6"	STR
R3	12	#5 BAR	5'-0"	STR
R4	16	#5 BAR	0'-10"	STR
R5	4	#5 BAR	1'-6"	STR



Coating (Int): Coating (Ext):	Seam Up: Tongue Seam Dn: Flat	Wall Thickness: 8"	Height (Ext): 8"	Weight (Net): 1654 lb Volume (Net): 0.42cu.yd
----------------------------------	----------------------------------	--------------------	------------------	--