

Job Name: 25-1511 Halfhill Estates Ph.3
 Job Location: Nicholasville, KY
 Contractor: Perdue Environmental Contracting Co., Inc.

Plant: Beaver Dam
 12/16/2025 4:37:01 PM

Tech: J. Horsley
 PC: J. Jarvis



Structure ID: CBI 1904

P2 BX036036-08TS024036

CB TRANSITION SLAB 24"X36" HOLE T/F

- P5) 24" x 120" - CB INLET KY A 10' TOP RIGHT F/G - 10"
- P4) 24" x 120" - CB INLET KY A 10' BOTTOM RIGHT T/G - 18"
- P3) 24" x 36" - BOX RISER 8inW, Variable Ht T/G - 15"
- P2) 36" x 36" - CB TRANSITION SLAB 24"X36" HOLE T/F - 8"
- P1) 36" x 36" - BOX BASE 8inW, 8inF F/n - 48"
- 1) CASTING - HOE KY-206 F/C (KY TY1)
- 1) 36" x 36" - Conseal CS-102 1.00"
- 2) 24" x 36" - Conseal CS-102 1.00"
- 2) Hole - 30
- 1) Hole - 24

3398 lb
 5270 lb
 1531 lb
 1235 lb
 6223 lb
 206 lb
 0 lb
 0 lb
 0 lb
 0 lb
 0 lb

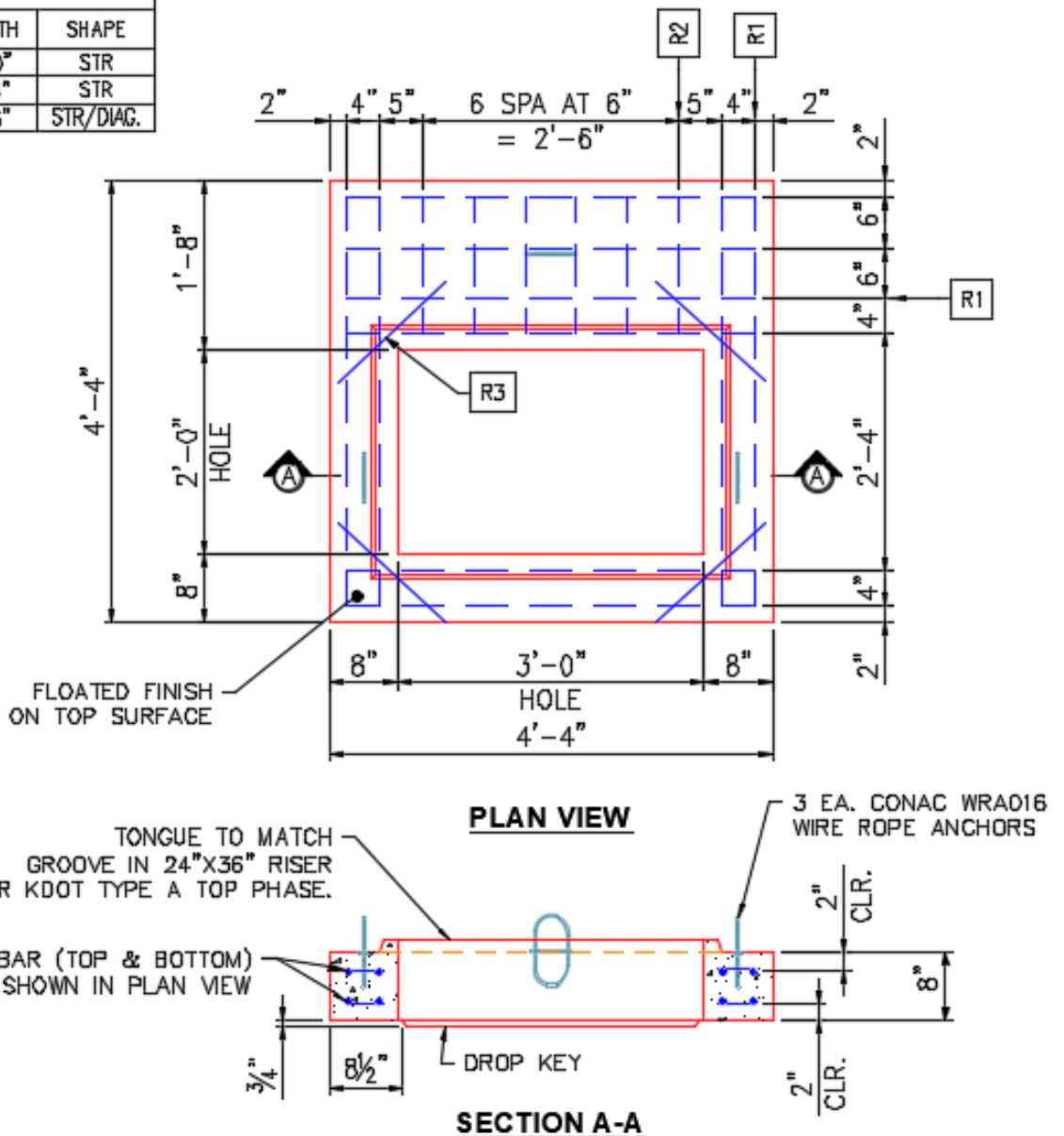
Structure Total: 17862 lb

Structure Notes:

- ** KYTC STATE PROJECT **
- 1. PER KYTC CBI TYPE A / ASTM C913 SPEC'S.
- 2. CONCRETE = 4,000 PI AT 28 DAYS.
- 3. NO INVERT CHANNEL.
- 4. CASTING BY ICAST (HOE KY-206 KY TY.1 F/C) CAST INTO TOP SLAB.

- REINFORCING PER ASTM A615 (GRADE 60).
- TOP PHASE (As .62) #5 BARS AT 6" C.C.E.W.
 - TRANS. SLAB (As .62) #5 BARS AT 6" C.C.E.W (DBL MAT)
 - WALLS (As .31) #5 BARS AT 12" C.C.E.W.
 - FLOOR (As .31) #5 BARS AT 12" C.C.E.W.

REINFORCEMENT CUT LIST				
BAR	QTY	MATERIAL	LENGTH	SHAPE
R1	20	#5 BAR	4'-0"	STR
R2	12	#5 BAR	1'-4"	STR
R3	4	#5 BAR	1'-6"	STR/DIAG.



Coating (Int):
 Coating (Ext):

Seam Up: Tongue
 Seam Dn: Flat

Wall Thickness: 8"

Height (Ext): 8"

Weight (Net): 1235 lb
 Volume (Net): 0.32cu.yd