

Job Name: 25-1511 Halfhill Estates Ph.3
 Job Location: Nicholasville, KY
 Contractor: Perdue Environmental Contracting Co., Inc.

Plant: Beaver Dam

Tech: J. Horsley

12/16/2025 4:37:00 PM

PC: J. Jarvis



Structure ID: CBI 1902

P2 BX060060-08TS024036

CB FT REDUCER 24"X36" HOLE T/F

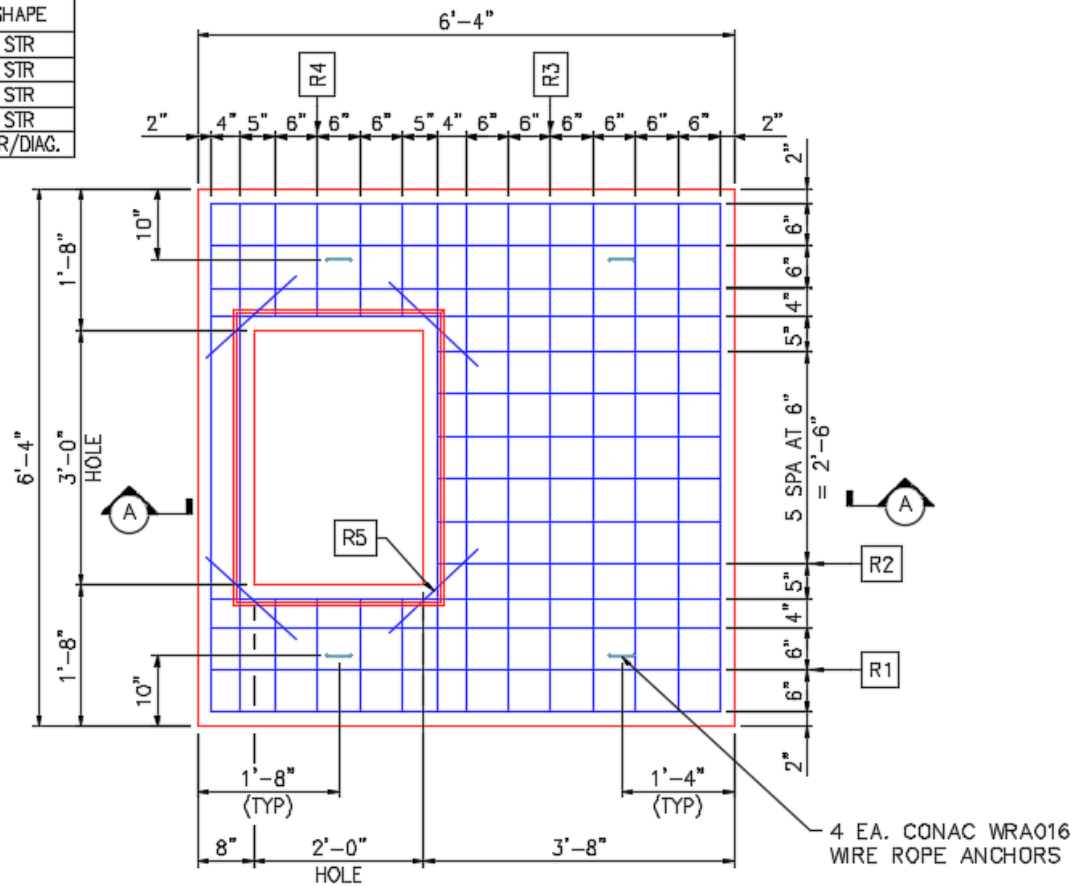
- P4) 24" x 120" - CB INLET KY A 10' TOP SAG F/G - 10"
- P3) 24" x 120" - CB INLET KY A 10' BOTTOM SAG T/G - 18"
- P2) 60" x 60" - CB FT REDUCER 24"X36" HOLE T/F - 8"
- P1) 60" x 60" - BOX BASE 8inW, 8inF, Variable Ht F/n - 51"
- 1) CASTING - HOE KY-206 F/C (KY TY1)
- 1) 60" x 60" - Conseal CS-102 1.00"
- 1) 24" x 36" - Conseal CS-102 1.00"
- 1) Hole - 44
- 1) Hole - 24
- 1) Hole - 38

- 3398 lb
- 5270 lb
- 3297 lb
- 10467 lb
- 206 lb
- 0 lb
- 0 lb
- 0 lb
- 0 lb
- 0 lb
-
- Structure Total: 22638 lb

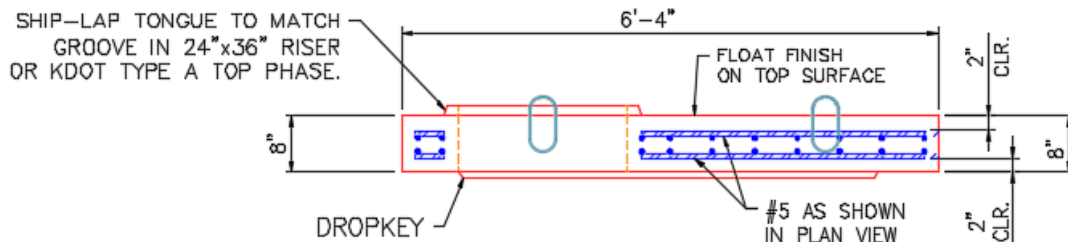
Structure Notes:
 ** KYTC STATE PROJECT **
 1. PER KYTC CBI TYPE A / ASTM C913 SPEC'S.
 2. CONCRETE = 4,000 PI AT 28 DAYS.
 3. NO INVERT CHANNEL.
 4. CASTING BY ICAST (HOE KY-206 KY TY.1 F/C)
 CAST INTO TOP SLAB.

 REINFORCING PER ASTM A615 (GRADE 60).
 - TOP PHASE (As .62) #5 BARS AT 6" C.C.E.W.
 - TRANS. SLAB (As .62) #5 BARS AT 6" C.C.E.W (DBL MAT)
 - WALLS (As .31) #5 BARS AT 12" C.C.E.W.
 - FLOOR (As .31) #5 BARS AT 12" C.C.E.W.

REINFORCEMENT CUT LIST				
BAR	QTY	MATERIAL	LENGTH	SHAPE
R1	16	#5 BAR	6'-0"	STR
R2	12	#5 BAR	3'-4"	STR
R3	20	#5 BAR	6'-0"	STR
R4	16	#5 BAR	1'-4"	STR
R5	4	#5 BAR	1'-6"	STR/DIAG.



PLAN VIEW



SECTION A-A

Coating (Int):
 Coating (Ext):

Seam Up: Tongue
 Seam Dn: Flat

Wall Thickness: 8"

Height (Ext): 8"

Weight (Net): 3297 lb
 Volume (Net): 0.84cu.yd