

Job Name: 25-1511 Halfhill Estates Ph.3
 Job Location: Nicholasville, KY
 Contractor: Perdue Environmental Contracting Co., Inc.

Plant: Beaver Dam

Tech: J. Horsley

12/16/2025 4:35:18 PM

PC: J. Jarvis



Structure ID: CBI 1902

P1 BX6060-08BAVF

BOX BASE 8inW, 8inF, Variable Ht F/n

- P4) 24" x 120" - CB INLET KY A 10' TOP SAG F/G - 10"
- P3) 24" x 120" - CB INLET KY A 10' BOTTOM SAG T/G - 18"
- P2) 60" x 60" - CB FT REDUCER 24"X36" HOLE T/F - 8"
- P1) 60" x 60" - BOX BASE 8inW, 8inF, Variable Ht F/n - 51"
- 1) CASTING - HOE KY-206 F/C (KY TY1)
- 1) 60" x 60" - Conseal CS-102 1.00"
- 1) 24" x 36" - Conseal CS-102 1.00"
- 1) Hole - 44
- 1) Hole - 24
- 1) Hole - 38

- 3398 lb
- 5270 lb
- 3297 lb
- 10467 lb
- 206 lb
- 0 lb
- 0 lb
- 0 lb
- 0 lb
- 0 lb
- 0 lb

Structure Notes:

- ** KYTC STATE PROJECT **
- 1. PER KYTC CBI TYPE A / ASTM C913 SPEC'S.
- 2. CONCRETE = 4,000 PI AT 28 DAYS.
- 3. NO INVERT CHANNEL.
- 4. CASTING BY ICAST (HOE KY-206 KY TY.1 F/C) CAST INTO TOP SLAB.

Structure Total: 22638 lb

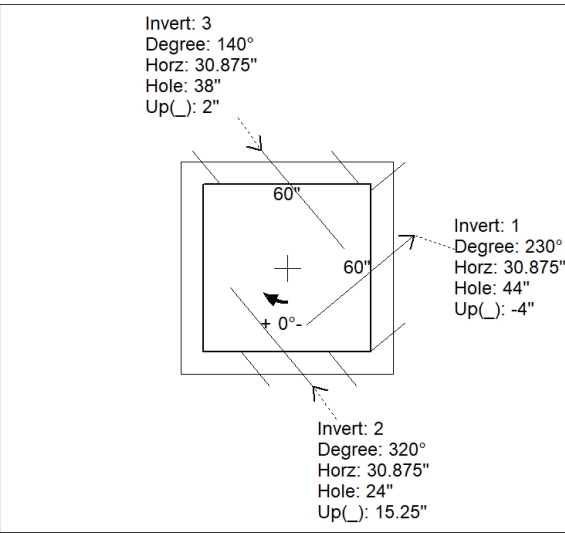
- REINFORCING PER ASTM A615 (GRADE 60).
- TOP PHASE (As .62) #5 BARS AT 6" C.C.E.W.
- TRANS. SLAB (As .62) #5 BARS AT 6" C.C.E.W (DBL MAT)
- WALLS (As .31) #5 BARS AT 12" C.C.E.W.
- FLOOR (As .31) #5 BARS AT 12" C.C.E.W.

Rim: 875.67' Rim to Invert: 7.24' Slack: -0.12" Sump: 0" Step Position:

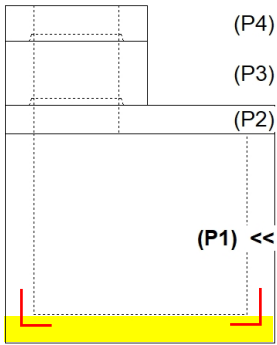
Position	Elev	Angle	Ext. (cw)	Pipe	Pipe OD	Connector	Hole	Horz Size	Up ()	Offset
Invert 1	868.43'	230°	32.25"	36" HDPE	41.7"	Hole 44	44"	57.438"	-4"	20"
Invert 2	869.95'	320°	32.25"	18" HDPE	21.2"	Hole 24	24"	31.33"	15.25"	20"
Invert 3	868.93'	140°	32.25"	30" HDPE	35.1"	Hole 38	38"	49.605"	2"	20"
Invert 4										
Invert 5										
Invert 6										
Invert 7										
Invert 8										

RIGHT-SIDE UP VIEW (int. dimensions)

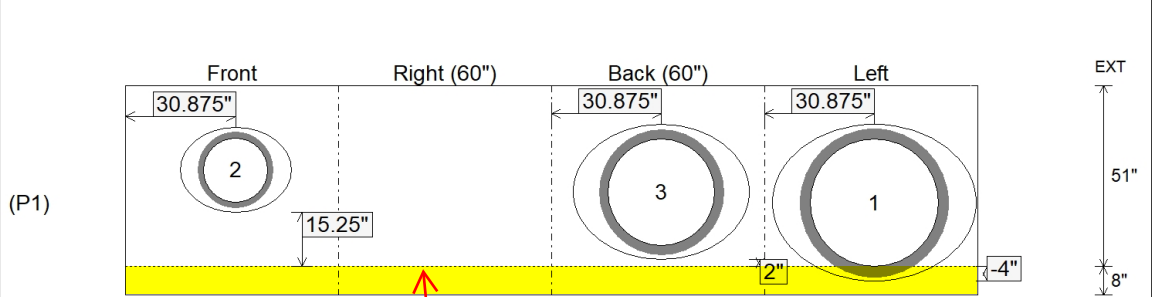
UPSIDE-DOWN VIEW (int. dimensions)



**1ST POUR (FLOOR) = 3,880 LBS
 2ND POUR (WALLS) = 6,587 LBS**



INSIDE WALL DIMENSIONS



**1ST POUR (FLOOR)
 STUB #5 L BARS OUT TOP
 OF FLOOR FOR
 CONNECTING WALLS**

**PLACE CONSEAL CS-231
 BETWEEN FLOOR & WALLS**

Coating (Int): Coating (Ext):	Seam Up: Flat Seam Dn: n/a	Wall Thickness: 8" Floor Height: 8"	Height (Int): 51" Height (Ext): 59"	Weight (Net): 10467 lb Volume (Net): 2.67cu.yd
----------------------------------	-------------------------------	--	--	---

Job Name: 25-1511 Halfhill Estates Ph.3
 Job Location: Nicholasville, KY
 Contractor: Perdue Environmental Contracting Co., Inc.

Plant: Beaver Dam
 12/16/2025 4:35:18 PM

Tech: J. Horsley
 PC: J. Jarvis



Structure ID: CBI 1902

P1A BX6060-08BAVF

BOX BASE 8inW, 8inF, Variable Ht F/n

- P4) 24" x 120" - CB INLET KY A 10' TOP SAG F/G - 10"
- P3) 24" x 120" - CB INLET KY A 10' BOTTOM SAG T/G - 18"
- P2) 60" x 60" - CB FT REDUCER 24"X36" HOLE T/F - 8"
- P1) 60" x 60" - BOX BASE 8inW, 8inF, Variable Ht F/n - 51"
- 1) CASTING - HOE KY-206 F/C (KY TY1)
- 1) 60" x 60" - Conseal CS-102 1.00"
- 1) 24" x 36" - Conseal CS-102 1.00"
- 1) Hole - 44
- 1) Hole - 24
- 1) Hole - 38

3398 lb
 5270 lb
 3297 lb
 10467 lb
 206 lb
 0 lb
 0 lb
 0 lb
 0 lb
 0 lb
 0 lb
 Structure Total: 22638 lb

Structure Notes:
 ** KYTC STATE PROJECT **
 1. PER KYTC CBI TYPE A / ASTM C913 SPEC'S.
 2. CONCRETE = 4,000 PI AT 28 DAYS.
 3. NO INVERT CHANNEL.
 4. CASTING BY ICAST (HOE KY-206 KY TY.1 F/C)
 CAST INTO TOP SLAB.

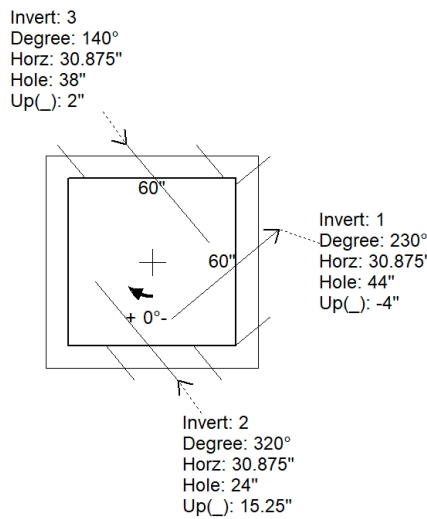
REINFORCING PER ASTM A615 (GRADE 60).
 - TOP PHASE (As .62) #5 BARS AT 6" C.C.E.W.
 - TRANS. SLAB (As .62) #5 BARS AT 6" C.C.E.W (DBL MAT)
 - WALLS (As .31) #5 BARS AT 12" C.C.E.W.
 - FLOOR (As .31) #5 BARS AT 12" C.C.E.W.

Rim: 875.67' Rim to Invert: 7.24' Slack: -0.12" Sump: 0" Step Position:

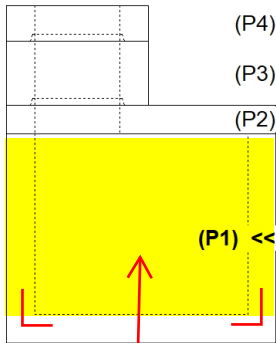
Position	Elev	Angle	Ext. (cw)	Pipe	Pipe OD	Connector	Hole	Horz Size	Up ()	Offset
Invert 1	868.43'	230°	32.25"	36" HDPE	41.7"	Hole 44	44"	57.438"	-4"	20"
Invert 2	869.95'	320°	32.25"	18" HDPE	21.2"	Hole 24	24"	31.33"	15.25"	20"
Invert 3	868.93'	140°	32.25"	30" HDPE	35.1"	Hole 38	38"	49.605"	2"	20"
Invert 4										
Invert 5										
Invert 6										
Invert 7										
Invert 8										

RIGHT-SIDE UP VIEW (int. dimensions)

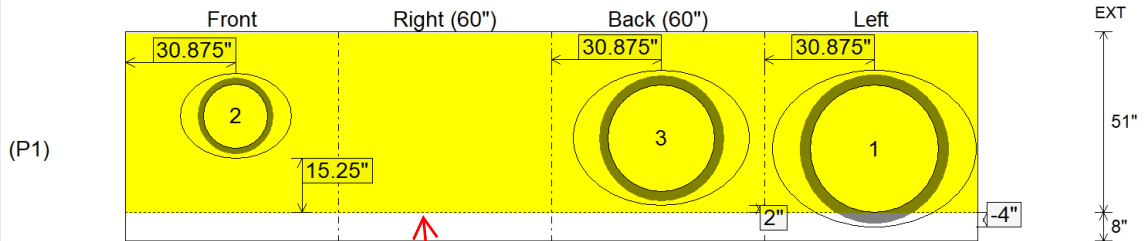
UPSIDE-DOWN VIEW (int. dimensions)



**1ST POUR (FLOOR) = 3,880 LBS
 2ND POUR (WALLS) = 6,587 LBS**



INSIDE WALL DIMENSIONS



**PLACE CONSEAL CS-231
 BETWEEN FLOOR & WALLS**

Coating (Int): Coating (Ext):	Seam Up: Flat Seam Dn: n/a	Wall Thickness: 8" Floor Height: 8"	Height (Int): 51" Height (Ext): 59"	Weight (Net): 10467 lb Volume (Net): 2.67cu.yd
----------------------------------	-------------------------------	--	--	---