

Job Name: 25-1431 - Georgetown Commons
 Job Location: Georgetown, KY
 Contractor: Winwater Hartford KY Co.

Plant: Beaver Dam

Tech: J. Copping

4/23/2026 11:30:52 AM

PC: A. Chambers



Structure ID: YD 210

P2 MH072LD15-24SQ

MH FLAT TOP w/24"x24" Hole

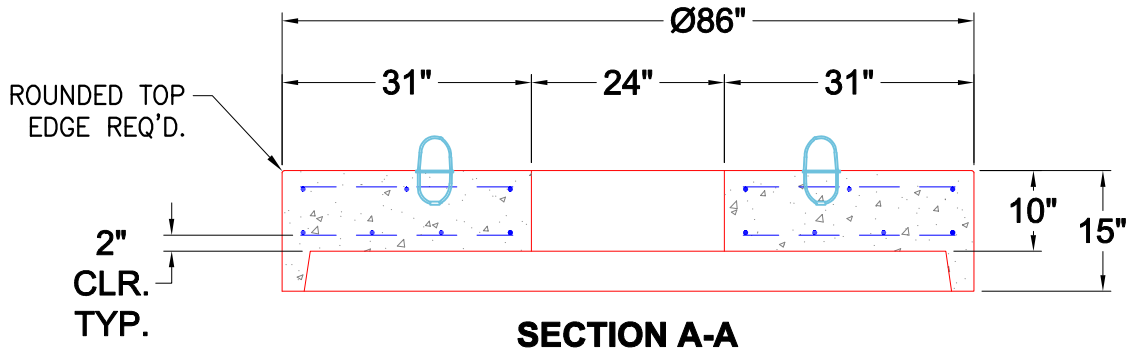
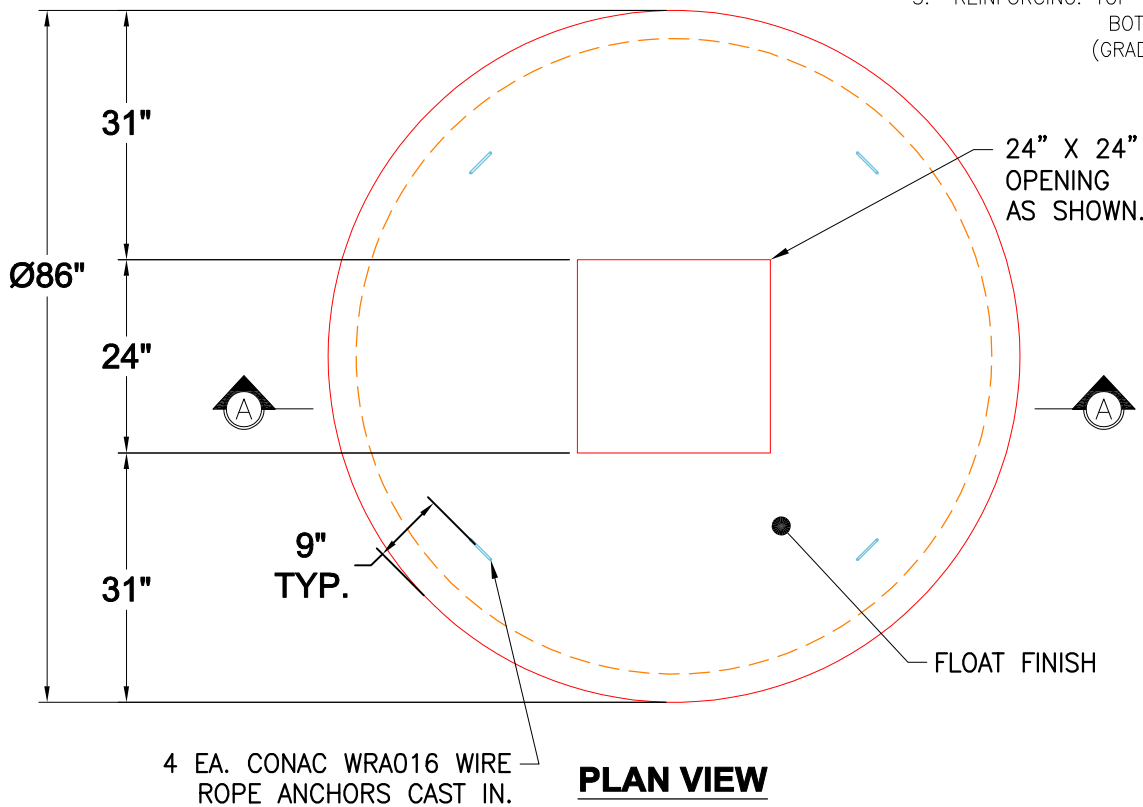
- P3) 24" x 24" - CASTING HEIGHT - 4"
- P2) 72" - MH FLAT TOP w/24"x24" Hole - 15"
- P1) 72" - MH BASE Custom Ht - 65"
- 1) CASTING - HOE 280T F/G
- 1) 72" - Conseal CS-102 1.00"
- 1) 24" x 24" - Conseal CS-102 1.00"
- 1) Hole - 56
- 5) MH Step ML-10-TDS-NCR - 10"

0 lb	Structure Notes:
4772 lb	1. JR HOE HOE-280T PROVIDED BY ICAST.
11759 lb	2. PER ASTM C478 SPECIFICATIONS.
182 lb	3. CONCRETE = 4,000 PSI AT 28 DAYS.
0 lb	4. REINFORCING PER ASTM A615 (GRADE 60).
0 lb	- TOP SLAB (As .62) #5 BARS AT 6" C.C.E.W..
0 lb	- RISER/WALLS (As .12)
0 lb	- FLOOR (As .31) #5 BARS AT 12" C.C.E.W.

Structure Total:	16713 lb

GENERAL NOTES:

1. MANUFACTURED TO ASTM C-478 (LATEST REVISION).
2. CONCRETE 4,000 PSI AT 28 DAYS.
3. REINFORCING: TOP MAT #4 @ 18" O.C. E.W.
 BOTTOM MAT #4 @ 9" O.C. E.W.
 (GRADE 60)



Coating (Int): Coating (Ext):	Seam Up: Flat Seam Dn: Groove	Wall Thickness: 7"	Height (Ext): 15"	Weight (Net): 4772 lb Volume (Net): 1.22cu.yd
----------------------------------	----------------------------------	--------------------	-------------------	--